

SEA Semester



Following SEA

2013-2014 Annual Report Issue, Winter/Spring 2015

SEA Semester Goes Global

ON THE COVER: Summer Session Historic Seaports of Western Europe students in Lisbon pose in front of a monument called 'Padrao dos Descobrimenetos', inaugurated in 1960 during the Salazar regime.

PICTURED: The first SEA Semester: The Global Ocean class in Barcelona, October 2014.



CONTENTS

COVER STORY SEA Semester Goes Global..... 1-3

SPECIAL New study on plastics in the ocean in the journal *Science* 4-5

IN EVERY ISSUE **PASSAGES** - Events and news of general interest17
SCIENCE CORNER - Shipboard Science 18-19
CURRENTS - Rick Murray, W-71..... 21

ANNUAL REPORT **2013-2014 Report to Donors** From Board Chair Susan E. Humphris..... 6
Annual Report..... 6-16


FOLLOWING SEA is available online. If you'd like your prints, slides, or digital images considered for the next issue contact: Kerry Sullivan, ext. 520 or ksullivan@sea.edu

Sea Education Association, Inc.
 PO Box 6, Woods Hole, Massachusetts 02543
 Phone 800-552-3633 Fax 508-457-4673 www.sea.edu

Recycled Chlorine-Free Paper / Vegetable based Ink

FOLLOWING SEA Winter/Spring 2015
Editor: Jan Wagner
Design: MBDDesign, mb.design@comcast.net
Photography: Cover-Daniel Brayton; Mary Malloy, Jan Wagner, and SEA Student Photographers





With generous support from so many in the SEA community who made donations to the New Directions campaign, three *SEA Semester: The Global Ocean (GO)* voyages were planned and offered during the 2014-2015 academic year. The first GO, C-255, took place in Spain during fall 2014 and the second, S-256, took place in New Zealand, also in the fall. These accounts were written on the SSV *Robert C. Seamans* by the GO faculty while in New Zealand waters during S-257, SEA's third GO voyage.

SEA Semester Goes Global

Mary Malloy, Ph.D.
Professor of Maritime Studies
Director of the Global Ocean program

The *Robert C. Seamans* has just left the Bay of Islands, New Zealand—a destination I had long wished to visit—and the reality of the place far exceeded even my most exuberant expectations. We followed in the wake of the *Endeavor*, the *Beagle*, and the *Charles W. Morgan*, to a place visited by more than a thousand Massachusetts whaleships in the nineteenth century. The locals were pleased to see a vessel with a home port from our state on the stern after an absence of many decades.

Chuck Lea, Elliot Rapport and I taught the core courses in the first GO offering in Spain last fall with class C-255, and worked with Erin Bryant and Skye Morét both then and now in filling out the faculty roster. Students taking The Global Ocean are required to take three core courses, *Maritime History and Culture*, *Oceans and Global Change*, and *Leadership in a Dynamic Environment* and may also choose two electives from a choice of five.

One of the goals of GO was to create a “Learning Community” of students looking at a big topic from multiple disciplinary perspectives across several courses, and I feel that we have achieved this. (The Association of American Colleges and Universities has identified this process as one of the essential learning outcomes of a Liberal Arts education.) Our intellectual framework for the GO program uses the ten metrics of the Ocean Health Index (OHI), and these have worked well for us in running the same program in places as different as Spain and New Zealand. They are designed to provide a way of measuring human impacts on coastal and marine environments and are nicely interdisciplinary, which was important to us in designing this program.

We've been close to full enrollment in all three of our GO classes this year with students reporting that a choice of elective offerings and new destinations was what attracted them to SEA Semester: The Global Ocean. We look forward to offering three more GO programs in academic year 2015-2016.

Professor Malloy writes
 “Two of our new courses have replaced longstanding staples of the SEA curriculum. *Leadership in a Dynamic Environment* replaces *Nautical Science*; and *The Ocean and Global Change* has replaced *Introduction to Oceanography*. These are best described by the people who teach them and I am grateful to my colleagues Elliot and Chuck for contributing the following.”
 (see sidebars)

Leadership in a Dynamic Environment
Captain Elliot Rappaport, W-79

The best leaders engage a flexible approach to solving problems. Complex tasks require good planning in advance, and enough talent and communication to make effective adjustments as things change along the way. The SEA ships have always been a sailing laboratory for such leadership, and with the advent of the Global Ocean curriculum, a formal syllabus now offers credit directly for the time that students spend standing watch, learning to work and manage the ship.

Leadership in a Dynamic Environment (LDE) begins ashore with a seminar on the modern academic language of leadership and management. Students learn about how effective teams are built and led. Case studies are used to examine how human actions affect results, and to demonstrate how plans can be developed around desired outcomes. A special emphasis is placed on Bridge Resource Management (BRM), a set of guiding principles developed over the last 20 years to improve the performance of navigational crews in the maritime industry.

On the ship, students are immediately faced with the challenge of forming a functional crew. They are given progressive responsibility for tasks with real consequences and gain alternating experience in supporting and leadership roles. Eventually, all will take turns in the executive role of Student Watch Officer, reporting directly to the captain and chief scientist. Throughout, the professional crew serve as mentors, role models, and facilitators. This process is not new to SEA Semester, but its built-in requirements for effective teamwork make it the ideal field element for the LDE curriculum.



US Ambassador to Spain, James Costos, visits the SSV Corwith Cramer in Barcelona and declares the students to be “Junior Ambassadors.”

SEA Semester Goes Global

Feb 26 Eat, Sleep, Sail
 Hayden Harding, C Watch, Bryant University



One month ago we were confined to our cottages in Woods Hole waiting out a blizzard that put New England under a record amount of snow. Fast forward to yesterday evening and we were getting ready, yet again, for a different kind of weather event. Forecasts told of an approaching cold front with strong southerly winds to follow. The evening started quietly, as the setting sun filled the cloud-spotted sky with colors of orange, and Lauren, our multi-talented steward, played her musical stylings on a violin.



Container library in Auckland, New Zealand.

Blog entries are posted online every workday to chronicle the voyages. See www.sea.edu/sea_currents



Marae at Waitangi, New Zealand.



The Global Ocean students present their projects on the quarterdeck for the course The Ocean and Global Change onboard the SSV Corwith Cramer, November 2014.



Global Ocean (GO) Voyages A Pictorial Essay

The SSV Corwith Cramer passes 'Ireland's Teardrop' – the Fastnet Rock and Lighthouse near Cork, Ireland after a transatlantic voyage from Woods Hole.



Oceanography in The Global Ocean Chuck Lea, Ph.D.

The behavior of the oceans in a world of change is a central feature in understanding of our planet and its future. This fact is at the core of Oceanography in the Global Ocean curriculum where one course looks at the changing nature of the vast marine world in the 21st century. *The Ocean and Global Change* course moves from information concerning the physical, chemical and biological operations of the oceans and atmosphere to student-led presentations focusing on specific challenges resulting from climate change, fishing, and pollution. Can the oceans continue to provide important amounts of human food while not changing marine ecosystems beyond recovery? Will humans manage their by-products without poisoning the air and sea and creating environments where only bacteria live?

At sea, students taking *Directed or Practical Oceanographic Research* pursue the data for projects proposed onshore, while all stand a lab watch to develop an understanding of the information gathered underway. These data are applied to the categories of the Ocean Health Index and serve as a basis of comparison across different locations and time. The amount of plastic we collect with our nets informs the Pollution Index, while Carbon Sequestration can be indicated by the amount of plankton we collect. Research students can lead the way providing context and analysis to a broad range of ocean questions. Indeed the behavior of humans and the behavior of the oceans are now linked in a way that requires interdisciplinary study.

Breaking News:

New study in *Science* calculates amount of plastic waste going into the ocean

The Annual Meeting of the American Association for the Advancement of Science (AAAS) was held on February 11, 2015 in San Jose, California. At the invitation of AAAS, a new study published in the prestigious journal, *Science*, was presented as the first press event of the day.

Kara Lavender Law, co-author of the study, spoke to the press about the research. “With our students I have sailed and sampled both the Atlantic and Pacific Oceans for plastic debris, and for the past 8 years I have been actively researching the sources, distribution, and fate of plastic in the ocean.

Why do we care how much plastic is in the ocean? While I would argue that any plastic in the ocean is too much plastic, we ultimately want to know how this contaminant is affecting the ocean, and marine life, in particular—not only sea turtles, whales and seabirds, but also animals at the base of the food web all the way up to what we call seafood.”

Millions of tiny bits of plastic swirl around the ocean, carried far offshore by ocean currents and with few clues about their origin. It has long been suspected that much of this plastic started out as trash on land, but exactly how much un-captured plastic waste is making its way from land to ocean has been a decades-long guessing game. Now, a team of researchers working at the National Center for Ecological Analysis and Synthesis (NCEAS) at University of California-Santa Barbara has put a number on the global problem.

The study, co-authored by Kara Lavender Law, principal investigator of the NCEAS marine debris working group, reported in the Feb. 13 edition of the journal *Science*, found between 4.8 and 12.7 million metric tons of plastic entered the ocean in 2010 from people living within 50 kilometers of the coastline. That year, a total of 275 million metric tons of plastic waste was generated in those 192 coastal countries.

Jenna Jambeck, an assistant professor of environmental engineering at University of Georgia and the study’s lead author, explains the amount of plastic moving from land to ocean each year using 8 million metric tons as the midpoint: “Eight million

metric tons is the equivalent to finding five grocery bags full of plastic on every foot of coastline in the 192 countries we examined.”

Law, a research professor at SEA explains that, “Until now, we have been estimating the amount of plastic pollution in the ocean by taking a ship far offshore, towing a plankton net, and counting each individual piece of plastic collected. This is a very tedious and expensive task.” Now, researchers have taken a different approach and instead estimated the amount of plastic waste entering the ocean.

To determine the amount of plastic going into the ocean, Jambeck “started it off beautifully with a very grand model of all sources of marine debris,” said study co-author Roland Geyer, an associate professor with the University of California-Santa Barbara’s Bren School of Environmental Science and Management, who teamed with Jambeck and others to develop the estimates.

They began by looking at all debris entering the ocean from land, sea and other pathways. Their goal was to develop models for each of these sources. After gathering rough estimates, “it fairly quickly emerged that the mismanaged waste and solid waste dispersed was the biggest contributor of all of them,” he said. From there, they focused on plastic.

Plastic pollution in the ocean was first reported in the scientific literature in the early 1970s. In the 40 years since, there have been an increasing number of reports of plastic debris found everywhere from beaches to deep-sea sediments and in Arctic sea ice. But until this study, there were no rigorous estimates of the amount and origin of plastic debris making its way into the marine environment from land.

But knowing how much plastic is going into the ocean is just one part of the puzzle. With between 4.8 and 12.7 million metric tons going in, researchers like Law are only finding between 6,350 and 245,000 metric tons floating on the ocean’s surface.

“This work gives us a sense of just how much we’re missing,” Law said, “how much we need to find in the ocean to add up to the total. There is a lot of plastic sitting on the bottom of the ocean and on beaches worldwide. Right now, we’re mainly measuring plastic that floats, and only in relatively few locations.”

SEA scientists and undergraduate students in the SEA Semester program continue to add to long-term data sets of floating plastic debris in both the Atlantic and Pacific Oceans. “The several thousand SEA Semester students who have collected and counted plastic debris since the 1980s have been essential contributors to our understanding of the scale and scope of this pollution problem,” said SEA president Peg Brandon. “Not only are students sailing to regions never before sampled for plastic debris on our newly expanded trans-Atlantic and South Pacific cruise tracks, but they are gaining a first-hand understanding of the human impact on the oceans.”

Jambeck forecasts that the cumulative input of plastic waste to the oceans will equal 155 million metric tons by 2025. The planet is not predicted to reach global “peak waste” before 2100, according to World Bank calculations.

“We’re being overwhelmed by our waste,” she said. “But our framework allows us to also examine mitigation strategies like improving global solid waste management and reducing plastic in the waste stream. Potential solutions will need to coordinate local and global efforts.” ■

Plastic debris on a beach in Haiti.

Photo/Timothy Townsend



Law describes the implications of this new study.

The calculations are sobering. Having sailed in the Atlantic and Pacific where floating microplastics accumulate and observing the problem first-hand, I knew the number had to be big. But the magnitude is hard to fathom. Our low-end estimate is equivalent to the amount of tuna fished from the ocean in a year. We are taking out tuna, and putting in plastic.

Thus, the discrepancy between what we know is entering the ocean and what we can account for from ocean measurements is huge. Our input estimate is robust, so the question becomes, where is all the plastic going?

We know that not all plastic floats, so certainly some amount of the missing plastic is suspended in the water column, or sitting on the seafloor. Plastic is also found on beaches worldwide in forms ranging from massive derelict items, such as the docks that appeared on the U.S. Pacific coast after the 2011 Japanese tsunami, to lost fishing buoys and nets, to everyday items including cigarette filters, bottles, and food packaging. And microplastics, smaller than your pinky fingernail and potentially microscopic, are found in all these places where marine animals, ranging from marine worms and barnacles to seabirds and whales, are eating them.

We don't yet have a grasp of how much of the "missing plastic" is in each of these marine reservoirs—deep sea, shorelines, and biota. Why does it matter? We need to know

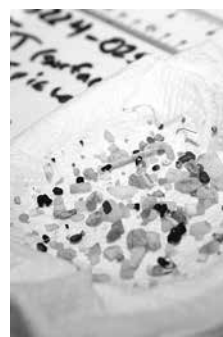
where it is because animals have to first encounter plastic in order to be put at risk.

While plastic may have a variety of harmful effects, ingestion is probably of highest concern. We know that eating plastic can be harmful—it can cause injury and contribute to starvation. Think, for example, of the shocking photos of dead albatross chicks stuffed full of plastic. We also know that plastics are manufactured with a wide variety of additives, some of which may be toxic, and that plastics also act as sponges for persistent toxins already present in seawater, such as DDT and PCBs. In the laboratory it has been shown that these toxins can transfer into animal tissue after plastic has been eaten, although we do not yet know how much of a risk this poses to animals in the ocean. This is an active area of research because there is rising concern about the potentially harmful effects of microplastics to marine animals, as well as to food safety and human health.

In short, if we want to understand the risks to marine animals, and humans through seafood, we need to first get a handle on how much plastic there is, what form it takes, and where it is in the ocean, so that we can evaluate the quantity of plastics exposure to a particular animal or species. If there is no exposure, there is no risk. This study shows that there is far more plastic in the ocean than we can currently account for. Now we have to find it. ■



SEA Research Professor of Oceanography Kara Lavender Law co-authored the study revealing that 8 million metric tons of plastic enter the oceans per year.



Microplastics sample collected onboard the SSV Robert C. Seamans using a surface plankton net towed in the North Pacific Ocean. Photo/SEA, G. Proskurowski

The 192 countries with a coast bordering the Atlantic, Pacific, and Indian oceans, Mediterranean and Black seas produced a total of 2.5 billion metric tons of solid waste. Of that, 275 million metric tons was plastic, and an estimated 8 million metric tons of mismanaged plastic waste entered the ocean in 2010. Graphic/Lindsay Robinson/UGA

Jambeck, J. R., R. Geyer, C. Wilcox, T. R. Siegler, M. Perryman, A. Andrady, R. Narayan and K. L. Law, 2015. Plastic waste inputs from land into the ocean. Science 347, 768-771. doi:10.1126/science.1260352.



2013-2014 ANNUAL REPORT



Susan E. Humphris, Chair
Board of Trustees, March 2015

Over the last year, I have been privileged to watch a sea change at SEA as it has become more global in its reach. Through the considerable talent and hard work of SEA's faculty and staff, new programs have been implemented and new ports have been explored, putting SEA on a new course for the future.

SEA's newest semester program, The Global Ocean, has now been offered three times, and its focus on coastal landscapes and marine environments has proven adaptable whether in Spain or New Zealand. With its three core courses and a choice of electives, it is proving popular with students even though the logistics of multiple offerings are complex. Early feedback from faculty, students, alumni, parents and sending institutions has been excellent, and the program was recently recognized by Tall Ships America as the 2014 Sea Education Program of the Year—a significant honor!

This summer, we can look forward to other exciting programs. The SSV *Corwith Cramer* will make a 4-week Transatlantic Crossing, and then will offer the Historic Seaports of Western Europe program. The SSV *Robert C. Seamans* will be in Hawaii for the Aloha 'Aina: People and Nature in the Hawaiian Islands program and will then head to the Phoenix Islands for the Protecting the Phoenix Islands (PIPA) program. If you know of a student who might be looking for a summer program, please send them our way!

The portfolio of programs that SEA now offers and the range of courses available to students all revolve around the relationship between humans and the oceans. While educating students so they can make informed decisions to ensure a sustainable future, SEA also contributes scientifically to our knowledge of the oceans. In February, a paper in the journal *Science* co-authored by Kara Lavender Law found between 4.8 and 12.7 million metric tons of plastic entered the ocean in 2010 from people living within 50 kilometers of the coastline. By collecting data to address human impacts on the environment, SEA is fostering responsible stewardship of the oceans.

Of fundamental importance to SEA's success is its ability to offer college credits. I am delighted to report that we have signed a new affiliation agreement with Boston University, which has been our school of record since 1974. The agreement runs through August 2018 and includes recognizing SEA Semester as an official BU study abroad program for the first time.

Of course, none of this would have been possible without the generous support of all who have contributed to SEA over the last year. In particular, I know many of you reached out with additional gifts to the New Directions campaign that supported the planning and preparation necessary to implement The Global Ocean and other new programs and to send our ships to new destinations in the Pacific and Atlantic Oceans. Your continuing support is critical to enabling SEA to offer the best undergraduate ocean-based programs—thank you for all that you do for SEA.

2014-2015 Officers, Trustees, and Overseers

Officers

Susan Humphris, Chair
Richard Burnes, Vice Chair
Levin Campbell, W-60, Vice Chair
Linda Cox Maguire, Vice Chair
Robert Knapp, W-99, Treasurer
Richard Chandler, W-7, Clerk
Margaret Brandon, W-48
ex-officio

Trustees

Ronald Baird
Jacob Brown
Walter Brown
Scott Doney, W-76
Peter Ellis
Lauren Gilbert, S-190
Richard Hawkins
Jerome Heller
Jian Lin
Bartlett McGuire
Philip McKnight
Jessica McWade
Lauren Morgens, C-158
Christopher Penn, W-6

Kenneth Potter, W-43
Anthony Whittemore
John Wigglesworth, W-5
Richard Wilson

Trustees Emeriti

Margaret Clowes
James Humphreys
John Kingsbury
Paul Perkins
Thomas Weschler
Peter Willauer

Presidents Emeriti

John Bullard
Rafe Parker

Overseers

Katrina Abbott
Richard Armstrong, W-13
Douglas Atkins
Susan Avery
Cynthia Badan, W-95
Paul Berkner, W-52
W. Jeffrey Bolster
Amy Bower, W-47
Emily Bramhall, W-27

David Brown
Jane Brown
John Cahill, W-98
James Clark
Thomas B. Clark, W-26
Sarah Clowes, W-145A
Ellen Cost
Richard Cost
William Cramer
John Damon
Sarah Das, W-129
Jamie Deming, W-14
William Dennison, W-33
William Duggan, W-35
Sylvia Earle
Stephen Fantone
Susan Farady, W-83
John Farrington
Robert Foulke
Lloyd French, W-130
Robert Gagorian
John Gerngross, W-20
Craig Gibson
Robert Giegengack
Douglas Goldhirsch, W-48
Sarah Gould, W-66
Samuel Gray
Benjamin Gutierrez

Gwendolyn Hancock, C-166
David Higgins
Todd Hiller
Charles Holloway, W-58
Meghann Horner-Smith, C-163
Michael Hudner
Gordon Hughes
David Jackson
Ambrose Jearld
Robert Johnson
Royal Joslin
Morris Kellogg
Patricia Keoughan, W-53
Stephen Laster, W-83
Kenneth Legg
Clifford Low, W-22
Ivan Luke
Katherine Lund, C-121
Martin Madden
Edward Madeira
Caleb McClennan, W-144
Jim Millinger
Walter Mitchell, W-16
Sarah Murdock, W-66
Elizabeth Nicholson
Dennis Nixon
Leonard Pace, W-178
Leroy Parker

Margaret Parker
Cheryl Peach
John Phillips
William Pinkney
George Putnam
Robert Quinlan
Christopher Reddy
Dwight Reese, W-41
Ralph Richardson
Hal Rose, W-38
Andrew Rosenberg, W-7
Paul Rosenzweig, W-43
Carl Safina
Robert Seamans
Carolyn Sheild, W-77
Rebecca Sparkes, C-183
Michael Taylor
Walter Thompson
Ashley Tobin
Deborah Warner
Henley Webb
Charles Willauer, W-40
Gale Willauer, W-30
Eric Wolman
George Woodwell
G. Stewart Young

On the following pages, **bold** type indicates donors who have contributed for at least 10 consecutive years. † Indicates donors who have contributed for at least 5 consecutive years.

We gratefully acknowledge the many alumni, parents, faculty, staff and friends who generously contributed their money, time and effort to Sea Education Association during the 2013-2014 fiscal year. Every effort has been made to list all contributions accurately from **July 1, 2013** through **June 30, 2014**. If, however, an error has been made, please accept our apologies and notify us.

Trustee and Overseer Donors to the Annual Fund 2013-2014

Trustees

Ronald Baird †
Margaret Brandon, W-48 †
Jacob Brown
Walter Brown
Richard Burnes
Levin Campbell, W-60
Richard Chandler, W-7
Scott Doney, W-76 †
Peter Ellis
Richard Hawkins

Susan Humphris

Jian Lin †
Linda Cox Maguire
Bartlett McGuire †
Philip McKnight
Lauren Morgens, C-158 †
Richard Murray, W-71
Christopher Penn, W-6
Kenneth Potter, W-43
Richard Wilson

Overseers

Katrina Abbott †
Richard Armstrong, W-13
Susan Avery †
Cynthia Badan, W-95
Paul Berkner, W-52
W. Jeffrey Bolster
Amy Bower, W-47 †
Emily Bramhall, W-27
David Brown †
John Cahill, W-98
James Clark
Thomas B. Clark, W-26
Sarah Clowes, W-145A †
William Cramer †
John Damon †
Sarah Das, W-129
Jamie Deming, W-14
William Duggan, W-35
Sylvia Earle
Susan Farady, W-83
John Farrington
Robert Foulke
Robert Gagosian
Robert Giegengack †
John Gerngross, W-20
Lauren Gilbert, S-190

Robert Giegengack †
Douglas Goldhirsch, W-48
Sarah Gould, W-66
Samuel Gray
Benjamin Gutierrez
Gwendolyn Hancock, C-166 †
Jerome Heller †
David Higgins
Charles Holloway, W-58 †
Meghann Horner-Smith, C-163
Gordon Hughes
David Jackson
Ambrose Jearld
Robert Johnson †
Royal Joslin †
Morris Kellogg
Patricia Keoughan, W-53
Robert Knapp, W-99
Clifford Low, W-22
Katherine Lund, C-121 †
Edward Madeira †
Timothy Mahoney
Jessica McWade †
Jim Millinger
Walter Mitchell, W-16 †
Sarah Murdock, W-66
Dennis Nixon

Leroy Parker
Margaret Parker
Cheryl Peach
John Phillips
George Putnam
Robert Quinlan
Christopher Reddy †
Dwight Reese, W-41
Howard Ris †
Hal Rose, W-38 †
Andrew Rosenberg, W-7 †
Paul Rosenzweig, W-43
Carl Safina
Robert Seamans †
Carolyn Sheild, W-77
Rebecca Sparkes, C-183 †
Michael Taylor
Walter Thompson
Ashley Tobin †
Deborah Warner
Anthony Whittemore
John Wigglesworth, W-5
Gale Willauer, W-30
Eric Wolman
George Woodwell
G. Stewart Young

Trustee Emeriti

John Kingsbury
Paul Perkins
Thomas Weschler
Peter Willauer

Presidents Emeriti

John Bullard
Rafe Parker

Anchor Watch

Established in 1991, the Anchor Watch society honors those who provide gifts to Sea Education Association through their estates or life-income plans. We are pleased to recognize these special donors during their lifetime and to celebrate the important role that the Anchor Watch society has in the future of SEA.

Jacob and Barbara Brown
Richard Burnes
Thomas B. Clark, W-26
Norris Claytor
John Damon
E. Peter Elsaesser
Edwin Fischer
Samuel Gray

Grace Hinkley
Patricia Keoughan, W-53
Fred Larson
Mary Madden
Michael Madden
Philip McKnight
Don McLucas
Jim Millinger

Margaret Parker
Paul Rosenzweig, W-43
David Ross
Carolyn Sheild, W-77
Galen and Anne Stone
Janet Wagner
Eric Wolman

Major Donors Club

MASTERS (\$10,000 AND ABOVE)

Anonymous (3)
Rick and Nonnie Burnes
Levin Campbell, W-60
Sarah Clowes, W-145A †
Morris and Elizabeth Kellogg
Robert Knapp, W-99, and Kristin Collins
Edwin and Linda Morgens
Margaret Parker
Matthew Sarver and Lauren Morgens, C-158 †
Manning and Virginia Smith †
Brooks, W-36, and Catherine Wallin
Steuart Walton, W-158B †
Thomas Watson and Rowan Smith, S-183

HELMSMEN, (\$5,000 TO \$9,999)

Anonymous
Timothy, W-54, and Sandy Armour
Jacob and Barbara Brown
Walter and Kiyoko Brown
Peter and Susan Forster
John, W-20, and Cheryl Gerngross
Kathleen Joseph, W-58 †
Jeff and Maria Mason †
Bartlett and Cynthia McGuire †
Robert and Susan, W-10, Nalewajk
Clare Parker, C-138 †
Leroy and Winifred Parker
Christopher, W-6, and Diane, W-16, Penn
Arden Pickoff-Rafferty, S-248
Thomas Rafferty and Dian Pickoff
George and Kathy Putnam
Robert and Stella Mae Seamans †
Eric Swergold, C-102, and Dawn Dobras
Robert Szafranski, W-98, and Nguyet Vo

MATES (\$2,500 TO \$4,999)

David, W-71, and Lynn Butler
Richard, W-7, and Cynthia Chandler
James and Ruth Clark
Judith Cook
Samuel and Margaret Gray
Edwin and Cassandra Milbury
Robert and Sally, W-15, Quinn
Michael Rothman and Bonnie Fry Rothman, W-103
G. West and Victoria Saltonstall
George Stone and Gay Callan
William and Mary Warden
Richard and Anne Webb
Charles, W-40, and Gale, W-30, Willauer
Eric and Sandra Wolman

Major Donors Club (continued)

SEAFARERS (\$1,000 TO \$2,499)

Donald and Barbara Abt
Peter and Stephanie Appleby
Franklin, W-43, and Nancy Armour
Richard Armstrong, W-13
Susan Avery †
David Bae and Janine Shissler, C-110
Emily Bramhall, W-27
Margaret Brandon, W-48 †
John, W-98, and Rachel Cahill
Seth, W-132, and Kirtley Cameron
Levin and Eleanor Campbell
Robert Campbell, W-58
William Cramer †
David Drinkwater, C-113
Peter and Cynthia Ellis
Ford and Jean Elsaesser †
John Evers* †
Ralph and Erika Forbes
David, C-174, and Laura Frank
John and Meryl French
Michael and Heather, W-137, Goldberg
Caroline Good, W-136 †
Virginia Gray
Richard Hawkins and Marian Ferguson
Jerome and Anne Heller †
David and Ilona Higgins
Daniel and Lori Hirce
Ryan Hirce, S-221
Robert and Christine Holo
Gordon and Elizabeth Hughes
Ambrose and Anna Jearld
Barbara Woll Jones
Jonathan Kaplan and Marci Glazer, C-103
Brandon Kampschuur, S-209
Edward Kane and Martha Wallace †
William and Jaynie Kind
Walter Kuklinski and Jessica McWade †
James Lazar, W-78, and Carolyn Leep
Kenneth and Ardelle Legg
Beau, W-132, and Jennifer Lescott †
Jian Lin and Kelan Huang †
George Lohmann and Susan Humphris
Edward and Grace Madeira †
John Maguire and Linda Cox Maguire
R. Hardin Matthews and Jane Dougan
Jeffrey and Kathryn McCarron
Philip and Kathy McKnight
Daniel and Amy, C-151, McMorrow
Peter and Valerie McNeely
Steven Morgan
Michael Murrell and Jane Caffrey, W-55 †
Paul and Mary Perkins
Peter and Victoria, W-77, Philip
Carol Przsinda
Dwight Reese, W-41
Matthew Reynolds and E. Denley Poor-Reynolds, W-57
David and Marian Rocker
George Rockwood
Hal, W-38, and Lisa Rose †
Paul Rosenzweig, W-43, and Kathleen Kunzer
Edward and Susie Rowland
Arthur and Laurie Sackler
Daniel Scheuer

Matthew Scheuer, C-240
Arah Schuur, W-122 †
Michiru Shimada, C-148
Chester and Leslie Siuda †
Cutter and Stacey, W-153, Smith †
Bryan, C-183, and Rebecca, C-183, Sparkes †
Veronica Sperling
Eric Swergold, C-102, and Dawn Dobras
Leopold and Jane Swergold
Walter and Nancy Thompson
Rachel Tilney, C-109
Jeffrey and Rebecca, C-144, Trachsel †
Janet Wagner
Christopher and Katherine, W-21, White †
Richard Wilson
Bonnie Wood, W-36, and Janet Wheeler
George and Katharine Woodwell
G. Stewart and Mandy Young

BOW WATCH (\$500-\$999)

John and Judith Alexander
Ronald and Kay Baird †
Talbot Baker, Jr.
Steven Barkan and Barbara Tennent †
Katrina Barnes, S-210 †
Donald Bell and Elizabeth Mc Nerney
Andy Black, C-107 †
William and Beatrice Booth
John, W-137, and Mayumi Bowen
Francis and Margaret Bowles
John and Nancy Braitmayer
David Brown and Sheila McCurdy †
Kathryn Carlson, W-94
Peter Cheimets, W-7, and Karen Benedek
Douglas and Jocelyn, W-46, Childs
Russ, W-34, and Betsy Chinnici
Steven, W-90, and Sandy D'Antonio †
Duane De Freese, W-26
Ian Desai, S-185
Rohit and Katharine Desai
Nicholas and Birgitte Dill
William, W-35, and Deborah Duggan
Harlow Farmer and Nina Lian, W-39 †
David Fisichella and Amy Bower, W-47 †
Richard and Joan Francolini
Stuart Frank and Mary Malloy
Robert and Diana Friedman
George, W-154, and Sandra Gilpatrick
Amanda Goodpaster, C-112
James and Carol Greenough †
Kevin Holden and Judith Gregg-Holden, W-96
Stephen and Sally Gresham †
Lola Grillo, S-218
Peter and Marion Grillo
Elizabeth Haffenreffer, S-191
Jane Hallowell
Sally Hatala
Joseph Hickey, W-128
James, C-140, and Diana Higgins
Anthony and Lynda Hitschler
Melville Ireland †
Katherine Irvine, W-83
Alexander and Nora Jinishian
Garrett and Barbara Johnson †

Steven and Carolyn, W-36, Jones Kirk, W-111, and Elana Keil
John and Louise Kingsbury
Thomas and Susan Knight
Dave Lemonick and Mary Tuttle †
George and Emily Lewis †
Norman, W-48, and Sarah Livingston
Robert and Constance Loarie
Vincent and Crystal Lucchesi
Tom Luxon and Ivy Schweitzer
Josh and Erin, W-155, Madeira †
Timothy Mahoney and Pamela Donnelly †
Catherine Mannix, W-63
Osamu and Grace Matsutani
Caleb McClennen, W-144
Gordon and Judy McGovern
Georges and Mary Mejaes
Richard and Katherine Mellon
William and Audrey Meyer
Jim Millinger
Destaye Moore, S-190
Marieta Moore
Ryan Mullins, C-204 †
Christopher Myers, W-68
Abraham Nussbaum and Elin Kondrad, C-153 †
Ryan O'Toole, S-209
Finley and Patricia Perry
John and Charlotte Phillips
Christy Pichel
Malin Pinsky and Kristin Hunter-Thomson, W-177
Marc, W-141, and Emily Porter
Kenneth, W-43, and Judy Potter
William and Diane Pulleyblank †
Daniel, W-57, and Amy Beth Quible
Robert and Judith Quinlan
Abbott and Katharine Reeve
Aaron Roland, W-18, and Annelise Goldberg
Craig, W-37, and Kristi Russell
Carl Safina
John and Katrina, W-15, Schilling
Keil, C-110, and Margarita Schmid
Gary Schwarzman
Scott Seaver, W-31 †
Ross and Kathleen Sherbrooke
Sally Skimin, C-119
Andy Smith and Meghann Horner-Smith, C-163
Holbrook, C-105, and Tracy Smith
Richard and Kim Soule
Wallace and Pamela, W-75, Stark
Peter and Elizabeth Thomson
Joseph Twichell
Robert Van Alen, W-121, and Colby Enderton
John, C-113, and Susan Waldren †
Joshua Weil, W-79, and Claire Mollard
Thomas Weschler
Anthony and Rhoda Whittemore
Edwin, W-81, and Susan Williams
Sylvia Wolf, W-37 †
Alastair Wolman
Glen, W-118, and Lisa Wortman
Erik Zettler and Linda Amaral Zettler
Tania Zouikun

On the following pages, **bold** type indicates donors who have contributed for at least 10 consecutive years. † Indicates donors who have contributed for at least 5 consecutive years.

ANNUAL FUND Alumni Donors

- 01**
Kurt Erickson
Ann Street
Craig Williamson
- 03**
Thomas Carley
Samuel Howe
John Millar
Tom Robinson
- 04**
Carl Hauquitz †
Andrea Hurtt
- 05**
Larry Kammer
John Wigglesworth
- 06**
J. Blair Hamilton
James McSwiggen
Christopher Penn
John Sculley
- 07**
Richard Chandler
Peter Cheimets
John Hacunda
Cynthia Hyde †
Alan McIlhenny †
Andrew Rosenberg †
- 10**
Gary Borda †
William Davies
Susan Nalewajk
Andrew Wolf
- 11**
John Herman
Paul Toczydlowski
- 12**
Steve Wagner †
- 13**
Jamie Deming
Richard Armstrong
Leslie Rosenfeld †
- 14**
Jean Marvel
Steven Waterman
- 15**
Todd Carlson
Sally Quinn
Katrina Schilling
Aprille Sherman
- 16**
Walter Mitchell †
Diane Penn
- 17**
Janice Olsen
- 18**
Nancy Beall Hendren †
Lucy Loomis
Marilyn Proulx
Aaron Roland
William Wulsin
- 20**
John Gerngross
Peter Rodin
- 21**
Jacob Korngold †
Raymond Palombo
Katherine Sawyer White †
Robert Wiberg
- 22**
Clifford Low
Stuart Stedman †
Peter Thomas
- 23**
James Bruce
Seth Garfield
Steve Hudson
William Snedden †
Gregg Swanzey
- 24**
B. Cort Delany
- 25**
Allison Schumer †
Nan Walker
- 26**
Thomas B. Clark
Duane De Freese
Claudia de Mayo
Richard Wood
- 27**
Emily Bramhall
George Hall
- 28**
S. Thompson Bolmer
Jonathan Hart
- 29**
Anonymous
Heidi Kaplan
Roger Noble
Robert Swarm
- 30**
Christine Duerring †
William Fanning
Mark Klemperer †
Dody LeSueur
Gale Willauer
Kristina Wood
- 31**
Anonymous
Eleanor Mariani
Scott Seaver †
- 32**
Chel Anderson
Elizabeth Billig
Susan Scotto-Dyckman †
- 33**
William Balch
John Beaman †
Anne Chapin
Susan Kearney
Anita Meissner
John Quilty
- 34**
Russ Chinnici
- 35**
Anonymous
Henry Amabile †
Leslie Bulion †
David Donegan †
Ellen Doris
William Duggan
Jonathan Leavitt †
Michael Nathan
Melinda Edgerley Pearce
John Taylor
- 36**
Loralee Clark †
Carolyn Jones
Brooks Wallin
Leslie Will
Bonnie Wood
- 37**
Stephen Burnham
Craig Russell
Sylvia Wolf †
- 38**
Anonymous
Hal Rose †
- 39**
Nina Lian
Janet McMahon
Elisabeth Morris
George Rockwood
- 40**
Gail Lima
Charles Willauer
- 41**
Ella Quintrell
Dwight Reese
Hervé Thébault
Marion Valpey
- 42**
Mary Jo Dedon
Julie Miller
James Snyder
Daniel Tierney
- 43**
Franklin Armour
Ross Friedman
Dave Goldsmith
R. Steve Luce
Kenneth Potter
Paul Rosenzweig
Christina Swanson
- 44**
Katherine Bradford †
Mary O'Brien
- 45**
Gwen Burzycki
Grace Evans
Dennis Fitzpatrick
Lynn Collins Francis
Nicholas LaFond
Martha Martinez del Rio
William McMahon †
Mark Tedesco †
Robert Visnick †
- 46**
Jocelyn Childs
Bradley Dyer †
Agnes Rapoli
Stacy Rappleyea
- 47**
Amy Bower †
Andrew Goode
Kevin Muench
Kristin Thompson
Edward Tokarski
- 48**
Margaret Brandon †
Wendelyn Duquette
Brenda Fogarty
Rodman Getchell †
Doug Goldhirsch
Edward Grier
Helen Jackson
Norman Livingston
Lori Petitti
Christopher West
Amy Wolff
- 49**
Anonymous
- 50**
Anonymous †
Priscilla Brooks
Jeffrey Dickison
Lisa FitzGerald
Wynn McCloskey
Robert Nolan
Kathy Tokos †
- 51**
Cara Adler
Deborah Arey
Susan Bernacki
Cornelia Brown
Susan Duke
Hilary Hudson
Susan Mann
David Whitney
Karen Woodberry
- 52**
Paul Berkner
Gwenllian Scott
Linda Carlson Witte
- 53**
Michael Gregg
Mickey Jones
Patricia Keoughan
- 54**
James Anderson
Timothy Armour
Mariette Buchman
Chris Patricoski
Robert Schoenberger
Nickoletta Swank
- 55**
John Abrams
Jane Caffrey †
Nancy Gravina
James House
Brian Marotz
Marc Overlock
- 56**
Jeanne Foussard †
Steve Lemos
Damon Matson
Peyton Robertson
Marie Vayo-Greenbaum
- 57**
Carin Ashjian
Douglas Eisinger †
Marla Gearing
Rebecca Hemphill
E. Denley Poor-Reynolds
Daniel Quible
Charles Robinson
- 58**
Robert Campbell
Charles Holloway †
Kathleen Joseph
Adrienne Kalbacher
Stephen Lafrance †
Lauren McKean
Allen Reilly
- 59**
Anonymous †
Claudia Corwin
Aaron Horwitz
Margaret Jay
Patrick Keenan
Sarah Klontz
Sarah Kohl †
Sarah LeDoux
Lynn Mahaffy
Patricia Mahoney
- 60**
Levin Campbell
Margaret Carroll
Christopher Kelley †
Ellen Mihaich
Martha Moulton †
William Romey
- 61**
Deborah Carlson †
Darik Corzine †
Cari Furiness
Patricia Goffinet †
Thomas Goffinet †
Jennifer Sturmer
Lawrence Taborsky
Matthew Tanzer
Craig Timmins
- 62**
Randall Bouchard
Barbara Dinkins
Elizabeth Briggs-Feighan
David Jenkins
Drew Schembre
- 63**
Jeanne Grasso †
Flournoy Holland †
Elizabeth Jakob
Catherine Mannix †
Andrew Milliken
Peter Nalen
Renee Turley †
- 64**
James Kerney
Gail Kineke
- 64 (continued)**
Albert Potts
Cynthia Robinson †
Susan Service
Lisa Sherman
- 65**
Janvrin Demler †
Susan Pierce Ferrari
Philip Huffman
Penny Lacroix
Amanda Madeira
Mary Ellen Masciale †
Alec Maxwell-Willeson
Cy Oggins †
- 66**
Reneè Allen
Greg DiLisio
Hugh Ferguson
Sarah Gould
John Kelley
Sarah Murdock
N. Allyn Pistole
Jennifer Woodward
- 67**
Carolyn McConnell-Reeder
David Raible †
- 68**
Edward Conti
Tisa Hughes
Cynthia Layport
Christopher Myers
Laurie Radovan
- 69**
Mary Ann Boyer
Catherine McCabe
Mark Nelson
Elizabeth Reuman
Nancy Williams
- 70**
Janet Buskirk
- 71**
David Butler
Kristina Caldwell †
Helen Hollingsworth
Richard Murray
Stacie Leo Pinney
Dean Smith
- 72**
David Brown
Merril Cousin †
Michael Jacobson
Alexandra Murphy
Christopher Perry
Norman Price
Todd Rambo
Edward Walton
Elizabeth Whyley
- 73**
Frederick Breaux
Sarah Enright
Kimberly Heiselman
Amy Ward
- 74**
Wendy DiChristina

ANNUAL FUND Alumni Donors (continued)

75 Lisa Ballard Elizabeth Doxsee † Kelly Dryden † Catherine Jahrling Jeremy Salesin Pamela Stark	88 (continued) Robert Ultan Kathryn Wheeler	98 (continued) Robert Szafrenski Valerie Zandoli	109 Kerry Dorton B. Clayton Gentry Jennifer Haddock Laura Kenna Christopher Knowlton Katherine Mansfield Frederick Stewart Rachel Tilney	119 Walter Carr † Shannon Doubet Craig Marin Karen Sauls Sarah Skimin	129 (continued) Duncan Eccleston Heather Kelly P. Randall Leiser Matthew Luecke † Jennifer McDermott David Nalchajian †
76 Scott Doney † Lisa Lierheimer † Patrick O'Reilly	89 Jeanette Fielden † Peter Hodum † Helen Rozwadowski	99 Stephen Cann Deborah Greene Robert Knapp Christopher Legault William Ross Karin Wagner † Keith Wight	110 Christopher Ducko † Christopher Reich Keil Schmid Janine Shissler	120 Jeffrey Hughes Krista Longnecker Anne Ogilvie † Michele Timko	130 Nathaniel Dykstra Ravi Lumpkin Elizabeth Lyman Heidi McCann Robert Walsh Bradford Whiting
77 Glen Leer Elisabeth Marr Victoria Philip Carolyn Sheild Katherine van Liere †	90 Stacy Allen Valerie Beck † Steve D'Antonio † Ingrid Dockersmith Barbara Maynard † Barbara Toomey † William Toomey †	100 Stuart Friedman Christopher Kilbridge † J. Parke Logan Susan Marks Pawlak Catherine Roosevelt Roshan Swope	111 Robert Anderson Greg Castell Shelby Collier † Curtis Dailey Kirk Keil Marc Leonardo James Ramsdell Elizabeth Tuohy	121 Katherine Cardinal Pamela Clark † Elissa Katz † Katherine Lund † Wendin Smith † Robert Van Alen	131 Matthew Holstein Virginia Leslie Mary Myles
78 Anonymous Charles Courtsal James Lazar Philip Marsh Katherine Porterfield Thomas Rohrer	91 Scott Goldsmith Nils Jackson	101 Gregory Burdick † George Duane Karen Rennich Eric Sigler †	112 Amanda Goodpaster Nancy Israel David Lamberger † Lisa Carter Moerner	122 Gordon Bunting Andrew Daniels † Tom Goddard Nora Kenneway † Ellen Kraemer Joshua Rocker Arah Schuur	132 Seth Cameron Andrew Enright † Brannon Fisher † Justin Harrison Erin Koenig Beau Lescott †
79 Susan Boehme † Virginia Pillsbury Stephen Rader † Joshua Weil Benjamin Wolff †	92 Michael Aasland Paul Anastasio Laurel Anderson Gregory Braun Martin Chin Michelle Dorlon Heather Franklin † Siobhan Gordon E. Bradley Grenham † Benjamin Hall † Lucy Hersey Janet Keeler Aimee Kemper Patricia Murer † Jennifer Nauen Daniel Rolince Aaron Rugh † Claire Timbas Sue Woodward Patrick Worfolk †	102 Holly Davis Johnna Doyle † K. Brennan Klose Daniel Polidoro Eric Swergold Amy Young	113 Jonathan Burke † Jonathan Burt Drusilla Clarke Rebecca Countway David Drinkwater Scott Gilbert Leanne Kersey Joseph LeProhon Roger Pinnicks Richard Schlereth John Waldren †	123 Anonymous Chris Gregory Matthew Johnson Alexis Levitt Matt McKenzie † Laurie Morgado Michael Sklar †	134A Pat Harcourt
81 Jonathan Detwiler George Leonard James Morrill Rochelle Seitz Edwin Williams	93 Amy Blumenberg Amy Logan	103 Anonymous Christabel Choi Marci Glazer Steven Hilger Bonnie Fry Rothman	114 Stacey Beaulieu Craig Butterworth Jennifer Childress Jackson Murphy † Jennifer Van Ness Brian Watson † Daniel Wilcox	124 N. Craig Gorton Matthew Straus	135 Jay Bonahoom Heather Bryant Noah Coons Shannon McKenzie † Peter Tilney
82 David Bank †	94 Kathryn Carlson Thomas Jester Jeffrey Packman	104 Elizabeth Hasse Terri Lehman † Gary Matusow Amy Vince †	115 Julia Gutreuter Rebeka Merson Valerie Solar Woodward Jocelyn Stamat †	125 Elizabeth Gilgan Matthew Hebard † Margaret Millings	136 Caroline Good Jacqueline Mitchell
83 Susan Farady Lynne Holler Katherine Irvine Steve Laster †	95 Cynthia Badan Robert Bein † Philip Conner † Brian Levy †	105 Erin Black Susan Carter Lori Givonetti Andrew Rhoades Holbrook Smith Alton Straub	116 Peter Bender Maribeth Cyr Amy Harry	126 Danielle Bornstein-Elbirt † Aron Clymer Charlotte Hanley-Jacobson Kimberly Howland Erin Hubbard Sarah Raunecker Erica Starr David Warren †	137 John Bowen Eliza Fortenbaugh † Jason Francis Heather Goldberg Kristin Russell Aaron Sloboda Eric Stoddard Elinor Todd † Amanda van Heyst Sarah Weinstein-Knowlton
84 Elizabeth Concaugh † Christopher Ferguson Nina Neshor Richard Pendleton † Susan Perelman Carl Stevens Elizabeth Stevens	96 Michael Budniak Judith Gregg-Holden Charles Snee	106 Rebecca Arenson-Rachlinski Ginny Eckert Hannah Parker †	117 Kristen Bailey Megan Baker Troy DeRego	127 William Aquila † Peter Colby Kim Decker	138 Cara Fritz † Clare Parker †
85 Jennifer Allen Robert Beede Katharine Jensen †	97 Andrew Campbell † John Cooke Michael Johnson Trap Puckette Ngoc Thai Teresa Weronko	107 Andrew Black † Katherine Cherian Daniel Evans Michael Loyd Carrie McCusker Rachel Parry Courtney Richmond	118 Maralee Harrell Pamela Jones † Megan Murray Glen Wortman	128 Naomi Darling Joseph Hickey Nicole Stephenson Heather Stone	139 Jonathan Levy Catherine Parker
86 Vincent Hormovitis Timothy Kenna	98 John Cahill Marjorie Friedrichs Martha Stark †	108 David Bernhart † Kathryn Brandt S. Brooke Brown Jonathan Dunfee Sarah McIlroy		129 Bruce Armbrust Christian Cox Sarah Das	140 Jessica Forton † Wendy Goyert † James Higgins Jennifer Mott
87 Andrew Felcher David Johnson Ashley Ransom					140A Peter Bertash
88 Kelly Fuentes Steve Gold					

On the following pages, **bold** type indicates donors who have contributed for at least 10 consecutive years. † Indicates donors who have contributed for at least 5 consecutive years.

ANNUAL FUND Alumni Donors

<p>141 Cheryl Kearns Jonathan Kohler Darrin Ladd Aurianne Lopatka Marc Porter Eric Tytell</p> <p>142 Erin Gutierrez Amy Siuda † Stephan Tompsett</p> <p>143 Anonymous Donald Keel</p> <p>144 Sarah Baraff Alisa Barnard Olivia Hauser J. Bradford Hubeny Bradley Jewett Caleb McClennan Andrew Siuda † Rebecca Trachsel</p> <p>145 Brendan Blumenstiel Scott Boughton Adam Heffernan Jonathan Zwarg</p> <p>145A Sarah Clowes †</p> <p>146 Jennifer Baughman</p> <p>146A Robert Jaye †</p> <p>147 Andrew Brodie Patricia Buckley Emily Hatfield † Sarah Stearns</p> <p>148 Kelwin Conroy Patrick Convery Brook Detterman Susan Hammond † Michiru Shimada</p> <p>149 Sarah Bryant Charlotte Engelman Nathan Kranes Daniel Pollard Michael Reilly † Rachel Wade</p> <p>150 Matthew Bernier Joseph Creney Anne Elefterakis Catrina Parrott Philip Petrone Sarah Webster †</p> <p>151 Amy McMorrow</p> <p>152 Kathleen Hallee †</p>	<p>152A Nancy Cande † Judith Morlan Maureen Nolan Richard Rodin Stacey Strong</p> <p>153 Renee Baribault Joshua Frederickson † Molly Frederickson † Elin Konrad † Christopher Lanoue Jessica Macrie † Scott McAuliffe Stacey Smith † Lauren Turner Julie Vecchio Shane Walden</p> <p>154 George Gilpatrick Kathryn Hubeny Bryan McCarthy</p> <p>155 Catherine Bozek † Erin Madeira † E. Anders Matney</p> <p>156 Anonymous Kathleen Kennedy</p> <p>157 Andrew Loschert Meggin Taylor</p> <p>158 Lauren Morgens † Brian Sperling †</p> <p>158A Bonnie Garcia Clarice Holm † Antoinette Kelly † Mary Anne McQuillan</p> <p>158B Steuart Walton †</p> <p>159 Robert Hancock † Jaime Mason † Anne Samuel Justin Taylor Lauren Taylor David Walsh</p> <p>160 Timothy Dwyer † Joshua Newth</p> <p>161 Amy Ballentine Stevens Curtis Barry Sarah Bunker W. Van Cantor † Jay Reynolds Reid Smith Melissa Solomon Darlington</p> <p>162 Elizabeth Ellwood † Katherine Fish</p>	<p>162 (continued) Jodi Meck Johanna Mendillo † James Thomson Stephanie Trafton</p> <p>163 Anonymous Jaime Beranek † Meghann Horner-Smith</p> <p>163A Matthew Gangl</p> <p>163B C. David Burt Michael Horn Janet Loynes</p> <p>163C Susan Wainwright</p> <p>164 Anonymous † James Hildebrand † Joslyn Meier Zoltan Szuts</p> <p>165 Gabriella Andrews Kate Buckman Deborah Liptzin Emily MacKinnon Morgan Simmons † Benjamin Urmston †</p> <p>166 Gwendolyn Hancock † Alexander Hay</p> <p>167 Heather Borkowski David Carlson Marguerite Fontaine † Sarah Gonnella Benjamin Hussa Sarah Ladd Nicholas Pflieger</p> <p>168 Meghan Blake Ashley Francis Elizabeth Grubin † Diane Morgan Gretchen Stuppy Carlson</p> <p>169 Ryan Gordon</p> <p>170 Peter Frantz Amy Gubbins Adrienne Makita Rebecca Royal</p> <p>171 Nicole Cheatle M. Graham Furlong Laura Gilbert Alison Gray † Justin Martinich † Anna McGaraghan † Sarah Spotts</p> <p>172 Eric Hartge Morgan Nickerson Elizabeth Stefany</p>	<p>172 (continued) Elizabeth Strojny* Adam Vitarello Patrick Wood</p> <p>173 Lauren Davies Elizabeth Eden Kyle Helland † Eric Lessard</p> <p>174 Anonymous Christopher Acheson † Brian Ambrette Erica Bradstreet † Nicole Casper David Frank Whitney Horstman Walton Shepherd</p> <p>175 Peter Hahn Jessica Starr Boz † Ashley Swain</p> <p>176C Sarah Shea</p> <p>176D Lucy Trainor</p> <p>177 Colleen Allard Sarah Borgstadt-Smith † Christopher DeCosmo Kristin Hunter-Thomson Amy Larocca Amanda Zoellner †</p> <p>178 Samuel Chamberlin Juliana Miller Leonard Pace Steve Ruane</p> <p>179 Allison Binkowski Kalmia Buels Elizabeth Burakowski Jonathan Cedar Rebecca Hooper Holland Jaime Jones Jonathan Kling † Callie Scheetz †</p> <p>180 Choya Adkison-Stevens Katherine Florio T. Oliver Hay Bradley Kraushaar † Juliette McCullough † Kristen Starbuck Erik Wallenberg †</p> <p>181 Amanda Hollander Jillian Ladegard Toby Mandel Hedger † Aimee Rowe † Caleb Scheetz † Laura Kate Schrepfer</p> <p>182 Jaclyn Bell Laura Uridil †</p>	<p>183 Anonymous Laura Hutton Abigail Kirchofer † Thomas Martin Rowan Smith Bryan Sparkes † Rebecca Sparkes †</p> <p>184 Anonymous Hilary Branch Emily Doren Phoebe Evans † Christopher Krieger Abigail Magni Lev Nelson † Geneva Michaelcheck Matthew Peters † Deborah Shelton Gregory Voll Lauren Zike</p> <p>185 Ian Desai †</p> <p>186 Sarah Gross Jacob Keaton Jason Saxe Kevin Sullivan † Allison Taylor †</p> <p>187 David Benack Alice Chen Sarah Rubenstein</p> <p>187D Thomas Gagnon †</p> <p>188 James Palardy †</p> <p>189 Scott Hiller Laura Nelson Wil Palmieri</p> <p>190 Allison Dutton Benjamin Erne Lauren Gilbert Heidi Miller Destaye Moore Ryan Walsh †</p> <p>191 Antony Adler Sara Andreatta Elizabeth Haffenreffer Hilde Khou † Benjamin Schellpfeffer Carey Tinkelenberg</p> <p>192 Laryssa Hiller Alexandra Niederauer Lindsey Palardy † Erin Roach Nicholas Shonka</p> <p>193 Anonymous Andrew Ault Mark O'Brien</p>	<p>193E Carl Katsu*</p> <p>194 Meghan Kallman</p> <p>195 Anonymous (2) Shannon Coleman Catherine Crafts M. Charles Festa Randolph Jones R. Gardner Loring Maureen Lynch Brittain Mason Kimiko Nakamura Sarah O'Connor Elizabeth Rice † Hannah Roth † Jeremy Wansor</p> <p>196 Maya Gomes Allison Klein †</p> <p>197 Sarah Herard Steven Ibara Roman Kichorowsky</p> <p>198 Anonymous Sarah Clement Hillary Goodell Erik Johanson Min-Yi Jou †</p> <p>199 Rika Anderson Erin Soucy</p> <p>200 Elizabeth Davis</p> <p>201 Anonymous Margaret Gregor Anna Stevens Eleanor Tripp †</p> <p>202 Matthew Blumenfeld † Noah Kaufman † Bonnie McGill †</p> <p>203 Jonathan Fagan Annika Savio † Andrew Scott</p> <p>204 Alexander Dorsk † Scott MacLellan Ryan Mullins † Rachel Philbrick Sarah Pilzer † Roman Shor Daniel Stone †</p> <p>205 Robert Thompson</p> <p>206 Timothy Nedimyer</p>
--	--	---	--	--	--

* Deceased

ANNUAL FUND Alumni Donors (continued)

207 Hiroaki Tanaka Lauren Wang Alan Worf	213 (continued) Kathryn McMullan † Reid McMullan † Kristina Muscalino	219 (continued) Michael Raymond Sarah Schmidt Jana Spencer †	226 (continued) Samantha Akiha J. Alexander Brett Samuel Seymour	236 Kimberly Reed Dorothy Smith Matthew Tantillo	244 Anonymous Henry Bell Chelsea Johnson Rebecca Ogus Patricia Pyda Shenandoah Raycroft Leona Waller
208 Adam Carpenter Virginia Engel Haley Kimmet Ashleigh McCord † Marit Pollei Jameson Rogers Jane Sarno †	214 Anne Brett Adam Kumm Sarah Powell Catherine Schrankel	220 Paul Dixon †	227 Jordan Eckstein	237 Anonymous Kristen Bair Shelley Kind Lauren Krug Justin Painter Kelsey Wilcox	245 Hannah Aichelman Jennifer Binkowski
209 Anonymous Emma Bishop Christopher Gresham Krista Hoff Brandon Kampschuur Ryan O'Toole Deena Tvinnereim Mara Vaile	215 Megan Cook Laura Duffy † Emily Hewitt Elizabeth Koch Krystle McMaster † Allison Pfeiffer	221 Athena Aicher Laura Dismore Ryan Hirce	228 Elizabeth Eaton	230 Cynthia Chadwell Amy Kimm Henry Philip	246 Anonymous Joshua Sturtevant
210 Katrina Barnes † Jessica Donohue † Katherine Letourneau Bradley Nicholson †	216 Aileen Caldwell Emily Chandler † Nicholas Graham Sarah Parkinson Stephanie Penn	222 Hannah Albarazi Casey Canfield Luay Khoury Rachel Luban † Leigh Quenin † Jeremy Tagliaferre Carolyn Tarpey	231 Evan Oleson Emma Poland Collin Schmitt	232 Joseph Carver Marissa Tremblay Flora Weeks	247 Anonymous Taunya Coutts Andrew Dougherty Ethan Edson Matthew Flynn Rachel Green Alice Henry Steven Houang Bethany Kolody Katherine Lipp Manasi Malik Mariana Mata Lara Lauren Nickerson Leyana Romain Gregory St. Aubin Claudia Villar-Leeman Scott Watters
211 Katherine Boldt Love † Carla Scocchi	217 Hannah Green	223 Marina Garland	233 Nicholas Constantino Elizabeth Dorr Amber Hewett Heidi Hirsh	239 Anonymous (2) Matthew Harrison Hedee Kim	248 Kristen Butler Brendan Casey Joshua Friedman Arden Pickoff-Rafferty
212 Craig McMaster † Lauren Schroedter † Holly Taylor Thomas Whiting	218 Lola Grillo Darcy Mullen Lupita Ruiz-Jones	223C Erik Svarcborgs	234 Nicholas Green Samuel Levang Vivian Torres	240 Spencer Herda Matthew Scheuer	
213 Rebecca Inver †	219 Anne Gerhard Nicholas Iannacone Makaila LaShomb Heather McGee	224 Caroline Callahan Andrew Catherine John Dow Melanie Finn † Miles Fuller Zora McGinnis Landes Randall	235 Laura Lilly Brianna Walsh	241 Jaymes Awbrey Quinn Christie Lillian Pearson Elissa Walter	
		225 Ann Robertson	235C Anna Hitchcock	242 Blaine Darrah Benjamin Donnelly Christina Mullen Annabeth Peterson	
		226 Anonymous	235D Andrew Knowland	243 Allison Hall Ali Uribe	

ANNUAL FUND Parent Donors

Anonymous (12) George and Marjorie Abbot The Adamczyk Family David and Carol Adelson Terry and Sheila Aiken John and Judith Alexander David Altenhofen and Mariette Buchman, W-54 Conrad and Lyn Ambrette Richard and Barbara Angle † Peter Appleby and Stephanie Raia Denise Armstrong † Michael and Jennifer Audette Mark and Christine Awbrey Cynthia Badan, W-95 Steven Barkan and Barbara Tennent † Carlos and Cathy Barrios Richard Batt John and Carol Beach † Michael and Ruth Beeston Charles and Barbara Bell † Donald Bell and Elizabeth McMerney Robert and Julie Bennett † Steve Bernasconi and Karen D'Agusto J. Leonard and Dorothy Bicknell Bradley and Madonna Binkowski James and Virginia Boldt Robert and Kathleen Bonham T. William and Beatrice Booth Stuart and Joan Boreen † David and Harriet Borton	David and Suzanne Boyd Leo and Anne Boyle Peter and Helene Braatz Keith and Mary Jo Bradley † Emily Bramhall, W-27 Jeanne Brody † Walter and Kiyoko Brown William and Sandra Brubaker Mariette Buchman William Buckley John and Marcia Buckman Daniel and Holly Burnes Keith and Kristen Burnham Tony and Nancy Butterworth Peter Calcaterra and Pamela La Rue David and Kristina, W-71, Caldwell † Timothy Callahan Levin and Eleanor Campbell Charles and Linda Canepa Stephen, W-99, and Margaret Cann Tobe and Margaret Carey Craig and Ann Carpenter John and Elizabeth Carver Laurence and Brett Casper Richard and Patricia Cavanagh Christopher Cazeault Denice Chandler and Catherine Jones Peter and Elizabeth Chandler † Stephen and Lynda Chandler Robert and Susan Chennell Douglas and Jocelyn Childs	Sally Christie Dexter and June Churchill Elliott and Judy Clark Thomas Clark and Susan Adams † Katharine Coffin Fred and Barbara Colin Susan Collinson Philip and Rosemary Collyer Judith Cook Oliver and Jill Coolidge R. Bruce Cooper John and Martha Correa Charles and Nancy Craig James and Lynn Crawford James and Martha Crowley James Dahlberg and Deirdre Donahue John and Catherine Damon † Collin Darrah and Antonija Ventenbergs Christopher Davis and Janet McMahon Freyja Davis Paul and Laura de Blank Rodney and Christine Decker † Lorinda Deluca-Fardy Daniel Denov and Carolyn Rusk Rohit and Katharine Desai William and Mary Lou DeWitt Tom and Linda Dieveney Victoria Donaldson Isabella Dorr Charles and Maryann Dorsey Paul Dorsey	Edward and Laura Dougherty John and Roselynn Dow † Charles Duffy and Margaret McKee † John and Merril Dutton Evie Dworetzky Donna Eden Peter and Kathryn Elefterakis Christopher Elliott and Lynne Stanley Karrie Ellis † Peter and Cynthia Ellis Charles Engel † Sarah Enright Stephen and Carole Enright Yasmin Erne † Vivian Esswein † Daniel Farkas Edward Feibel and Catherine Chichester Robert Fisher and Patricia Read John and Caliope Flickinger James and Elizabeth Flynn William and Joan Ford † John and Carla Fox † Edward and Karen Fraioli Richard and Joan Francolini
---	---	--	---

On the following pages, **bold** type indicates donors who have contributed for at least 10 consecutive years. † Indicates donors who have contributed for at least 5 consecutive years.

ANNUAL FUND Parent Donors

Kathy Frederickson
 Ronald Frederickson
 Ronald and Dale Freeman †
John and Meryl French
 Robert and Diana Friedman
 Christopher and Carol Sue Fromboluti
Francis Fruehstorfer
 David and Audrey Funk
 Joseph and Marilyn Galanti †
 Richard Garcia and Jan Burry
 Sheila Gil
 Edna Gillespie †
 Vince Giorgi and Marcia Appel
 John Gleason and Katrina Van Dusen
 Robert and Elizabeth Gniadek
 Frederick and Constance Goethel
 Thomas, W-61, and Patricia, W-61, Goffinet †
 Nathaniel and Joan Gorton
 Joan Granger
Samuel and Margaret Gray
 Eric Green and Carmin Reiss
 James and Carol Greenough
 A. Curtis Greer
 Stephen and Sally Gresham
 Peter and Marion Grillo
 Benjamin Gruberg
David and Joan Grubin
Kenneth and Kathleen Haber
 Harold Hackett †
Peter Haddock
 Douglas and Linda Haley †
 Christopher Hall and Mary Ann Boyer
Jeannette Hall
Thomas and Sue Harding
Robert and Carolyn Harwood
 Sally Hatala
Richard Hawkins and Marian Ferguson
 Dennis and Diane Hayes
 Kathleen Healy †
 Robert and JoAnn Hegermiller
 Carl and Margaret Heise
 Andrew and Phyllis Herz
David and Ilona Higgins
 Daniel and Lori Hirce
 John Hitchcock and Maggie Jackson
 W. Anthony and Lynda Hitschler
Kenneth and Willa Hogberg
 Thomas Megan and Sarah Holden
 Robert and Christine Holo
 Jane Holtz
 Robert and Deborah Hopps
 William and Catherine Hoyt
 Roger Ide and Gail Boettiger
Paul and Marjorie Inderbitzen
 Marc and Bonnie Inver †
William and Karen Irving
 Sheryl Jagerson
 Andris and Clarissa Jakobsons
 Daryl and Kay James †
 Merrill and Lillian Jencks †
 Edward and Myrna Jenkins †
 Alexander and Nora Jinishian
 Alexander and Jill Johnson †
 Garrett and Barbara Johnson †
 Robert and Elizabeth Johnson †
 Susan Jones
 Jack and Cynthia Kadzik †
Werner and Dorothy Kaese
 Edward Kane and Martha Wallace †
 Margaret Kaplan
 Alan and Marlene Kaufman
 Patricia Kelly
 James and Mary Emily Kerney
 Jamal Kharbush and Barbara Olson †
 William and Jaynie Kind
 Edward Kirk

Elmer and Marilyn Klump
 Thomas and Susan Knight
 Michael and Allison Kruczek
 Craig and Susan Landgren
John and Kathleen Lanoue
 Daniel and Sarah Lauer
Paul and Jane Lawrence
 Martin and Linda Legault
 Dave Lemonick and Mary Tuttle †
 Brian and Margarita Lessard
 Alan and Janet Letourneau
 Robert Levine and Vilean Taggersell
 Jian Lin and Kelan Huang †
Robert and Constance Loarie
 Worth and Louise Loomis †
Clifford, W-22, and Randy Low
Vincent and Crystal Lucchesi
 Michael and Patricia Lucy
Myles and Cornelia Lund
John and Susan Mackay
 Edward and Grace Madeira †
Hugh and Ruth Mahaffy
Timothy Mahoney and Pamela Donnelly
William and Christina Maloney
Hugh and Olive March
 Frank and Linda Maresca
 Miles Marshall †
 P. Gail Martin
 Thomas Martin
 John Requardt and Jean Marvel, W-14
 Jeff and Maria Mason †
 Osamu and Grace Matsutani
R. Hardin Matthews and Jane Dougan
 John Matulaitis and Siga Lenkauskas
 Carl and Sharon Matuszek
Mr. and Mrs. Oscar Mayer
 Stephen Nelson and Mary Anne Mayo †
 Joe McAlister
 Brendan and Elise McCarthy
E. Dennis and Sandra McCarthy
Peter McChesney
 Anthony McClellan
Walter and Carol McClennen
 Raymond and Susan McClinton
 Gray McCord and Diane Ingulli
 Jarlath McEntee and Barbara Fleck
 Michael McGinnis and Patricia Shipley
 Bartlett and Cynthia McGuire †
 Mary Lou McGuire
 Peter and Valerie McNeely
 Anne Meigs-Brown
 Georges and Mary Mejaes
David and Veronica Metzler
William and Audrey Meyer
 Donald and Susan Miller †
Stephen and Christina Miller
 Braxton Mitchell †
 Peter and Arlene Mollo
 Marieta Moore
Edwin and Linda Morgens
 John and Carol Morris
 Homer and Beret Moyer
 Brian and Susan Murphy
 Virginia Murray
 Ginny Murray †
 Henri and Madeline Nadworny
Eric and Margaret Neilsen
 David Nelson and Rachel Jewelewicz-Nelson †
 Amos and Andrea Neufeld
 Anne Nichols
 David and Susan Nicholson
 Kyle and Diane Noble †
 Charles and Eugenia O'Brien †
 Kelly O'Brien and Brenda Fogarty, W-48
 Susan Oh
 Richard and Debra Oleson

William Oppenheimer †
 Patrick and Sybil O'Reilly †
 Patrick and Lynn O'Reilly
 Tanja Ostapoff
 Maksymilian and Grazyna Ostas †
 Renée Bennett O'Sullivan †
 Patricia Palmer
Susan Papagiannis
 Stephen and Jenny Paradis
Leroy and Winifred Parker
Rafe and Kate, W-139, Parker
 Robert and Jane Paxton
 Nancy Pendleton
Christopher, W-6, and Diane, W-16, Penn
 James and Debra Peters †
 Barrett and Mary Peterson
Peter and Victoria Philip
 John and Charlotte Phillips
 Christy Pichel
 Robert and Anne Pickart
 Thomas and Mary Kay Pilat †
 Charlie and Cecily Pilzer
 Julie Pivor
 Frank and Susan Poland
 Tiberius and Marcy Pollak
 Walter and Susan Powell
 Robert and Gretchen Prunier
 Richard and Carol Przynsinda
 William and Diane Pulleyblank †
 G. Michael and Shannon Purdy †
 Nelson and Lucia Putnam
Peter and Karen Rabins
 Thomas Rafferty and Dian Pickoff
 Michael and Alicia Rafter
 Charlie Reade and Patricia Nelson-Read
David and Elaine Ressler
 Sara Rhoades †
 Peter Rice and Carol Flynn-Rice
 Christopher Richardson
 J. Christopher and Constance Richwine
 James Roach
 Alison Robb †
 David and Karin Roberts †
Andrew Rockefeller
 David and Marian Rocker
George Rockwood
 Peter and Molly Rodgers
 Beverly Rosenzweig †
 Robert and Patti Ross
 David Rumker and Susan Phillips †
 Randall and Jenifer Ryzd
 Arthur and Laurie Sackler
Jeremy, W-75, and Dianne Salesin
Jane Sattler
 Peter and Karin Savio
 Daniel Scheuer
 Ben Schiff and June Goodwin
 Frederick and Judith Schmid †
 Kenneth Schmitt †
Rosalind Schmitt
 Michael and Roberta Schroder
 Edward Schwarz and Sarah Jane Jelin
 Donald and Melinda Seader
 Richard and Spain Secrist
Richard and Gwyn Sewall
 Edward and Joan Shankle †
Christopher and Margaret Sheedy
 John and Jean Sheild †
 Robert and Linda Shelton
 Robert and Mara Shlachter
 William and Mary Lynn Simmons †
 Chester and Leslie Siuda †
Roger and Carol Sloboda
 Kaighn Smith
 Manning and Virginia Smith †
 Margaret Smith

Wilson and Mary Jane Smith
 Thomas and Barbra Smithgall †
 Peter Snyder and Katharine Dodge
 Richard and Kim Soule
 James and Karen Sparkes
Veronica Sperling
Patricia Sprague
 Fred and Kathleen Stadel
Wallace and Pamela, W-75, Stark
Ronald and Carolyn Starr
 Tamar Stearns
 Maxwell and Sandra Stepanuk
 Daniel Stevens †
 David and Denise Stillinger
 George Stone and Gay Callan
 Greg and Joyce Studen †
 Jennifer and Richard Sturmer
 Paul and Lenore Sundberg †
 Juris Svarcbergs and Nancy Reyes-Svarcbergs †
 James and Aimee Swain
Philip and Joan Swanson
Leopold and Jane Swergold
 James and Julie Swol †
 Allen and Michele Syslo †
Michael and Ann Taylor
 Uri and Marilyn ten Brink
 Elizabeth Thompson
Walter and Nancy Thompson
Peter and Elizabeth Thomson
 Philip and Ellen Tilney †
 Henry and Kathy Tinkelenberg
 Greg and Mary Toney
 William and Barbara Toomey †
 Thomas and Donna Trainor
 David and Ruth Tripp
 William Trumbull and Alisa Caron
 Sergei Tsvetkov and Lynne Allen
 Ellis Turner and Diana Scott
 Elizabeth and Nancy Twichell
 Joseph Twichell
 Michael and Dorothy Vicari
 Armand and Patricia Viscosi
 Bob and Karen Votava
 John Wade and Yuko Higa
 Stephen and Carol Ann Wagner †
 Douglas and Catherine Wall
 Robert and Kathleen Walsh
 Mark and Susan Webster †
 Gary and M. Elizabeth Weimer
 Mark Weintraub and Judith Nakhnikian
 Gregory and Sarah Wetstone
 Thomas and Patricia Whalen
E. Douglas and Barbara White
 John White and Marcia Black
William and Roberta Whiting
 Anthony and Rhoda Whittemore
 Hope Wigglesworth †
John Wigglesworth, W-5, and Priscilla Brooks, W-50
 Jeffrey and Susan Wilfahrt
Charles, W-40, and Gale, W-30, Willauer
Peter Willauer and Carol Nugent
Thomas and Alice Wiley
 Craig and Nancy Willis †
 Marc and Meryl Winnikoff
 Albert and Barbara Wolcott
Edward and Ann Wolf
George and Katharine Woodwell
 Leslie Wolf
 Barbara Worley
 G. Stewart and Mandy Young
 Keith and Kathryn Zammit
 Louis and Pauline Zandoli
William and Elizabeth Zimmermann
 Tania Zouikin
Stephen and Janet Zwarg

ANNUAL FUND Friends

Anonymous (6)
Donald and Barbara Abt
 Tim Aldrich and Diane Eskenasy †
Arthur and Renee, W-66, Allen
 Molly Allison
 John Anderson and Catharine Sherrill
 Susan Avery †
 David and Nancy Babin †
 Ronald and Kay Baird †
Talbot Baker, Jr.
 William and Margaret Bancroft
 Jennifer Barone
 Kenneth W. Baughman
 Tracy Baynes
 Sara Beck
Roger and Masako Bellinger
 Katrina Bercau
Thomas Bethea
W. Jeffrey and Martha Bolster
 Paul Bostrom
Francis and Margaret Bowles
 John and Jane Bradley
John and Nancy Braitmayer
James Breed
 David Brown and Sheila McCurdy †
Jacob and Barbara Brown
 Wendell and Leslie Brown
Rick and Nonnie Burnes
 Mrs. Carleton Burr
 Ernest and Lynne Chadderton †
Morris and Cynthia Cheston
 Kevin Chu and Pat Harcourt
James and Ruth Clark
Carol Cleave
 William Cramer †
 Mrs. William Curby and Matthew Taylor Curby †
 W. Brian Dade
 Barry Dame
Nancy Daugherty
 Howard Deitch
Michael and Jane Deland
 Paul and Ellen DeOrsay
Nicholas and Birgitte Dill
 Robertson Dinsmore
 Jeffrey and Courtney Dorman †
 Neal Driscoll and Cheryl Peach
 George and Dorothy Dunnington
 Paul and Rita Dussault

Sylvia Earle
 Ford and Jean Elsaesser †
 James Emery and Allison Rumsey †
 John Evers *†
 Elizabeth Farnham
John and Shirley Farrington
 Judith Fenwick †
 David Fisichella and Amy Bower, W-47 †
Ralph and Erika Forbes
 Peter and Susan Forster
Robert and Patricia Foulke
 Clayton and Margie Fowler †
Stuart Frank and Mary Malloy
Robert and Alexena Frazee
Robert and Susan Gagolian
 Ian and Josie Gardiner
 Mr. and Mrs. John Gardner
 Seth Gelsthorpe †
Christian Giardina and
Ingrid Dockersmith, W-90
 Robert and Francesca Giegengack
 Virginia Gray
 Benjamin and Erin, C-142, Gutierrez
Jane Hallowell
 Sara Harris and Elizabeth Doxsee †
Robert Hassey and Susan Bozek
 G. Arnold and Carol Haynes
 Dawn Hazelett
Elizabeth Heald
 Jerome and Anne Heller †
 Carl Herzog and Laurie Weitzen †
 Susan and Andrew Hess
Grace Hinkley
 Brian and Caroline Hopewell
Paul and Betsey Horovitz
Gordon and Elizabeth Hughes
 Roy Hughes
 Melville Ireland †
David and Nancy Jackson
Gary Jaroslow and Nancy Parmentier
Ambrose and Anna Jearld
 John Jensen and Karen Belmore †
Barbara Woll Jones
 Royal Joslin †
Donald, C-143, and Anne Keel
 Katherine Keenan
 Jeffery Keener and Janet Loynes
 Jessie Kehr

Tom and Barbara Keith
Morris and Elizabeth Kellogg
John and Louise Kingsbury
 Ronald Klodenski
 William and Deborah Knowlton †
 Walter Kuklinski and Jessica McWade †
Jeremy Law and Kara Lavender Law
 Pam Lawrason
 Robert and Patricia Lawrence †
 Sidney LeFavour †
 Kenneth and Ardelle Legg
 George and Emily Lewis †
George Lohman and Susan Humphris
 David Low and Ellie Linen Low †
 Stanley* and Martha Livingston
 Benjamin Lummis and Katrina Abbott †
 Tom Luxon and Ivy Schweitzer
John Maguire and Linda Cox Maguire
 Dorothy Buck McAuliffe †
 Jane McCamant
 Jeffrey and Kathryn McCarron
R. Gordon and Judy McGovern
Philip and Kathy McKnight
 Richard and Katherine Mellon
 Lew Meyer †
Edwin and Cassandra Milbury
 William and Jean Miller
Jim Millinger
 Rob Moir
Peter Moore and Alicia Hills-Moore
Steven Morgan
 John and Bridget Morton
 Seth Murray and Carla Scocchi, C-211
Douglas Nemeth
 Dennis and Sheila Nixon
Margaret Parker
Herbert Parsons
Edward and Joan Partridge
 Stuart and Martha Pattison †
Paul and Mary Perkins
 Finley and Patricia Perry
 Roger and Sandra Pinnicks
George and Kathy Putnam
Robert and Judith Quinlan
 E. Leigh and Nancy Quinn †
 Christopher and Bryce Reddy †
Abbott and Katharine Reeve
Clare Rhoades

Paul and Maryanne Richards
 Philip and Judy Richardson
 Howard and Margaret Ris †
Peter and Lucy Robbins
Edward and Susie Rowland
 Philip Sacks
Carl Safina
Richard Sailor and Mary Johnston
G. West and Victoria Saltonstall
 Molly Scheu
Mr. and Mrs. Charles Schutt
Gary Schwarzman
 Robert and Stella Mae Seamans †
Ross and Kathleen Sherbrooke
 Justin Smith and Anne Ogilvie, C-120 †
 Stanley and Josephine Smith †
 George and Theresa Stanley †
 Margaret Stark-Roberts
 Thomas and Judy Stetson
 Charles and Susan Stillman
 John and Susan Taylor
 Judy Thompson †
Donald and Shirley Ann Thomson
 Frederica Valois †
Daniel Walker
William and Mary Warden
Deborah Warner
 Joseph Warren †
 James Watters and Ashley Tobin †
Richard and Anne Webb
 Scott Weiss and Deborah Jackson Weiss
Thomas Weschler
 Peter Whittemore
James Wickersham
 Barbara Wicks
 Robert and Ann Williams †
 Susan Williams
Richard Wilson
John Winchester
 Elizabeth Winn †
Alastair Wolman
Eric and Sandra Wolman
 Joseph and Laura Wood
 Lucy Wood †
 Matthew Yanagi
Edwin and Caroline Zimmerman
 Bradley Zlotnick †

ANNUAL FUND Foundations and Corporations

Anonymous (1)
 The Air Products Foundation
 Amazon Smile
 The American Foundation Corporation
 Amgen Foundation
 Anadarko Petroleum Corporation
 AON Foundation
 Appleby Charitable Lead Trust
 Bank of America
 Bank of the West
 Benevity Community Impact Fund
 Biogen Idec Foundation
 BlackRock
 The Boston Foundation
 The Campbell Family Foundation
 Chevron Corporation
 CIGNA
 Citizens Bank Charitable Foundation
 Simon & Eve Colin Foundation, Inc.
 de Beaumont Foundation
 Rohit and Katharine Desai Family Foundation
 Diamond Ice Foundation
 The Henry L. and Grace Doherty
 Charitable Foundation, Inc.

Duke Energy Foundation
 Eaton Vance
 The Eder Family Foundation, Inc.
 Exxon Education Foundation
 Fidelity Charitable Gift Fund
 Fidelity Investments
 Fiduciary Trust Company
 Bob Fleigh Foundation, Inc.
 The Forster Family Foundation
 Foundation for the Carolinas
 Genentech Foundation
 Google Gift Matching Program
 The Gravina Family Foundation, Inc.
 The Greater Cincinnati Foundation
 The Lola B. Grillo Foundation
 Gulf of Maine Marine Education Association
 The Haynes Family Foundation
 Hood River Distillers, Inc.
 J. M. Huber Corporation
 IBM
 Jewish Community Endowment Fund
 The Peter T. Joseph Foundation
 JustGive.org
 J. C. Kellogg Foundation

Kent-Lucas Foundation, Inc.
 Kraft Foods Foundation
 Land O'Lakes Foundation Matching Gifts
 to Education Program
 The Mabee Family Foundation
 McMaster-Carr Supply Company
 MeadWestvaco Foundation
 Merck, Co.
 The MHG Foundation, Inc.
 Microsoft
 Network for Good
 New Jersey Resources Corporation
 The New York Community Trust
 The Nord Family Foundation
 The Pegasus Foundation
 The Pew Charitable Trusts
 PG&E Corporation Foundation
 The Procter & Gamble Fund
 The Prudential Foundation
 The Przsinda Family Foundation, Inc.
 Raytheon Company
 Ropes & Gray LLP
 Henry M. Rowan Family Foundation, Inc.
 Salesforce.com Foundation
 The San Francisco Foundation

The Sandpiper Fund
 Schwab Charitable Fund
 The Seattle Foundation
 Shell Oil Companies
 Alexander C. & Tillie S. Speyer Foundation
 Starbucks
 State Street Matching Gift Program
 The Stocker Foundation
 Stuart Foundation
 Swergold Family Foundation
 TisBest Charity Gift Cards
 Traveler's
 Triangle Community Foundation
 Tulsa Community Foundation
 Tyco
 The U.S. Charitable Gift Trust
 United Way of Northern New Mexico
 United Way of Rhode Island
 Vanguard Charitable Endowment Program
 Wall Family Enterprise, Inc.
 The Wallin Foundation
 The Walton Family Foundation, Inc.
 Waring School
 The Wildwood Foundation
 YourCause, LLC

ANNUAL FUND Restricted Gifts

Ronald and Kay Baird The Boston Foundation Conant and Lorrie Brewer Richard and Nonnie Burnes The Edmund & Betsy Cabot Charitable Foundation The Edmund B. Cabot Trust Virginia Wellington Cabot Foundation Lee Campbell, W-60 Dorothy Carruthers	Mark and Lisa Carruthers Alexander Clowes, S-187 Robert and Jill Eberle Fidelity Charitable Gift Fund Stuart Frank and Mary Malloy Hartford Foundation for Public Giving Emily Hein Robert and Elizabeth Johnson Chester and Debra Kirby Lucy Loomis, W-18	The Estate of Christopher Lovelock Jim Millinger Edwin and Linda Morgens Richard Murray, W-71, and Sara Nuciforo The Oregon Community Foundation Kenneth, W-43, and Judy Potter The Puffin Foundation David and Mimo Riley W. Dixon and Susan Riley Rochester Area Community Foundation	Arthur and Laurie Sackler Matthew Sarver and Lauren Morgens, C-158 Chad and Victoria Smith Janet Wagner The Wildwood Foundation Robert and Ann Williams Bonnie Wood, W-36, and Janet Wheeler
---	---	--	--

ANNUAL FUND Faculty and Staff Donors

David Bank, W-82 † Scott Branco † Margaret Brandon, W-48 † Erin Bryant Dale Dean Jessica Donohue, C-210 † Elizabeth Dorr, C-233	Katharine Enos † Jennifer Haddock, C-109 John Jensen † Paul Joyce Kara Lavender Law Mary Malloy Ashleigh McCord, C-208 †	Audrey Meyer Juliana Miller, W-178 Amy Siuda, C-142 † Victoria Smith Kerry Sullivan Jeremy Tagliaferre, C-222 Janet Wagner	Laurie Weitzen Nancy Wendlandt Erik Zettler Lauren Zike, S-184
--	--	---	---

GIFTS IN HONOR (all funds & campaigns)

In honor of Margaret Brandon, W-48 John Anderson and Catharine Sherrill Christopher, C-153, and Elizabeth Lanoue Thomas and Judy Stetson Robert and Karen Votava	In honor of Jacob Brown's 80th Birthday Margaret Brandon, W-48 Deborah Warner	In honor of Levin H. Campbell, Jr., W-60 Bradley Zlotnick	In honor of Marjorie Moore Crowley James and Martha Crowley	In honor of Ron Deveaux on our 50th Anniversary Faith Deveaux	In honor of Elizabeth Dorr Isabella Dorr	In honor of Peter Elefterakis Anne Elefterakis	In honor of Katherine Williams Enos Robert and Ann Williams	In honor of the Gilbert and Ruane Families Stephen Ruane, S-178, and Lauren Gilbert, S-190	In honor of Gina F. Giorgi Vincent Giorgi and Marcia Appel	In honor of Sam Koss, S-245 Andrew and Phyllis Herz	In honor of Kathleen Lambert, S-182, and Matthew Lambert, C-186 Kenneth and Kathleen Haber	In honor of Kara Lavender Law Gulf of Maine Marine Education Association	In honor of Mary Malloy and Global Oceans Mary and Gerard Swope	In honor of the wedding of Walter B. Mitchell, W-6 Charles Mitchell	In honor of Kathleen M. Murphy Brian and Susan Murphy	In honor of Celeste H. Nadworny, W-45 Henri and Madeline Nadworny	In honor of Rafe and Kate, W-139, Parker Molly Scheu	In honor of the wedding of Marit F. Pollei, S-208 Michelle Redstone	In honor of the SEA Faculty Matthew Reynolds and E. Denley Poor-Reynolds, W-57	In honor of the wedding of David Stuebe, W-150B Bridget Bennett
---	--	---	---	---	--	--	---	--	--	---	--	--	---	---	---	---	--	---	--	---

RESTRICTED GIFTS

Ann Brewer Endowed Scholarship Conant Brewer and Lorrie Anderson	John C. Parker Endowed Scholarship David and Mimo Riley W. Dixon and Susan Riley
Exy Johnson Scholarship Fund Robert and Elizabeth Johnson	Rafe and Kate Parker Endowment Fund Lucy Loomis, W-18
Hallstein Fellowship Endowment John and Helen Davies Hope Wigglesworth	

GIFTS IN MEMORY (all funds and campaigns)

In memory of William O. Apthorp Ross and Kathleen Sherbrooke	In memory of Jock Kiley Edward and Joan Partridge
In memory of Shelby Boardman Scott Rachlinski and Rebecca Arenson-Rachlinski, C-106	In memory of Charles E. McClennen Robert and Carolyn Harwood
In memory of Edmund B. Cabot Nancy Daugherty Rob Moir	In memory of Charles McNamara Martha Moulton, W-60
In memory of Joel L. Cartwright, C-195 Anonymous Rebecca Inver, S-213	In memory of Robert W. McNitt Katharine Jensen, W-85
In memory of Austin A. Corry, S-195 Anonymous Rebecca Inver, S-213	In memory of Rachel Anne Morrison, S-218 Patrick Flynn, S-218 Darcy Mullen, S-218
In memory of Corwith Cramer David and Nancy Babin Rob Moir	In memory of Debra and Dennis O'Neal Juliana Miller, W-178
In memory of Willis Daugherty Nancy Daugherty	In memory of Petey Price Norman Price, W-72
In memory of Edward W. Farrell Barbara Woll Jones	In memory of Saul M. Sacks Janet Wagner
In memory of Henry C. Genthe Roy Hughes	In memory of Edward M. Scheu Molly Scheu
In memory of Peter Gibbons-Neff Jeffrey and Kathryn McCarron	In memory of Robert C. Seamans, Jr. Edwin Zimmerman
In memory of Dennis Gillette Thomas Robinson, W-3, and Linda Epstein	In memory of Rod and Olin Stephens Lew Meyer
In memory of Phillips Hollowell Jane Hollowell	In memory of Robert Vogel Peter Braatz
In memory of Irving M. Johnson James Breed	In memory of Katrina Q. Weschler Thomas Weschler

On the following pages, **bold** type indicates donors who have contributed for at least 10 consecutive years. † Indicates donors who have contributed for at least 5 consecutive years.

NEW DIRECTIONS

Global Ocean

Richard Armstrong, W-13
David Brown and Sheila McCurdy
Jacob and Barbara Brown
Walter and Kiyoko Brown
John, W-98, and Rachel Cahill
Levin Campbell, W-60
David and Jamie, W-14, Deming
The Henry L. and Grace Doherty
Charitable Foundation, Inc.
Fidelity Charitable Gift Fund
Douglas, W-48, and
Sharon Goldhirsch
Gordon and Elizabeth Hughes
Robert and Elizabeth Johnson
Morris and Elizabeth Kellogg
Walter Kuklinski and
Jessica McWade
Bartlett and Cynthia McGuire
Philip and Kathy McKnight
Margaret Parker
Robert and Stella Mae Seamans
Gerard and Mary Swope
The Tilghman Family Foundation
Deborah Warner
Eric and Sandra Wolman

Marketing Strategies

David and Jamie, W-14, Deming
Margaret Parker

New Directions

David and Carol Adelson
Terry and Sheila Aiken
The Air Products Foundation
Tim Aldrich and Diane Eskenasy
Arthur and Renee, W-66, Allen
Brian Ambrette, W-174
Chel Anderson, W-32
Robert, W-111, and
Kimberly Anderson
David and Gabriella, C-165, Andrews
Peter Canning and
Deborah Arey, W-51
Ronald and Kay Baird
Bank of America
Heiner Baumann and
Hannah Parker, C-106
Robert, W-85, and Katherine Beede
Roger and Masako Bellinger
Edgar Bering and Barbara Clark
Paul and Susan, W-51, Bernacki
Biogen Idec Foundation
Thomas and Ingrid Bonsall
Charles Bonser and
Mary Ellen Masciale, W-65
Boston Foundation
Randal Bouchard, W-62, and
Amanda Lincoln
Chris Bradshaw and
Julie Vecchio, C-153
Margaret Brandon, W-48
Gregory Braun, W-92, and
Kathryn Buckley
Frederick, W-73, and Sara Breaux
Sarah Bryant, C-149
William Buckley
Jonathan, W-113, and
Karen Burke
Rick and Nonnie Burnes
David, W-71, and Lynn Butler
Levin and Eleanor Campbell
Adam Carpenter, S-208
Walter, W-119, and
Cassandra Carr
Abby Cazeault, C-226
Christopher Cazeault

Richard, W-7, and Cynthia Chandler
Anne Chapin, W-33
Quinn Christie, S-241
Sally Christie
CIGNA
James and Ruth Clark
Thomas B. Clark, W-26
The Clowes Fund, Incorporated
Dan and Elizabeth, W-84, Concaugh
Merril Cousin, W-72, and
Julia Byrd
Christian, C-129, and Jennifer Cox
Charles and Nancy Craig
William Cramer
James and Lynn Crawford
Michael and Maria Cupo
Michela Cupo, S-244
Raymond and Maribeth, C-116, Cyr
John and Catherine Damon
Andrew, W-122, and
Laura Daniels
Steven, W-90, and
Sandy D'Antonio
Rodney and Christine Decker
Daniel Denov and Carolyn Rusk
Tyler DeWitt, C-186
Jeffrey, W-50, and
Jeanette Dickson
Nicholas and Birgitte Dill
Robertson Dinsmore
David Donegan, W-35, and
Joyce Butler
Scott Doney, W-76, and
Andrea Gosselin
Beth Doxide, W-75, and
Sara Harris
Duncan, W-86, and
Marjorie Drechsel
William, W-35, and
Deborah Duggan
Duke Energy Foundation
Donald and Wendelyn, W-48,
Duquette
Christopher Dyckman and Susan
Scotto-Dyckman, W-32
Elizabeth Eden, W-173
Lindsey Ekern, S-183
Peter and Kathryn Elefterakis
Virginia Engel, S-208
Kurt, W-1, and Mary Erickson
Kenneth Fabert and
Elizabeth Martin, W-28
Susan Farady, W-83
John and Shirley Farrington
Richard and Catherine Fay
Judith Fenwick
M. Charles Festa, C-195
Fidelity Charitable Gift Fund
Melanie Finn, S-224
Brannon, W-132, and
Amanda Fisher
Daniel Fitzgerald, C-203
Steven and Rita Fitzgerald
James and Elizabeth Flynn
Matthew Flynn, C-247
Patrick Flynn, S-218
Peter and Susan Forster
The Forster Family Foundation
Robert and Patricia Foulke
Francis Fruehstorfer
M. Graham Furlong, C-171
Richard Garcia and Jan Burry
Edna Gillespie
Vince Giorgi and Marcia Appel
Danielle Giroux, W-161
Andrew Goode, W-47

Ryan Gordon, W-169, and
Carolyn Maier
Samuel and Margaret Gray
Nicholas Green, S-234
Sarah Gross, S-186
Benjamin and Erin, C-142,
Gutierrez
Kenneth and Kathleen Haber
Jeannette Hall
Lance and Amy, C-116, Harry
Eric, C-172, and Cathleen Hartge
Tom Hazzard and Gillian Backus,
W-140
Jerome and Anne Heller
Douglas Hendren and Nancy
Beall Hendren, W-18
Bruce and Susan Herard
Peter Schultheiss and
Melanie Holland, W-103
Robert and Deborah Hopps
Andy Smith and
Meghann Homer-Smith, C-163
Steven Houang, C-247
Kimberly Hrycik, S-224
Edward and Dorothy Hudson
Steve, W-23, and Hilary, W-51,
Hudson
Susan Humphris
Benjamin, W-167, and
Christie Husa
Paul and Marjorie Inderbitzen
Dave Jackson
Michael Jacobson, W-72, and
Cara Berman
Sheryl Jagerson
Merrill and Lillian Jencks
Thomas Jester, W-94, and
Jennifer Giblin
Erik Johanson, C-198
Alexander and Jill Johnson
Matthew Jones and
Ginny Eckert, C-106
Susan Jones
John, W-66, and Denise Kelley
Martin and Kathleen Kelly
Patricia Keoughan, W-53
Amy Kimm, S-230
John and Louise Kingsbury
Nathan Kranes, C-149
Andrew Kurtz and Sarah Das, W-129
David Lamberger, C-112
Christopher, C-153, and
Elizabeth Lanoue
Neil and Amy, S-177, Larocca
Stephen, W-83, and Debra Laster
James Lazar, W-78, and
Carolyn Leep
Brian and Margarita Lessard
Brian, W-95, and Chinari Levy
Laura Lilly, S-235
Deborah Liptzin, C-165
J. Parke, C-100, and
Amy, W-93, Logan
Mark Longval, W-35
Clifford, W-22, and Randy Low
Benjamin Lummis and
Katrina Abbott
John and Patty Lummis
David and Katherine, C-121, Lund
Myles and Cornelia Lund
Christopher, W-48, and
Margaret Lynch
Maureen Lynch, C-195
Emily MacKinnon, W-165
Scott MacLellan, S-204
Edward and Grace Madeira

John Maguire and
Linda Cox Maguire
Craig, W-119, and Laura Marin
The Marks Family Foundation
The Martin Foundation
Justin, C-171, and
Jennifer Martinich
E. Dennis and Sandra McCarthy
Caleb McClennen, W-144
Wynn McCloskey, W-50
Kilian Schalk and Jennifer
McDermott, W-129
Matthew, W-123, and
Shannon, W-135, McKenzie
David and Laura McLean
Craig, S-212, and
Krystle, S-215, McMaster
John and Anita, W-33, Meissner
Mark Michelin and Sarah Clowes,
W-145A
Juliana Miller, W-178
Jim Millinger
Geoffrey and Kathleen Milstein
Morgan Stanley Smith Barney
Global Impact Funding Trust, Inc
Judith Morlan, W-152A
Alan and Jennifer, C-140, Mott
Richard Murray, W-71, and
Sara Nuciforo
Jennifer Nauen, W-92
Douglas Nemeth
Anne Nichols
Bradley Nicholson, C-210
Dennis and Sheila Nixon
Maureen Nolan, W-152A
Robert Nolan, W-50
Evan Oleson, C-231
Janice Olsen, W-17
Susan Papagiannis
Rafe and Kate, W-139, Parker
Sarah Parkinson, C-216
Jonathan and
Catrina, C-150, Parrott
Don and Melinda, W-35, Pearce
Christopher, W-6, and
Diane, W-16, Penn
Paul and Mary Perkins
Philip Petrone, W-150, and
Kara Lemma
Rachel Philbrick
Robert and Anne Pickart
Virginia Pillsbury, W-79
Charlie and Cecily Pilzer
Roger, W-113, and
Sandra Pinnicks
Julie Pivor
Adam Porter and
Elizabeth Jakob, W-63
Kenneth, W-43, and Judy Potter
G. Michael and Shannon Purdy
Ella Quintrell, W-41
Scott Rachlinski and Rebecca
Arenson-Rachlinski, C-106
Jason Rebillot and
Elizabeth Ellwood, W-162
Kimberly Reed, S-236
Dwight Reese, W-41
William and Karen Regan
Sara Rhoades
Leyana Romain, C-247
Hal, W-38, and Lisa Rose
Stephen Ruane, S-178, and
Lauren Gilbert, S-190
Carl Safina
P. Scott Sakamoto and
Lori Petitti, W-48

Jeremy, W-75, and
Dianne Salesin
Anne Samuel, C-159
Matthew Sarver and
Lauren Morgens, C-158
Jane Sattler
Peter and Karin Savio
Kenneth Schmitt
Allison Schumer, W-25
Schwab Charitable Fund
Robert and Stella Mae Seamans
Edward and Joan Shankle
Carolyn Sheild, W-77
Morgan Simmons, C165
Margaret Smith
Nathaniel Smith, C-222
Reid, C-161, and Franki Smith
Ian Smithgall, S-209
Thomas and Barbra Smithgall
Adam Woodward and
Valerie Solar Woodward, W-115
Bryan, C-183, and
Rebecca, C-183, Sparkes
Robert and Cynthia Spencer
Patricia Sprague
Fred and Kathleen Stadel
Margaret Stark-Roberts
Neal and Carol Steingart
Carl, W-84, and
Elizabeth, W-84, Stevens
Alton Straub, W-105, and
Jennifer DeVoe
Elizabeth Strojny, C-172 *
Thomas and Lisa Sturtevant
Paul and Lenore Sundberg
Juris Svarbergs and
Nancy Reyes-Svarbergs
Philip and Joan Swanson
Zoltan Szuts, C-164
Allison Taylor, S-186
Holly Taylor, S-212
John, W-35, and Elisabeth Taylor
Michael and Ann Taylor
Todd, C-104, and Ulrike Taylor
James Thomson, W-162
Gary, W-68, and Melanie Tisdale
Paul, W-11, and
Karen Toczydlowski
Stephan, C-142, and
Bonnie Tompsett
Greg and Mary Toney
Chris Tonkin and Sarah Bixler
Tulsa Community Foundation
Joseph Twichell
Robert, W-88, and Jill Ultan
The Vermont Community Foundation
Dennis and Gina, C-167, Voskov
John, C-113, and Susan Waldren
Daniel Walker
Douglas and Catherine Wall
Ryan, C-190, and Lindsey Walsh
Brian, W-114, and
Rebecca Watson
Thomas Weschler
E. Douglas and Barbara White
Anthony and Rhoda Whittemore
Charlie Wilber and Mollie Kabler
Anthony and Leslie, W-36, Will
Thomas and Alice Willey
Richard Wilson
Theodore and Linda, W-52, Witte
Eric and Sandra Wolman
Kristina Wood, W30
John and Pauline Woodward
George and Katharine Woodwell
Keith and Kathryn Zammit
Keith Zeitlin and Patricia Buckley,
W-147

New Summer Sessions

Two new Pacific SEA Summer Sessions debuted in 2014. These programs were developed in response to the growing number of undergraduates looking for academic credit during the summer.



Protecting the Phoenix Islands (PIPA)

This 8-week summer session welcomes students to explore one of the last coral wildernesses on earth through one of two academic tracks: science or policy. The Phoenix Islands comprise the Pacific's largest marine protected area (MPA) and were recently named a UNESCO World Heritage Site. Students join marine scientists from SEA, the New England Aquarium, and Woods Hole Oceanographic Institution on one of the first research voyages to the Phoenix Islands Protected Area (PIPA), a region of the world which remains largely unexplored and unvisited.

During the first two weeks on shore in Woods Hole, students begin a survey of large-scale marine conservation efforts around the world. They use PIPA as a case study for the state of current international ocean conservation efforts while developing their own research project in either ocean science or conservation policy.

Students join the SSV *Robert C. Seamans* for a six-week research voyage from Hawaii to American Samoa. They first cross the Equator in a 2-week, 1,600 mile voyage to the Phoenix Islands. The next three weeks are spent in PIPA, documenting the oceanic ecosystem around this archipelago: something that has only been done once before. Working side by side with experts, students provide real-time data that lays the groundwork for an effective conservation plan. A final leg to American Samoa rounds out the voyage.



Aloha 'Aina: People and Nature in the Hawaiian Islands

Aloha 'Aina, a Hawaiian conception of 'love of the land,' describes a deep and enduring relationship between Hawaiian people and the land and ocean resources that sustain them. In this service-based program, students see Aloha 'Aina in action, combining traditional and western environmental approaches, working with community leaders, ocean resource managers, and coastal stakeholders as they implement actions to sustain marine environments. The program weaves together traditional Hawaiian knowledge, values, and practices with contemporary western science, instrumentation, and ecosystem management.

Students spend just over two weeks on shore at Hawaii Pacific University while conducting field work at multiple sites throughout the islands. They then travel throughout the Hawaiian archipelago aboard the SSV *Robert C. Seamans* for ten days, engaging with community-based projects that are developing innovative solutions to land-based pollution, over-fishing, and climate change adaptation. Students develop scientific expertise on the key biophysical processes that support ocean resources and coastal cultures, and a rigorous understanding of the unique combination of social, ecological, and policy dimensions of marine resource management emerging in the Hawaiian Islands.

A week-long final symposium at Hawaii Pacific University's Hawaii Loa campus allows students to present their policy recommendations to a panel of experts while wrapping up the program.

Thank you! SEA is very grateful to Dr. Lew Stern of Stern Consulting for his generous work with SEA leadership during the exciting launch of our new programs and destinations in 2014.



Tall Ships America Selects SEA Semester: The Global Ocean

At its annual conference in Philadelphia held early in February, Tall Ships America selected SEA Semester: The Global Ocean as its 2014 Sea Education Program of the Year. This prize is awarded annually to a program offered by a current member of Tall Ships America which has significantly contributed to the educational credibility of programs under sail. SEA's President Peg Brandon, W-48, was at the conference and accepted the award on SEA's behalf.

Shipboard Science

By Jason Clermont



Above: Students bring the shipek grab—containing a seafloor sediment sample—back on board the SSV Corwith Cramer.

Below: A student under the careful watch of Assistant Scientist Abby Cazeault, C-226, readies a Sea Bird Electronics CTD for deployment on SSV Robert C. Seamans.

Bottom: The water sampling “carousel” complete with oceanographic sampling sensors and a set of Niskin water sampling bottles is deployed from the SSV Corwith Cramer.



Even after being at Sea Education Association for close to two years, I am still amazed at the amount of science we can pack on board the SSV *Corwith Cramer* and the SSV *Robert C. Seamans*. Working alongside SEA’s talented scientists, SEA Semester students have the opportunity to deploy and utilize a variety of modern (as well as tried-and-true) oceanographic gear from a truly unique platform.

The *Corwith Cramer* and *Robert C. Seamans* are rare breeds indeed, being sailing vessels that also boast a full complement of oceanographic instrumentation and equipment—most of which is the same as found on board other world-class research vessels. The types of oceanographic equipment SEA Semester students are exposed to runs the gamut from simple plankton nets to complex profiling sensors. Acoustic Doppler Current Profilers (ADCP), sub-bottom profiling systems, a profiling “carousel” containing instruments capable of logging various physical and chemical attributes as well as “Niskin” bottles for sampling water at specified depths, sediment sampling equipment, an underwater HD camera-equipped ROV, and various sampling nets are but a brief introduction to the suite of oceanographic sampling equipment carried on board SEA vessels.

Our vessel-based laboratories are also fully functioning scientific labs with various equipment and instruments for in-situ analysis, as well as data recording and analysis. Wet chemistry analytical techniques, analysis of primary productivity, and logging of data via computer-based software suites all take place in the cozy confines of our floating laboratories. The labs on both ships also feature a continuous surface seawater sampling system that provides real-time data and logs data on a variety of oceanographic parameters once every 60 seconds!

The deck machinery—equipment like the hydrowinch, the hydrowire, J-frame, and BT-winch—also plays a critical role in our science operations. Before coming to SEA, I had the opportunity to go to sea as part of the science team on research vessels from other institutions. Aside from handling the actual science gear, the science party was fairly limited in what role we could play in deck operations. We certainly were not permitted to operate deck gear such as the J-frame or hydrowinch. It never ceases to amaze me that during a SEA Semester, not only do scientists get the opportunity to learn to operate these pieces of equipment, but so do students!

The ability to expose SEA Semester students from a variety of different disciplines to world-class oceanographic research has many advantages for both SEA and the students.

Jason Clermont is Sea Education Association’s Technical Science Coordinator. He holds a M.S. in Biology from East Carolina University and has a keen interest in all aspects of marine science. He has spent an extensive amount of time on the water conducting science from a variety of platforms—from small skiffs in the sounds of North Carolina to large commercial fishing vessels in the Bering Sea.



SSV *Corwith Cramer* SSV *Robert C. Seamans* Oceanographic Equipment List

Winches / Wire Handling

Markey DESH-4 Electric Hydrographic Winch with 5000m 1/4" 3x19 wire rope
Markey DEBT-3 Auxiliary "enhanced BT" Winch with 1/8" wire rope
Hydraulic J-frame and Dynacon electronic metered wheel

Acoustics

Knudsen Model 3260 Chirp sub-bottom profiling system, 2-7 kHz;
Acoustic Doppler Current Profiler (RDI Ocean Surveyor 75kHz)
Hydrophone

Physical / Chemical / Biological

Water sampling Carousel- Sea Bird Electronics(SBE) 32-16 with:

- 2.5-L Niskin Water Sampling Bottles
- SBE 90208 Auto Fire Module
- Seabird SEACAT Profiler Model SBE 19plus v.2 CTD
- PAR sensor
- Seapoint in-vivo chl-a fluorometer
- Wet Labs CDOM fluorometer
- Wet Labs transmissometer
- SBE43 oxygen sensor

RBR towed CTD with optional Sea Ppoint in-situ fluorometer
YSI handheld Salinity-Conductivity-Temperature meters
Ocean Optics USB2000 digital spectrophotometer
Aquatix Hydroview ROV (200ft rating, color cameras and HD video)
Secchi Disk

Nets

SeaGear 200, 333, 1000 μ m mesh Plankton nets
SeaGear 333 μ m mesh Neuston nets (1m wide by 0.5m high)
SeaGear 63 μ m Phytoplankton nets
Tucker Trawl multiple opening/closing net
MOCNESS with 9 net, 333 μ m mesh, 1/4 m2 opening
(*Robert C. Seamans* only)
Star-Oddi Centi-TD (temperature/depth) logger

Sediment

Shipek Sediment Grab
Gravity Corer
Fisher Sediment Scoop

Lab Equipment

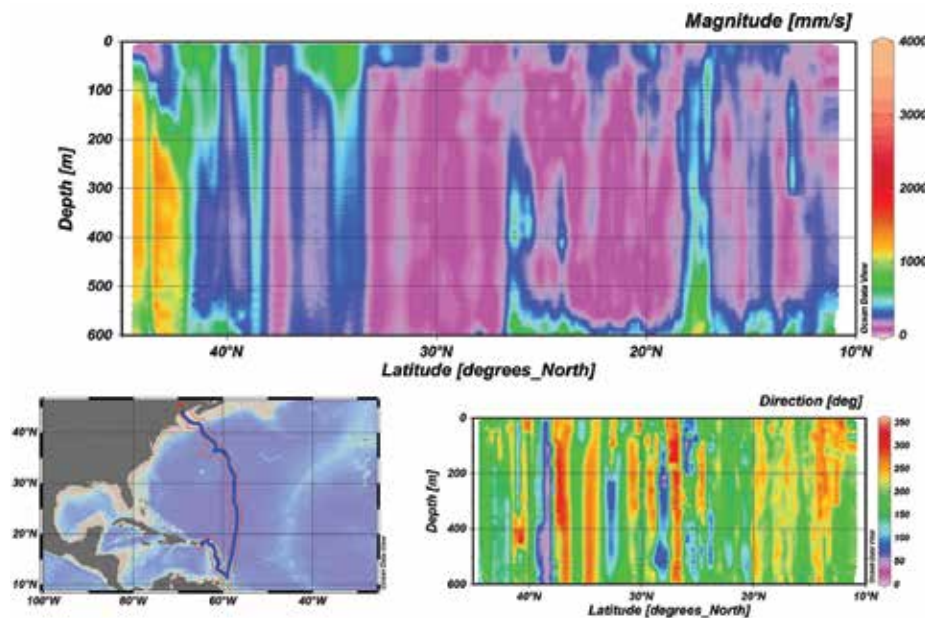
Zeiss stereo dissecting scopes
Zeiss/Nikon compound scope with epifluorescence capability
Motic Camera for digital photomicrographs
Orion 3-star benchtop pH meter
Clean flowing seawater system with:

- SBE45 thermosalinograph
- Seapoint chlorophyll-a fluorometer
- Wet Labs CDOM fluorometer
- Wet Labs Transmissometer

Desktop and laptop computers, printers, wireless network, automatic data backup

Such exposure can inspire students towards a career in marine science, as well as motivating those not previously inclined to study marine science to take up the issue or incorporate lessons learned into future career paths. Exposure to how marine science is conducted can also aid in disseminating ocean-related information to the public—a role of interest to SEA Semester students.

What does the future hold for scientific capabilities on board the *Corwith Cramer* and *Robert C. Seamans*? New cruise tracks, coupled with strategic partnerships such as the Ocean Health Index, have opened up new and exciting prospects for collaboration, educational opportunities, as well as novel oceanographic investigations. We are constantly looking towards the future to identify new and better ways SEA can play a role in identifying and overcoming the challenges facing the world's oceans—and evolving scientific capability is likely to play a role in these new directions. Be it a new pH probe to measure the extent of ocean acidification at depth or a more intuitive controller for our ROV, we are constantly striving to keep SEA at the forefront of oceanographic science to inspire and empower our students. ■



Graphical representation of Acoustic Doppler Current Profiler data showing the magnitude of ocean currents encountered during a SEA Semester cruise from Rockland, ME to St. John, USVI.

Hand Over the Watch!

Share your love of SEA and SEA Semester by "handing over the watch" to the next generation of SEA alumni!

Do you know a college or high school student who is bright, inquisitive, loves the ocean and has a thirst for adventure?

Cut out and pass along the below section to help us spread the word!



CUT HERE

SEA Semester



SEA Semester®

Environmental Studies in Woods Hole & at Sea



Hands-on, field-based programs for all majors!



Semester and summer programs



Boston University credit
Coursework in subjects including Marine Science, Environmental Studies, Leadership, Humanities, Social Sciences, Cultural Studies, & Public Policy.



Exciting ports & destinations

Fiji, New Zealand, Tahiti, Spain, Ireland, the Caribbean, Transatlantic Crossings, and more!



SEAScape

SEA Science on the Cape
Shore-based summer programs for high school students



Learn more: www.sea.edu

800-552-3633 • admissions@sea.edu



Knowing the Ropes

By Richard W. Murray, W-71



When I arrived in Woods Hole in the summer of 1983 for W-71, I had little idea of what awaited me. I was familiar with Woods Hole Oceanographic Institution (WHOI) and the general community since my family had been traveling to and from Martha's Vineyard for many summers. And, as a Geology major at Hamilton College, I had already decided to pursue "soft rock" geology while in college, ideally involving the ocean in some way.

But I had little expectation of the SEA experience itself. I had read the brochures—this was, of course, long before the internet—and had already applied, so I knew the generalities. Cory Cramer (founder of SEA) was family friend as well, so my family knew the overall picture. Anything beyond that, however, was unknown. Little did I know that SEA would change my life as much as it did and that, virtually my entire life since then, SEA would figure so prominently in my personal and professional growth.

SEA alumni are everywhere in the ocean sciences and in the general populace as well. I've been stopped on the street by people who see my SEA baseball cap and tell me that either they or their son/daughter "did SEA" and how much better off they are for it. At every step of my career I have interacted with SEA alumni, one of my nephews is "one of us," and my growing children are destined to be SEA alumni in some 10 to 15 years.

After graduating from Hamilton and nearly continuously dreaming of being at sea while watching the snow fall in upstate New York, I moved to pursue my PhD at UC Berkeley. While at sea conducting part of my PhD research, I drew heavily upon my SEA experiences. In fact—and this is still true today—the strong sense of self from having successfully completed SEA's challenging academic and sea-going experience was essential for my entry into the sea-going oceanographic community.

I have been a professor at Boston University (BU) since 1992 and spent a cumulative total of two years on various research cruises—since my SEA experience was more than 30 years ago that means nearly 7% of my life since has been spent out of sight of land. Time at sea includes two wonderful trips on the *Cramer* as Co-Chief Scientist on special courses for BU marine science majors. On one trip, Dr. Kara Lavender Law, sea-going SEA faculty, re-instilled in me a passion for teaching—simply by being around her—as she and I taught and sailed side-by-side. Captain Rappaport and Mary Malloy further reminded me how SEA can reach out and influence students in ways at once overt and subtle. On another research cruise I was fortunate to be Co-Chief Scientist on the *JOIDES Resolution* for Integrated Ocean Drilling Program Expedition, targeting the climatic evolution of the Asian Monsoon. Problem-solving on the fly while responsible for a research mission involving over 100 persons drew upon the same skills first learned on the *Westward* off Sable Island. By a quirk of fate, for my most recent cruise I was the Chief Scientist on WHOI's famed RV *Knorr* on her last full scientific expedition. Last fall, *Knorr* sailed in and out of Woods Hole and, in so many ways, aspects of my sea-going career have not strayed far at all. Indeed, on *Knorr* during that cruise were four other fellow SEA alumni.

I am currently on leave from BU and spending several years in Washington, DC at the National Science Foundation (NSF) where I am the Division Director of Ocean Sciences. In this capacity, I lead a team of dedicated professional ocean scientists who oversee more than \$360M of research activity each year. Being responsible for a budget of that scale is not without challenges and, at times, is not for the faint-hearted, particularly in this political and financial climate. Once again, my SEA experience some 30 years ago prepared me well. "Situational awareness," "knowing the ropes," "one hand for you, one for the ship," these apply as much in the boardroom as they do at sea. SEA truly prepares one for life, wherever it may lead. ■



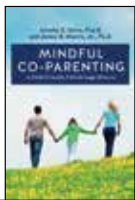
FOLLOWING SEA
 Winter/Spring 2015
 Sea Education Association, Inc.
 P.O. Box 6
 Woods Hole, Massachusetts 02543



NON PROFIT
 ORG
 U.S. POSTAGE
 PAID
 MAILRITE, INC.

Recycled Chlorine-Free Paper / Vegetable based Ink

OUR FAVORITE TITLES



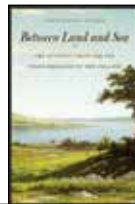
Jeremy Gaies, W-61
Mindful Co-Parenting



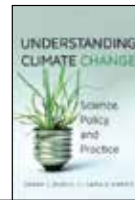
Luanne Rice, W-25
The Night Before



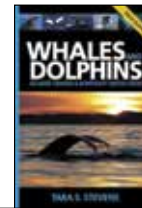
Ellen Prager
 Former
Oceanography
 Faculty
Shark Rider



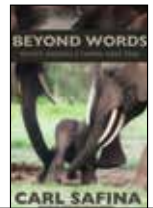
Christopher Pastore, C-141
Between Land and Sea



Sara Harris, Former
Oceanography
Faculty
 co-author
Understanding
Climate Change



Tara Stevens, C-203
Whales and Dolphins
(Field Guide)



Carl Safina
SEA Overseer
Beyond Words

ARMIN E. ELSAESSER FELLOWSHIP OPPORTUNITY!

SEA is pleased to announce we are accepting preliminary proposals for the 2015-2016 Armin E. Elsaesser Fellowship. The Fellowship program, established in 1987, is in memory of Armin E. Elsaesser III—sailor, educator, and adventurer—who sailed on several *Westward* cruises and taught Maritime Studies on shore. With his strong curiosity and sense of adventure, Armin inspired SEA students and staff alike.

The goal of the Armin E. Elsaesser Fellowship is to help one or more individuals each year to follow a dream that has been elusive because of the demands of work or study. The successful project will involve active investigation into an area of personal interest and should reflect a creative and independent approach to the pursuit of knowledge. SEA alumni, faculty, staff, and past employees are eligible for the Armin E. Elsaesser Fellowship. Awards range from \$3,000 to \$7,000 for projects that are at least one month in duration and involve any marine or maritime field that is not directly related to the applicant's current professional activities. Winners will be chosen by a competitive selection.

Preliminary proposals should be no more than two pages and should outline the project and preliminary budget. Applicants should also include a short biographical sketch. Proposals must be submitted by June 30, 2015 to the address below. SEA's Fellowship Committee will review the proposals and a small number will be selected for submission of a more detailed proposal. The final decision will be announced in the fall of 2015. Proposals should be emailed to elsaesser@sea.edu or mailed to Elsaesser Committee, SEA, PO Box 6, Woods Hole, MA 02543.

Please support the 2014-2015 Annual Fund www.sea.edu/give