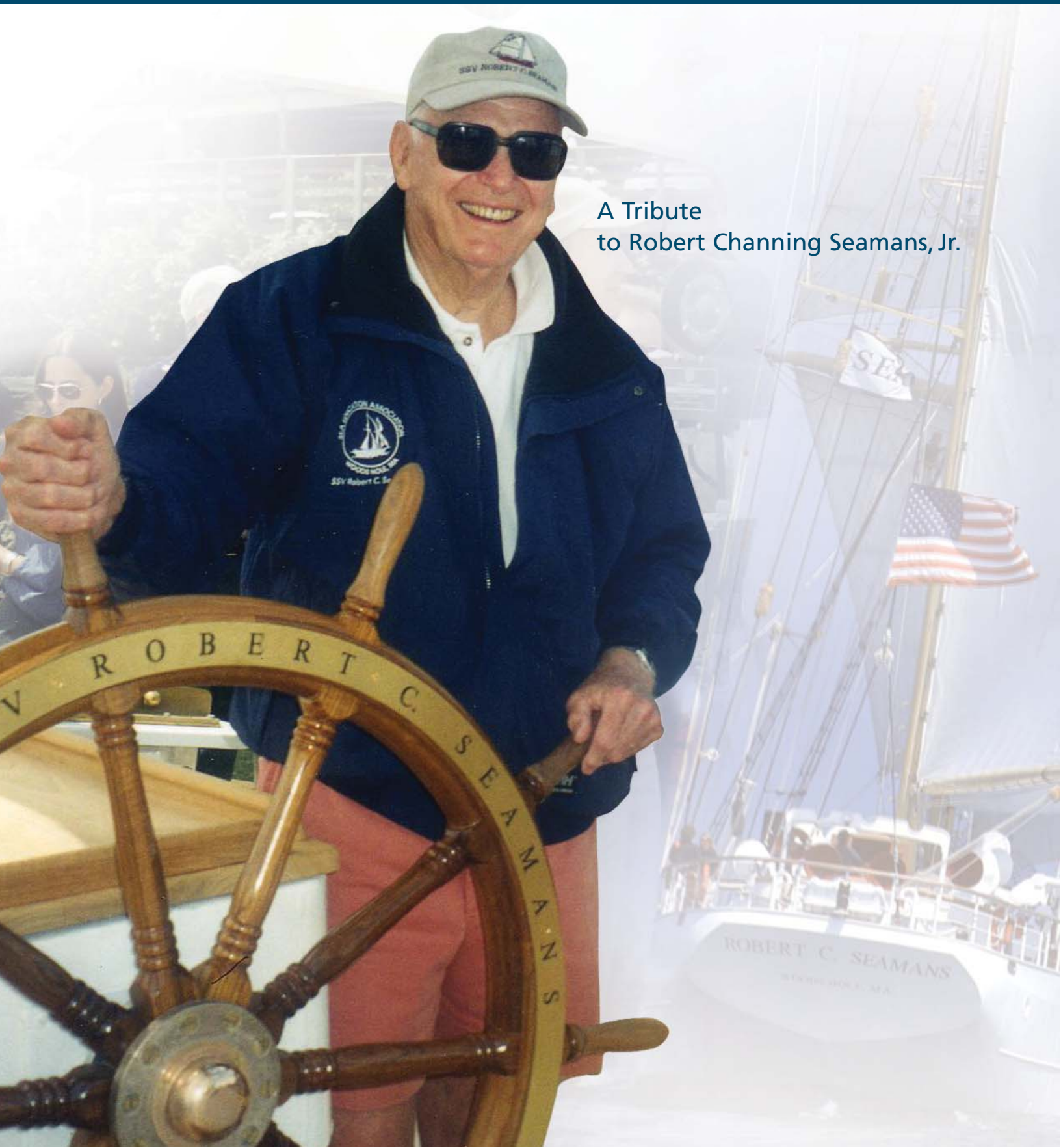


Celebrating over 1,000,000 miles sailed

FOLLOWING SEA

2007-2008 Annual Report Issue

Winter/Spring 2009



A Tribute
to Robert Channing Seamans, Jr.

Cover Story

- A Tribute to Robert Channing Seamans, Jr.**1
- Rafe Parker's Reminiscences of Bob Seamans**4

Features

- W-1 Crossing Paths**18

In Every Issue

Passages

- Events and News of General Interest5
- Around the World and in Space17

Science Corner

- Climate Science at Sea20

Special Report

2007-2008 Report to Donors

- From the desk of Board Chair, Linda Cox Maguire6
- Annual Report7

NOTE: 'Scuttlebutt' can now be found online at www.sea.edu. Log in to the SEA *Alumni Directory* to read news from classmates around the world.

See SEA on Facebook!



Please become SEA's fan on Facebook.

Search for the 'Sea Education Association/SEA Semester' page and pick the site with the SEA logo. From

there view short versions of the SEA video, and great fan photos of recent student cruises. Post your SEA Semester photos or comments on the experience. **There are already over 700 SEA fans since the page's creation. You can be next!**

Following SEA Winter/Spring 2009

Editor: Jan Wagner
Design: MBDesign, mbdesign-us.com

Photography: Jay Bercaw, Courtesy Sean Bercaw, Courtesy Al Hickey, Shelly Oberman, Courtesy NASA, Joseph Seamans, Amy Suida, Laurie Weitzen, Jan Witting. Photo at right ©Neil Rabinowitz



Following SEA is available online. If you'd like your prints, slides, or digital images considered for the next issue contact: Kerry Hannigan, ext. 20 or khannigan@sea.edu.

Sea Education Association, Inc., PO Box 6, Woods Hole, Massachusetts 02543 Phone 800-552-3633 Fax 508-457-4673 www.sea.edu

ROBERT CHANNING SEAMANS, JR.

October 30, 1918 – June 28, 2008

Bob Seamans was closely associated with Sea Education Association for over 30 years. He was recruited to serve on SEA's Board by James Madden in 1977, and was Board Chair from 1989 to 1993. The lecture hall in the Madden Center on the Woods Hole Campus is named for Dr. Seamans, and SEA's newest vessel was named in his honor in 2001. This year the SSV *Robert C. Seamans* embarked on its eighth academic year of carrying students to sea to study the oceans.



“HUMBLE AND UNASSUMING”



ON NOVEMBER 3, 2008 Board Chair Linda Cox Maguire read this into the record at the Semi-Annual Meeting of the Corporation of Sea Education Association.

On June 28, 2008, we were saddened to learn of the death of Robert C. Seamans, Jr. SEA lost an emeriti trustee, an inspirational leader, and a loyal supporter and friend. Bob had been involved with SEA since he was recruited by Jimmy Madden in 1977 and, as recently as last November's Semi-Annual meeting, was an active and enthusiastic participant in its governance. He was a man of great accomplishment and SEA was fortunate to have had his leadership as Board Chair from 1989 to 1993.

During his term as Board Chair there was a marked growth in SEA's endowment and he established a new precedent by setting a term for the position of Board Chair. All who worked with Bob knew him to be thoughtful, thorough, analytical and smart. But he will be remembered most as an optimistic, a gentle and a compassionate man. He was modest despite all his achievements and required quite a bit of persuasion before he agreed to the naming of SEA's newest vessel.

We are honored that he agreed and glad that the SSV *Robert C. Seamans* that bears his name will carry so many students to sea to study the oceans. So rather than observe a moment of silence in his memory, let us celebrate by saluting him today with a hearty round of applause.



EXCERPTS FROM MEMORIAL SERVICE FOR ROBERT CHANNING SEAMANS, JR.

Reprinted with permission of the speakers.

Pictured above L-R: June 23, 2001, Gene and Bob Seamans at the Commissioning in Tacoma; the sailing dory, Gene, and the SSV Robert C. Seamans in Tahiti; Gene and Bob at the Trustees commissioning dinner on June 22, 2001; Gene prepares to christen the new vessel with crew members (l-r) Eric Gura, Shannon Wilson McKenzie, W-135, Jay Amster, C-166 and Chris McGuire, C-120.

July 2, 2008
St. John's Episcopal Church Beverly Farms, MA

BOB WAS A SKILLFUL AND COMPETITIVE racing captain. I was delighted to be his navigator on several races. At the time of his first Marblehead to Halifax race, Bob was Deputy Administrator of NASA working with the Apollo program while a satellite navigation system, now known as GPS, was being developed. After two days of fog and clouds, we were off Cape Sable at the southern tip of Nova Scotia with only a rough dead reckoning position. Fortunately the weather cleared sufficiently to enable me to get a few evening star sights. As I was computing our position with the Nautical Almanac and tables, Bob, sensing my feeling of self importance, looked over my shoulder and, with his smile and good humor, said, "Paul, you better enjoy your celestial navigation while you can, because soon you will be obsolete!"

—Paul Perkins, SEA Trustee Emeritus

TWO DAYS BEFORE DAD DIED, I had a chance to chat with him. He described what a wonderful career he had with NASA, the Air Force, the Carnegie Institute, National Geographic, Academy of Engineering, Sea Education Association, MIT and Harvard. His strong family support, especially Gene, his wife, made all this possible. No matter how busy Dad was, he always found time to be with his family.

—Robert Seamans III (Toby), oldest son of Bob and Gene Seamans

EVEN IN HIS FINAL MOMENTS, his optimism shown brightly, giving reassurance, as it always did, to those of us around him. In the face of a battle he knew he could not win, his...no-nonsense pragmatism and his determination served him well. It made his life worth living.

—Joseph Seamans, middle son of Bob and Gene Seamans

“HIS STRONG FAMILY SUPPORT, ESPECIALLY GENE, HIS WIFE, MADE ALL THIS POSSIBLE.”





“HE LIVED HIS LIFE WITH OPTIMISM AND JOY.”

ROBERT C. SEAMANS, JR., Trustee Emeritus and former SEA Board Chair, was born in Salem, Massachusetts on October 30, 1918. He attended Lenox School, received his BS from Harvard and both an MS in Aeronautics and PhD in instrumentation from MIT.

Dr. Seamans helped lead the National Aeronautics and Space Administration (NASA) during the years after 1961 when President John F. Kennedy declared his intent to land Americans on the moon. He was instrumental in the 1968 decision to send Apollo 8 to the moon, despite some staff objections, and it was this successful mission that led to the lunar landing in 1969.

He remained a consultant to the NASA administrator after returning to MIT in 1968 as a visiting professor. After serving as secretary of the Air Force from 1969 to 1973, he was then named by President Ford as administrator of the Energy, Research and Development Administration in 1974. Dr. Seamans became dean of the School of Engineering at MIT in 1977 and continued to teach there even after his retirement in 1984.

A family man, he took great pleasure from time spent with his wife of 66 years, Gene, and their five children. He loved tennis and he loved sailing, both cruising and racing, according to his friend of 50 years, SEA Trustee Emeritus Paul Perkins.

It was Perkins who helped overcome fundraising concerns and issues of modesty in persuading Bob to permit SEA to name the new vessel the SSV

Robert C. Seamans. Now the *Seamans*, affectionately referred to by the Seamans family as “The Bob,” carries a sailing dinghy fondly named “Gene.” A large group of the Seamans family attended the 2001 commissioning of the boat in Tacoma, WA where Dr. Seamans spoke and presented the ship’s library with a signed copy of his autobiographical book, *Aiming at Targets*.

Early during 2003, Bob and Gene Seamans, along with son Joe and grandson Michael traveled, at SEA’s invitation, to Tahiti to sail on the new vessel. During that trip, Joe remembers that his parents, then in their 80’s, were offered the option of standing watch but there was no question that they were going to do it, sometimes getting up in the middle of the night to do so.

Bob Seamans was actively involved with SEA until six months before his death on June 28, 2008. He attended both the June 2007 Annual Meeting in Woods Hole, and the November Semi-Annual meeting that same year, giving a spontaneous inspirational speech to Trustees, Overseers, faculty and staff about opportunities in the future. He will be missed.

“My brother Bobby was an ever optimist, so exemplified by his confidence that things would work out. When he was eight, he bought a raffle ticket for a toy barn, and came home and announced to his mother that he had won the barn. His parents tried to explain that he only bought a ticket and he’d be lucky if he won. He insisted on being at the church for the drawing. As he and his father walked in, they announced Bobby Seamans was the winner.”

—Donny Seamans, as told to those gathered at Bob’s memorial

WORDS BOB LIVED BY

*Life is an arrow. Therefore you must know
What mark to aim at and how to use the bow.
Then draw it to the head and let it go!”*

—Henry van Dyke, poet and clergyman

RAFE PARKER'S REMINISCENCES OF BOB SEAMANS

Jimmy Madden introduced Bob to SEA in the late 70s. Jimmy lived on Boston's North Shore near Bob and both were keen sailors, close friends and members of the CCA.

Though Bob stayed in the background for a number of years early during my tenure at SEA, he attended all the major board meetings and showed a strong interest in the organization's growth. In the mid 80s Townie Hornor stepped down after a long stint as Chairman. Ann Brewer, a long time friend of the Seamans family, took over with the clear understanding that she was simply an interim Chairman.

After he joined the Executive Committee, it was increasingly clear that Bob just might agree to take over from Ann as the next full term Chair. He was approached and, after careful consideration, Bob accepted.

From this point onwards, Bob made it clear that his goal was to "institutionalize" the organization's governance. The structure, membership and goals of the Board's standing committees were reviewed and, where appropriate, re-organized. He led the review and revision of the by-laws. He wanted to bring SEA more in line with institutions of higher education. He worked to have research project guidelines revised to have more academic credibility and relevance. He changed my title of Executive Director to President and, most importantly, instituted clear guidelines as to how the President should report to the board, including establishing a carefully thought-out process for conducting a performance review. Bob wanted to know if I had a complete physical on a regular basis. I said I couldn't remember when I last had one. "You can't run SEA unless you have a regular medical check-up," Bob insisted.

Bob wanted to ensure that the Board was well connected to the numerous functions of running SEA. He encouraged the staff and faculty to engage the trustees and help them better understand how SEA's mission was being implemented. The meetings became more interactive.

It was important for him to know what I was going to say. He would review my report for each meeting. Inevitably, I would build my report around some philosophical idea. At first, it was hard for him to understand why I would approach the report that way. I explained there was so much factual data being fed to the board at these meetings, there had to be a way to talk about our educational mission in more conceptual, philosophical terms. He eventually came to enjoy "Father Parker's sermons," as he called them.

Bob was very concerned that I take my allotted vacation time, something that was not so easy to do. With this in mind, he invited Kate and me to join him and Gene for a week's sailing on the Chesapeake aboard *Viva*. We accepted with much enthusiasm.

Aboard *Viva*, we had a wonderful time exploring the creeks of the Chesapeake. I had come to know those waters well so was able to introduce Bob and Gene to some quiet anchorages they hadn't known. But, what has stood out most in my memory of

that trip was the joy of sharing with Bob our passion for jazz. Amidst the cries and squabbles of birds seeking the best perch for the night, and with a drink in our hands, we would watch the sunset listening to the best of John Coltrane, Louis Armstrong, Charlie Parker, Duke Ellington and Fats Waller. Billie Holliday's rendition of "Solitude" will always remind me of those magical evenings.

Well, it was not too long before we were campaigning for another vessel. By this time Bob had stepped down as chair. Others had taken over. But his interest in SEA continued to be as strong as ever. Although we had named the lecture hall in the Madden Center after him, the thought of having his name on the new ship was always at the back of my mind. It was clear that she should have a name worthy of her. It was also clear that the campaign needed an infusion of fresh blood if we were to meet our fundraising goal.

It was about this time when Paul Perkins, a long-time member of the Board and one of Bob's closest friends, called from Florida. He said that he and Bob were participating in their annual tennis tournament and he was wondering if we would ever consider naming the new ship after Bob. "Of course!" I said. "I've often thought of the idea. Would Bob be interested in having his name on the boat?" Paul's response was, "I don't know, but you might try asking him. Shall I put him on?" After some silence, Bob came to the phone. "How is it going, Rafe? You should be down here having fun!" I put the question to him, "would you seriously consider having your name on the boat?" "But I'm not dead yet!" was his reply. "I thought you might enjoy the pleasure before it was too late" was mine. "Let me think about it. I will get back to you!" The following morning he called back to say that it would be an honor to have his name on the boat. "Now I suppose you are going to want a list of my family and closest friends." "That would be a good place to start," I replied with a great sense of relief. We talked a little more about the vessel as well as his desire to have the name include his middle initial. Later, Bob and Gene worked together



Robert C. Seamans, Jr.; Bob Seamans and Rafe Parker at the commissioning, June 23, 2001

REMINISCENCES *continued*

in compiling the list of names and addresses of all their friends: among them were two U.S. presidents and a First Lady. Both Bob and Gene remained intimately involved throughout the remainder of the campaign.

Gene was invited to christen the SSV *Robert C. Seamans* with the traditional bottle of champagne at her launching. I received several excited calls from her to let me know that she was practicing breaking a bottle over the blade of an old plow at the bottom of their garden. She had been successful three attempts out of four. Unfortunately, when the event came and she was primed to strike the bow with a bottle of the best champagne, the vessel moved. Gene's bottle glanced the bow but didn't break. Later, with the ship alongside, she stepped into the vessel's gig, later named *Gene*, and broke the bottle over the ship's bow.

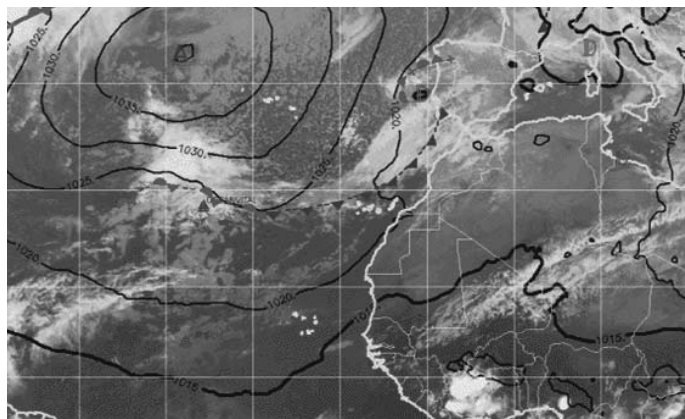
I was present at SEA's November 2007 semi-annual board meeting – the first since leaving the organization four years before. Bob was also attending the meeting along with board member Tom Weschler. It was to be Bob's last. Tom had reached his 90th birthday and Bob was in his 89th year. The occasion was an uplifting, nostalgic one for me. I made some remarks about the fact that these two gentlemen had brought their own enormous breadth of experience and service to their country to help further SEA's mission over many wonderful years. At the end of the meeting, Bob came over to me and said, "You know, Rafe, we've really missed Father Parker's sermons!"

—Rafe Parker, President Emeritus
September 2008

PASSAGES

continued on page 17

FOLLOWING SEA AROUND THE WORLD & IN SPACE



Rich Wilson Sails Around the World Solo

SEA Trustee, Rich Wilson retired from the SEA Board for the 2008-2009 year because he planned to solo sail around the world on a course that takes three months to complete. Participating in the Vendée Globe, Rich was the only American in the race and was also the oldest sailor at age 58.

Onboard the *Great American III*, Rich sailed from Les Sables d'Olonne in the West of France, around the Cape of Good Hope, east across the Indian Ocean, skirting Antarctica, around Cape Horn, and headed back up to Les Sables facing strong headwinds. He is only the second American to complete the Vendée.

Since beginning the race, Rich posted logs, photos and podcasts on his website www.sitesalive.com where there is also a question and answer feature and essays written by a team of experts.

On March 10th he crossed the finish line, completing the 24,840-mile Vendée Globe solo non-stop round the world race in ninth place. He finished in 121 days, 00 hours, 41 minutes and 19 seconds after leaving Les Sables d'Olonne on Sunday November 9th and averaged 9.84 knots on the water covering 28,590 miles.

While nineteen of the 30 skippers who started from the Vendée start line on November 9th had to retire from the race, the most grueling challenge in solo ocean racing, Wilson was described as having "stuck rigidly to his watchwords of safety and conservatism, showing huge determination to complete the course as the pinnacle of a sailing career which already included three ocean passage records."

SEA congratulates Rich on this amazing achievement.



SEA Flag Travels into Space

Former SEA Assistant Scientist, Richard R. Arnold II, now a NASA Astronaut, is assigned as a mission specialist on *Discovery* which launched on March 15, 2009. Ricky was an assistant scientist on W-126A/B and on W-127's trip north from Miami to Woods Hole. He also served as visiting scientist for Class 134A in 1994.

This mission will deliver the final pair of power-generating solar array wings and truss element to the International Space Station. The arrays will provide enough electricity to power science experiments and support the station's expanded crew of six. Altogether, the station's arrays can generate about 120 kilowatts of usable electricity, enough to provide about 42 2,800-square-foot homes with power.

The 14-day flight will include four spacewalks, lasting about 6.5 hours each, to help install the S6 truss segment to the right side of the station. STS-119 is the 125th space shuttle flight, the 28th flight to the station, the 36th flight of *Discovery*, and the first flight in 2009.

"The astronauts of *Discovery*'s mission will take objects into orbit that mean a lot to them, but also many that are symbolic of larger causes, goals and expectations," according to NASA's website. Most of the items will remain tucked in lockers inside *Discovery* while the crew goes about its tasks. Among the items is a SEA flag carried onboard by Ricky Arnold who contacted SEA to request an item to take on the mission.

According to the NASA site, "STS-119 spacewalkers Richard Arnold and Joseph Acaba, both former teachers, will 'fly' mementos, such as small flags, that represent some of the schools where they taught." The flag will be returned to SEA at the conclusion of the mission.

2007-2008 ANNUAL REPORT



Linda Cox Maguire, Chair
Board of Trustees, February 2009

We are grateful to each donor listed in this report for the part you played last year to help us build a strong foundation as we approached these challenging times.

You will be glad to hear that SEA is serving students at the highest level of quality and safety – continuing its strong tradition as a superb off-campus program. As our nation – and the world – slip into a deep recession, the challenges associated with our commitment to excellence are becoming increasingly great.

The problems we face are shared throughout higher education. Endowments have suffered, reducing resources to fund scholarships and support budgets; expenses have risen; and families are retrenching financially, waiting for these difficult times to pass. We lost nearly 20 enrolled students this past fall after the economy took its dramatic, downward turn, largely because of their parents' concerns about costs.

We seem to have steadied this initial market reaction. We have made an even stronger case for the value of SEA, and we are doing all that we can to reduce the strain on families through financial aid.

In order to sustain this commitment, we are turning to our dedicated alumni and friends. We will be reaching out to you, asking that you help us help students and reward the hard work of our faculty, staff, and crew.

So, we are designing new academic programs, welcoming outstanding students, and carefully tending to our ships. An exciting strategic plan we just completed in June is guiding us toward a point on the horizon that is directed by both what we hold most dear in our mission and what we find most compelling about serving students in the future.

We hope that you will help us get there.

Officers

Linda Cox Maguire, Chair
Richard Burnes, Vice Chair
Edmund Cabot, Vice Chair
Richard Murray, W-71, Vice Chair
Jacob Brown, Treasurer
Peter Ellis, Clerk

2008-2009 Trustees and Overseers

Trustees

W. Jeffrey Bolster
Walter Brown
John Bullard, ex-officio
Levin Campbell, W-60
Richard Chandler, W-07
Jamie Deming, W-14
John Gerngross, W-20
Richard Hawkins
David Higgins
Meghann Horner, C-163
Michael Hudner
Susan Humphris
Ambrose Jearld
Robert Knapp, W-99
Clifford Low, W-22
Bartlett McGuire
Philip McKnight
Don McLucas
Audrey Meyer
Ashley Tobin

Trustee Emeriti

James Humphreys
John Kingsbury
Paul Perkins
Robert Seamans*
Peter Willauer

President Emeritus

Rafe Parker

Overseers

Katrina Abbott	William Gible	Laurie Pohl
Raymond Ashley, W-01	Robert Giegengack	Cynthia Polikoff, W-95
Douglas Atkins	Douglas Goldhirsch, W-48	Kenneth Potter, W-43
Susan Avery	Sarah Gould, W-66	George Putnam
Paul Berkner, W-52	Samuel Gray	Robert Quinlan
Amy Bower, W-47	Deborah Harrison, C-108	Dwight Reese, W-41
Margaret Brady, W-29	Kathleen Healy	Ralph Richardson
Margaret Brandon, W-48	Jerome Heller	Bud Ris
J. Scott Briggs	Charles Holloway, W-58	Hal Rose, W-38
Frank Campanella	Paul Horovitz	Andrew Rosenberg, W-07
Frederick Carr, W-32	Gordon Hughes	Paul Rosenzweig, W-43
James Clark	David Jackson	Carl Safina
Thomas B. Clark, W-26	Robert Johnson	Carolyn Sheild, W-77
Margaret Clowes	Royal Joslin	Ralph Siewers
R. Hawkins Cramer, C-105	Patricia Keoughan, W-53	Steve Syverson
William Cramer	M. Susan Lozier	Michael Taylor
Benjamin Cuker	Martin Madden	Walter Thompson
John Damon	Edward Madeira	Janet Wagner
Sarah Das, W-129	Timothy Mahoney	Deborah Warner
William Dennison, W-33	Bruce Mallory	Thomas Weschler
Nicholas Dill	Jerrold Manock	John Wigglesworth, W-05
Scott Doney, W-76	Peter Mello	Gale Willauer, W-30
William Duggan, W-35	James Millinger	Richard Wilson
Sylvia Earle	Walter Mitchell, W-16	David Wisniewski, C-122
Steve Fantone	Sarah Murdock, W-66	Eric Wolman
Susan Farady, W-83	Michael Nathan, W-35	George Woodwell
John Farrington	Leroy Parker	
Edwin Fischer	Margaret Parker	
David Ford, W-113	Robert Patterson	
Robert Foulke	Cheryl Peach	
Lloyd French, W-130	Christopher Penn, W-06	
Robert Gagosian	William Pinkney	

We gratefully acknowledge the many alumni, parents, faculty, staff and friends who generously contributed their money, time and effort to Sea Education Association during the 2007-2008 fiscal year. Every effort has been made to list all contributions accurately from **July 1, 2007** through **June 30, 2008**. If, however, an error has been made, please accept our apologies and notify us.

On the following pages, **bold** type indicates donors who have contributed for at least 10 consecutive years.
† Indicates donors who have contributed for at least 5 consecutive years.

Annual Fund Donors

Trustee and Overseer Donors to the Annual Fund 2007-2008

Trustees

W. Jeffrey Bolster
Jacob Brown
Walter Brown
 John Bullard †
Richard Burnes
Edmund Cabot
Levin Campbell, W-60
Frederick Carr, W-32
Richard Chandler, W-07
Jamie Deming, W-14
Peter Ellis
John Gerngross, W-20
Richard Hawkins
 David Higgins †
 Meghann Horner, C-163 †
 Michael Hudner †
Susan Humphris
 Ambrose Jearld †
Robert Knapp, W-99
Clifford Low, W-22
Linda Maguire
 Bartlett McGuire
 Philip McKnight
Don McLucas
 Audrey Meyer
Richard Murray, W-71
 Ashley Tobin

Trustee Emeriti

John Kingsbury
Paul Perkins
Robert Seamans*
Peter Willauer

President Emeritus
Rafe Parker

Overseers

Katrina Abbott †
 Douglas Atkins
 Paul Berkner, W-52
 Amy Bower, W-47
 Margaret Brady, W-29
 Margaret Brandon, W-48
 J. Scott Briggs
James Clark
 Thomas B. Clark, W-26 †
 R. Hawkins Cramer, C-105
 Benjamin Cuker
 John Damon
 Sarah Das, W-129
 William Dennison, W-33
Nicholas Dill
 Scott Doney, W-76
William Duggan, W-35
 Sylvia Earle
 Stephen Fantone †
Susan Farady, W-83
 John Farrington †
Edwin Fischer
 David Ford, W-113
Robert Foulke
 Lloyd French, W-130
 Robert Gagosian †
 William Giblin

Robert Giegengack
Douglas Goldhirsch, W-48
 Sarah Gould, W-66 †
Samuel Gray
 Deborah Harrison, C-108
 Kathleen Healy
 Jerome Heller
 Charles Holloway, W-58
Paul Horovitz
Gordon Hughes
David Jackson
 Robert Johnson
 Royal Joslin
Patricia Keoughan, W-53
 M. Susan Lozier †
 Martin Madden †
Edward Madeira
 Timothy Mahoney †
 Bruce Mallory
 Jerrold Manock †
 Peter Mello
James Millinger
Walter Mitchell, W-16
 Sarah Murdock, W-66 †
 Michael Nathan, W-35
 Leroy Parker †
Margaret Parker

Robert Patterson
 Cheryl Peach
Christopher Penn, W-06
 William Pinkney
 Laurie Pohl
Cynthia Polikoff, W-95
 Kenneth Potter, W-43 †
George Putnam
 Robert Quinlan †
Dwight Reese, W-41
 Hal Rose, W-38
 Andrew Rosenberg, W-07
Paul Rosenzweig, W-43
 Carl Safina
Carolyn Sheild, W-77
Michael Taylor
Walter Thompson
 Janet Wagner †
Deborah Warner
Thomas Weschler
John Wigglesworth, W-05
Gale Willauer, W-30
Richard Wilson
 David Wisniewski, C-122
Eric Wolman
George Woodwell

Anchor Watch

Established in 1992, the Anchor Watch society honors those who provide gifts to Sea Education Association through their estates or life-income plans. We are pleased to recognize these special donors during their lifetime and to celebrate the important role that the Anchor Watch society has in the future of SEA.

Barbara Brown
 Jacob Brown
 John Bullard
 Richard Burnes
 Edmund Cabot
 Thomas B. Clark, W-26
 Norris Claytor
 Margaret Clowes
 John Damon

E. Peter Elsaesser
 Edwin Fischer
 Samuel Gray
 Grace Hinkley
 Fred Larson
 Mary Madden
 Michael Madden
 Don McLucas
 James Millinger

Margaret Parker
 Paul Rosenzweig, W-43
 David Ross
 Carolyn Sheild, W-77
 Galen and Anne Stone
 Janet Wagner
 Eric Wolman

Major Donor Clubs

MASTERS (\$10,000 and above)

Anonymous (2)
Jacob and Barbara Brown
Rick and Nonnie Burnes
Ned and Betsy Cabot
Edith Corning
Robert Knapp, W-99, and Kristin Collins
Margaret Parker
 Estate of Hilde Rosenthal*
Donald* and Alma Scully

HELMSMEN (\$5,000 to \$9,999)

Anonymous (2)
Timothy Armour, W-54
Walter and Kiyoko Brown
James and Ruth Clark
Jamie, W-14, and David Deming
Samuel and Margaret Gray
 David and Ilona Higgins †
 Michael and Hope Hudner †
 Royal Joslin

Edwin and Linda Morgens †
 Lauren Morgens, C-158
Susan, W-10, and Robert Nalewajk
 Clare Parker, C-138
 Leroy and Winifred Parker †
Christopher, W-06, and Diane, W-16, Penn G. West and Victoria Saltonstall
 Steuart Walton, W-158B
 Joan Wheeler †

MATES (\$2,500 to \$4,999)

Kyra Appleby, S-190
 Peter Appleby and Stephanie Raia
 John and Laurie Bullard †
Levin and Eleanor Campbell
Richard, W-07, and Cynthia Chandler
 Thomas B. Clark, W-26 †
Judith Cook
Nicholas and Birgitte Dill
 John and Meryl French †
John Gerngross, W-20

Craig and Nancy Gibson †
 Jonathan and Dorothy Goldweitz
Julia Hall
Richard Hawkins and Marian Ferguson
 Kathleen Healy and Julian Day
 Timothy Horkings and Margaret McGetrick
Gordon and Elizabeth Hughes
 Bevan Lee, C-181D †
George, W-21, and Susan Lee
 Timothy Mahoney and Pamela Donnelly †
 Jerrold and Mary Ellen Manock †
George and Kathy Putnam
Sally, W-15, and Robert Quinn
Bonnie Fry Rothman, W-103, and Michael Rothman
Edward and Susie Rowland
Jeremy, W-75, and Dianne Salesin
William* and Jane Saltonstall
Robert* and Eugenia Seamans
Walter and Nancy Thompson
William and Mary Warden
Eric and Sandra Wolman

*Deceased

Major Donor Clubs (continued)

SEAFARERS (\$1,000 to \$2,499)

Anonymous (3)

Donald and Barbara Abt

John Angelozzi, W-146A, and Rachel Tilney, C-109

Joseph and Pamela Barry †

Charles and Christina Bascom

James Beasley and Elizabeth Marshall-Beasley

Nicholas, W-55, and Wendy Bowen

Emily Bramhall, W-27

J. Scott and Mayke Briggs

Robert Campbell, W-58 †

Claudia, W-26, and Richard de Mayo †

Robert Demere

Clover Drinkwater

Susan, W-32, and Christopher Dyckman

David and Laura Ernst

Stephen and Elizabeth Fantone †

David and Mary Flinn

Ralph and Erika Forbes †

David Frank, C-174 †

Ruth Fye

Peter and Deborah Gibbons-Neff

Mark Goldweitz

Virginia Gray

Charles Hall

James and Diana Higgins

Meghann Horner, C-163 †

Susan Humphris and George Lohmann

Melville Ireland

Mary Johnson

Edward Kane and Martha Wallace

Sheldon and Audrey Katz

Gus and Liza Koven †

Dorothy Lappin

Barbara Littlefield

Robert and Constance Loarie †

Per and Margaret Lofberg

Martin and Anne Madden †

Edward and Grace Madeira

John and Linda Maguire

Roger Matthews and Jane Dougan

Mary Anne Mayo and Stephen Nelson

Bartlett and Cynthia McGuire

Don and Barbara McLucas

John and Constance McPheeters

Richard and Katherine Mellon †

David and Veronica Metzler †

Edwin and Cassandra Milbury

Anthony and Jen Miller

D. E. and Marjorie Murray

Robert Patterson and Jane Manipoli

Paul and Mary Perkins

Luanne Rice, W-25

George Rockwood

Paul Rosenzweig, W-43, and Kathleen Kunzer

Arah Schuur, W-122

Janine Shissler, C-110, and David Bae †

Chester and Leslie Siuda

Holbrook, C-105, and Tracy Smith †

Veronica Sperling †

Pamela, W-75, and Wallace Stark

Eric Swergold, C-102, and Dawn Dobras

Leopold and Jane Swergold

Robert Szafranski, W-98, and Nguyet Vo

Michael and Ann Taylor

Glen Thomas

Jan Tuttleman, W-14

Janet Wagner †

Brooks, W-36, and Catherine Wallin

Milton and Caroline Walters

Anne and Richard Webb

Joe and Anne Welch †

Gale Willauer, W-30

Richard Wilson and Leslie Maxwell

James, W-156, and Sarah Yockey

BOW WATCH (\$500 to \$999)

Anonymous (5)

Douglas and Kristen Atkins

Steven Barkan and Barbara Tennent

Séan Bercaw

Matthew Bloch and Marilyn Pasierb

W. Jeffery and Martha Bolster

George Booth, W-111 †

Gilbert and Eugenia Bovard

Francis and Margaret Bowles

Margaret Brandon, W-48

Andrew and Amy Burnes

David, W-71, and Lynn Butler

Seth Cameron, W-132 †

Randall Christian, W-160

Robert and Martha Cohn

R. Hawkins Cramer, C-105, and Emily Lauderback

James and Martha Crowley

Marjorie Crowley, S-213

John and Catherine Damon

Samuel, W-116, and Elizabeth, C-14, Davenport

William Davies, W-10

Rohit and Katharine Desai †

John and Lee Dorn †

David Drinkwater, C-113

Sylvia Earle

James and Nancy Edwards †

Peter and Cynthia Ellis

Edwin and Angela Fischer

Dielle Fleischmann

Jeanne, W-56, and Phillip Foussard

Ronald and Kathy Frederickson

Ellen Gallagher, W-91

Thomas Gardiner

Judith Gregg-Holden, W-96, and Kevin Holden †

Stephen and Sally Gresham

Edward Grier, W-48 †

Jane Hollowell

George and Polly Hamilton

Franklin and Linda Hobbs

James Hughes and Bess Dawson †

Ambrose and Anna Jearld †

Carolyn, W-36, and Steven Jones

Howland and Betsy Jones †

Kirk Keil, W-111

Morris and Elizabeth Kellogg

H. David and Meredith Kenyon

John and Louise Kingsbury

Thomas and Susan Knight

Robert and Patricia Lawrence †

James Lazar, W-78, and Carolyn Leep

George and Emily Lewis

Christopher Lovelock*

Vincent and Crystal Lucchesi †

Philip and Kathy McKnight

Amy, C-151, and Daniel McMorrow

Peter and Kathleen McNaul †

Richard McWethy

Bruce Meier and Wendy Fearnside

James Millinger and Charlotte Hatfield

Walter Mitchell, W-16

Colleen Moran, W-122, and Eric Silva

Michael, W-35, and Michele Nathan

Clifford Nelson, W-71, and Tracy Weidman †

Victoria, W-77, and Peter Phillip

Cynthia, W-95, and B. Steven Polikoff

Scott and Joan Possiel

Marilyn, W-18, and Gregory Proulx

William and Diane Pulleyblank

Robert and Judith Quinlan †

E. Leigh and Nancy Quinn †

Julia Rankin

Howard and Judith Reynolds

George, W-39, and Jo Ann Rockwood

Hal, W-38, and Lisa Rose

Irving and Beverly Rosenzweig

Carl Safina

Katrina, W-15, and John Schilling

Damon, W-56, and Bruce Scofield †

David and Susan Seward

Ross and Kathleen Sherbrooke

Michiru Shimada, C-148 †

C. Hamilton and Ann Sloan

Theodore Sprague, W-116, and Annette Olson

Stephen and M.E. Taylor †

Peter and Elizabeth Thomson

Elizabeth, W-22, and Edward Tirrell

Robert Van Aken, W-121, and Colby Enderton

Deborah Warner

Thomas and Katrina Weschler

William and Shelly White †

David and Gayle Whittingham

Sylvia Wolf, W-37

Benjamin, W-79, and Anne Wolff

Bonnie Wood, W-36

George and Katharine Woodwell

On all pages, **bold** type indicates donors who have contributed for at least 10 consecutive years.

† Indicates donors who have contributed for at least 5 consecutive years.

ANNUAL FUND Alumni Donors

01 James Nason Craig Williamson	20 John Gerngross	35 continued Melinda Pearce Holly Smith John Taylor	48 Margaret Brandon Wendelyn Duquette Helen Edwards Rodman Getchell Douglas Goldhirsch Edward Grier † Lori Pettiti Christopher West	58 Robert Campbell † Debra Felix Charles Holloway Stephen LaFrance	68 Edward Conti † Cynthia Layport Laurie Radovan †
03 Thomas Carley † Samuel Howe Thomas Robinson	21 Jacob Korngold George Lee Raymond Palombo Katherine White Robert Wiberg †	36 Edward Colt Carolyn Jones Brooks Wallin Bonnie Wood	49 Barbara Block Ann Durbin	59 Claudia Corwin Aaron Horwitz Margaret Jay Patrick Keenan Sarah Kohl Sarah LeDoux Lynn Mahaffy † Patricia Mahoney	70 Janet Buskirk Streeter Nelson
04 Carl Hauquitz	22 Clifford Low Stuart Stedman Elizabeth Tirrell	37 Stephen Burnham Andrew Puffer Sylvia Wolf	50 James Anderson Priscilla Brooks Jeffrey Dickson Lisa FitzGerald Sharon Ginand Wynn McCloskey Robert Nolan † James Saroka	60 Anonymous Ellen Mihaich Martha Moulton	71 David Butler Richard Murray Clifford Nelson † Stacie Pinney † Alexander Prud'homme Gretchen Rollwagen-Bollens † Dean Smith
05 Larry Kammer John Wigglesworth	23 Seth Garfield Steven Hudson †	38 Richard Crispin Hal Rose Christine Smith	51 Deborah Arey Stephen Bollens † Susan Duke Hilary Hudson † Susan Mann	61 Deborah Carlson Patricia Goffinet Tom Goffinet Hilary Maybaum Lawrence Taborsky † Craig Timmins	72 Merril Cousin Robin McGill Christopher Perry † Norman Price Todd Rambo M. Carolyn Stewart † Edward Walton Elizabeth Whyley
06 John Hamilton † Christopher Penn John Sculley † G. Crossan Seybolt David Tew	24 B. Cort Delany †	39 Patricia Collins Charles Natale † George Rockwood	52 Paul Berkner Gwenllian Scott † Linda Witte	62 Barbara Dinkins Elizabeth Briggs Feighan Mark Murray-Brown Judith O'Neil Rebecca O'Sullivan- Hunnewell	73 Kimberly Heiselman C. Nicholas Risom P. Langley Willauer †
07 Richard Chandler Cynthia Hyde Alan McIlhenny Andrew Rosenberg	25 Luanne Rice Alfred Schumer	40 Susan Savage †	53 Mickey Jones † Patricia Keoughan Abbey Rosso	63 Elizabeth Jakob Andrew Milliken Peter Nalen † Renee Turley	74 Catherine Counsell Timothy Dickson
08 John Hamilton † Christopher Penn John Sculley † G. Crossan Seybolt David Tew	26 Thomas B. Clark † Claudia de Mayo † Bradford Smith	41 Ella Quintrell † Dwight Reese	54 Timothy Armour Mariette Buchman Christopher Patricoski David Wright	64 Florence Darden James Kerney Susan Service Lisa Sherman †	75 Jeremy Salesin Pamela Stark Panos Stephens
09 Richard Chandler Cynthia Hyde Alan McIlhenny Andrew Rosenberg	27 Emily Bramhall Andrew Follett †	42 Mary Jo Dedon Paul Detjen † Diana McCargo Jeffrey Platt James Snyder † Daniel Tierney †	55 Anonymous John Abrams Nicholas Bowen Jane Caffrey Nancy Gravina † James House Mary Myers † Marc Overlock	65 Janvrin Demler Phillip Huffman Penny Lacroix † Alec Maxwell-Willeson † Cy Oggins Jennifer Paduan Susan Pierce Caryn Smith	76 Anonymous Scott Doney
10 William Davies Richard Hamilton Susan Nalewajk Andrew Wolf †	29 Anonymous Margaret Brady Suzanne Jonsson Robert Swarm	43 Anonymous (2) Franklin Armour David Goldsmith R. Steve Luce Kenneth Potter † Paul Rosenzweig Helen Shaw	56 Jeanne Foussard Douglas Gottschlich Michael Kent Peyton Robertson Damon Scofield † Sarah Whalen	66 Renee Allen Hugh Ferguson † Sarah Gould † John Kelley Sarah Murdock † N. Allyn Pistole † Jennifer Woodward †	77 Gregg Delany Victoria Phillip Carolyn Shield Katherine van Liere
11 Paul Toczylowski †	30 Christine Duerring William Fanning Mark Klemperer Dody LeSueur Margaret Merrill Gale Willauer	44 Katharine Bradford Nadim Saleeby Peter Stein	57 Carin Ashjian † Marla Gearing † Rebecca Hemphill E. Denley Poor-Reynolds	67 Karen Susskind	78 Charles Courtsal Christine Gabriele James Lazar Philip Marsh †
12 Stephen Wagner	31 Chel Anderson Elizabeth Billig Frederick Carr Susan Dyckman	45 Gwen Burzycki Lynn Francis † Nicholas LaFond † Martha Martinez del Rio William McMahon Robert Visnick			79 Judy Fairfull Laura Moser Virginia Pillsbury Stephen Rader Joshua Weil Benjamin Wolff
13 Leslie Rosenfeld	32 William Balch Anne Chapin William Dennison Christopher Mott	46 Agnes Rapoli Stacy Rappleyea			80 Geoffrey Alexander Marlene Kattaron Natalie Stephens
14 Jamie Deming Donald Kyrnitszke Jan Tuttleman	33 William Balch Anne Chapin William Dennison Christopher Mott				
15 Todd Carlson Sally Quinn Katrina Schilling	34 Russ Chinnici				
16 John Miller Walter Mitchell Diane Penn	35 Sue Cotter David Donegan William Duggan Jonathan Leavitt Mark Longval † Michael Nathan				
17 Rebecca Kniesler Janice Olsen					
18 Nancy Hendren Lucy Loomis Marilyn Proulx					
19 Riki Ott					

ANNUAL FUND Alumni Donors

81 George Leonard Tamara Risser Rochelle Seitz Edwin Williams †	93 Amy Blumenberg Christine Dixon-Donnelly Caroline Klug Amy Logan † Michael Mathewson	105 Anonymous Andrew Bess Susan Carter R. Hawkins Cramer Janet Richard Kristen Sanders Holbrook Smith † Alton Straub †	113 Anonymous Jonathan Burke David Drinkwater David Ford Scott Gilbert † Darcy Harwood Dawn McIntosh Christopher Poor Richard Schlereth † Vivian Sousa Gabriel Thoumi † Victoria Wright	122 Anonymous Andrew Daniels Colleen Moran Kelli Scheerer Arah Schuur Shirley Steinmacher David Wisniewski	131 Sarah Dawson Jennifer Fick Matthew Holstein David Kirk Virginia Leslie Sharon Schaff Frederike van Markus-Doornbosch
82 Hilary Hoagland-Grey	94 Kathryn Carlson Thomas Jester Colm Sweeney	106 Rebecca Arenson Ginny Eckert Jeannette Zamon †	114 Craig Butterworth Elizabeth Davenport Scott Miller Kristin Patrick	123 Anonymous Alexis Levitt Matthew McKenzie Laurie Morgado	132 Seth Cameron † Andrew Enright Brannon Fisher † Justin Harrison
83 Susan Farady Katherine Irvine Stephen Laster † Kimberly Murphy	95 Robert Bein Brian Levy Cynthia Polikoff	107 Sarah Lawson † Daniel McFadden Patrick O'Donnell Mark Olcott Rachel Parry Courtney Richmond Charles Sontag Erica Young	115 Beth Donnelly David Jones † Carin Kucpical Amy Turnbull	124 N. Craig Gorton † John Tapscott	133 Heidi Hendrick
84 Elizabeth Concaugh Nina Nesher Carl Stevens Elizabeth Stevens	96 Michael Budniak Mary Ewenson Judith Gregg-Holden †	107A Sharon Redford † Betty Schuler †	116 Samuel Davenport Andrew Fischer † Kathryn Garrison Amy Harry Robin Krest Theodore Sprague	125 Elizabeth Gilgan † Matthew Hebard Victoria McMillan Margaret Millings	134A Jack Balcome Lucia Kaempffe
85 Robert Beede Kimberly Schulz Carol Sinesi	97 Andrew Campbell Kimberly Drew Deborah Hamilton Michael Johnson Teresa Weronko	108 David Bernhart † Robert Carroll Jane Happy Deborah Harrison Julia Wellner	117 Lisa Buffitt Kenneth O'Brien	126 Danielle Bornstein Aron Clymer Charlotte Hanley-Jacobson † Kimberly Howland Erica Starr	135 Heather Bryant † Sarah Fischer † Katharine Lussen Shannon McKenzie Kristen Patterson Peter Tilney Kristina White †
86 John Gonzales	98 Marjorie Friedrichs James Krest Martha Stark Robert Szafranski Valerie Zandoli †	109 Theresa Bissell Bruce Cheever Kerry Dorton Jennifer Haddock † Frederick Stewart Rachel Tilney	118 Sherry Cawhorn-Christopher Wilson Flight Pamela Jones Megan Murray	127 William Aquila Peter Colby † Jeffrey Fellingner Adam Gildner Barrett Ide Jonathan Mitchell Margaret Woodcome	136 Caroline Good Aimee Meyer † Jacqueline Mitchell
87 Andrew Felcher † Mary Homer David Johnson Kristen Mugnai † Suzanne Schoelch	99 Stephen Cann Deborah Greene Robert Knapp Christopher Legault William Ross	110 Christopher Ducko Christopher Reich † Janine Shissler †	119 Walter Carr Shannon Doubet Craig Marin Christopher McChesney James Monti † Karen Sauls † Sarah Skimin	128 Richard Adler Todd Moore Nicole Stephenson	137 Mark Behn † John Bowen Heather Goldberg Kathleen O'Neil Eric Stoddard † Amanda van Heyst †
88 Kelly Fuentes Steven Gold Robert Ultan	100 Stuart Friedman Christopher Kilbridge J. Parke Logan †	111 Robert Anderson George Booth † Shelby Collier Heather Kaese Kirk Keil James Ramsdell Geoffrey Zentz †	120 Jeffrey Hughes † Krista Longnecker Linda Pinto †	128C Anonymous Amanda Patrick	138 Laura Fravel Clare Parker
89 Timothy Hall Patricia Nicoll Kimberly O'Sullivan Helen Rozwadowski †	101 Gregory Burdick George Duane Neil Glickstein † Karen Rennich Eric Sigler †	112 Nancy Israel Kimberly Markuns † Timothy Myrtle Robert Robertson	121 Winslow Burleson Wendin Smith Robert Van Alen	129 Bruce Armbrust † Christian Cox Sarah Das Jennifer McDermott David Zappulla	139 Kate Parker
90 Valerie Beck Julianne Dalzell Ingrid Dockersmith † Barbara Toomey William Toomey	102 Johnna Doyle Andrew Frantz Daniel Polidoro Alicia Riche Mary Shook Eric Swergold			130 Lloyd French Ravi Lumpkin † Elizabeth Lyman Heidi E. V. McCann Matthew Muldorf	139A Kenneth Baughman
91 Ellen Gallagher Nils Jackson	103 Marci Glazer Steven Hilger Bonnie Fry Rothman			140 Jessica Forton James Higgins	140A Anonymous Thomas Mulholland † Kurt Wagner
92 Laurel Anderson Gregory Braun E. Bradley Grenham Benjamin Hall Janet Keeler Patricia Murer Jennifer Nauen † Claire Timbas	104 Elizabeth Hasse Colin Kendrick Gary Matusow Todd Taylor †			140C Anonymous	

On all pages, **bold** type indicates donors who have contributed for at least 10 consecutive years.

† Indicates donors who have contributed for at least 5 consecutive years.

ANNUAL FUND Alumni Donors

141 Jonathan Kohler † Aurianne Lopatka † Christopher Pastore Sharon Smith †	151 Amy McMorow Hope Rowan Tonya Van Leuvan	160 Sarah Bennett Randall Christian Timothy Dwyer	170 Anonymous † Rebecca Royal	180 Anonymous Choya Adkison-Stevens Erin Klein Juliette McCullough Brendan Smith Erik Wallenberg	188C David Gouch
142 Ashley Kidd Amy Siuda Stephan Tompsett	152 Kathleen Hallee Nadine Smith	161 Weston Cantor Shanna Kirschner Jay Reynolds Reid Smith Melissa Solomon Darlington †	171 Nicole Cheatle † Lauren Danks Michael Furlong † Peter Rose-Molina Anna Rubin Sarah Spotts Eric Varney	181 Sean Bryan Toby Krasney Mark Lambton Lauren Miller Skye Morse Aimee Rowe Carrie Wieder	189 Anonymous (2) Lila Carey Meredith Costa Scott Hiller Celeste Plautz
143 Amy Berry Donald Keel Samantha Murray Jennifer Walus	152A Nancy Cande Alison Cochrane Peter Leddy Bryant Madsen Carolyn Nybell Mary Peters † Richard Rodin †	162 Anonymous Jodi Campbell † Emily Chandler Megan Hwang Elizabeth Maloney Johanna Mendillo † Christina Young	172 Kyle Garrett Morgan Nickerson † Elizabeth Reilly Sarah Sharp Tara Staskowski Elizabeth Stefany Elizabeth Strojny † Adam Vitarello Christopher Wilson	181B Debra Gray	190 Kyra Appleby Nathaniel Cameron Allison Dutton Benjamin Erne † Lauren Gilbert † Emily Harwood Hallie Lee Heidi Miller Sasha Pryborowski Molly Skinner-Day Benjamin Tipton
144 Alisa Barnard Kimberley Craven Olivia Hauser J. Bradford Hubeny Andrew Siuda	153 Joshua Frederickson Marion Frederickson Tessa Knaggs-Johnson Christopher Lanoue † Jessica Macrie David Sunderlin Shane Walden †	163 Jaime Beranek Carl Heise Meghann Horner †	173 Kyle Helland Alexander Paul	181D Bevan Lee †	191 Lee Finley-Blasi Elizabeth Haffenreffer Marianne Stadel Natalia Stefanova Carey Tinkenberg
145 Molly Peters Jonathan Zwarg	154 Kathryn Hubeny Margaret Martsching	163B Richard Carreiro Michael Horn Randy Hytry	174 Christopher Acheson Brian Ambrette David Frank † Matthew Stringer	182 Kathleen Haber April Suriano † Sadie Wieschhoff	192 Anonymous Rebecca Bartlett Liza Cochran Allison Dellner Hannah Elisha Robert Filbin Allegra Fisher Ryan Joyce Jennifer Knight Jared Kosin Abigail Lowell Jessica McGreehan Kate Moller Vanessa Morris Nicki Noble Laryssa Ohlson Timothy Pusack Erin Roach Allison Robinson Lindsey Ryckman Lee Smith
145A Sarah Clowes	155 Alysa Arnold Catherine Bozek Craig Donaldson Anna Clare Graver Elizabeth Huston Jeremy Lynn E. Anders Matney Erin Myers	163C Anonymous	175 Peter Hahn † Lee Stanish Sara Yablon-Smith	183 Anonymous † Gillian Faustine Laura Hutton Elliot Jacobs Sarah Lucchesi Thomas Martin Bryan Sparkes Rebecca Wells	193 Aaron Joslow Alice Kunce
146 Sabrina Schlumberger Wendy Thorpe	156 John Mason Rosanne Mason James Yockey	164 James Hildebrand Noah Horst Zoltan Szuts †	175B Kathryn Burns	184 Anonymous † Laura Curry Katie Goeres Brian Grandjean Abigail Keene † Geneva Michaelcheck † Lev Nelson Matthew Peters Gregory Voll †	193E Carl Katsu †
146A John Angelozzi John Lazzaro Margaret Sadeghpour- Kramer	157 Martha Egnal Michael McKinnon	165 Deborah Liptzin † Emily Molden Morgan Simmons	176 Danielle Fashauer	185 Lara Clemenzi Bethany Sullivan	194 Chelsea Fairbank Ryan Gritzke Eula Kozma Alexis Mann
147 Anonymous Amy Cameron Sarah Stearns	157B Daniel Wallace	166 Gwendolyn Hancock	176D Lucy Trainor	186 Anonymous Jay Delehanty Jacob Keaton Kevin Sullivan	195 Anonymous Emma Bassein Kathryn Feller Elizabeth Gryska
148 Peter Boyd Kelwin Conroy Michiru Shimada †	158 Lauren Morgens Angela Seaborg	167 Gina Coggio Marguerite Fontaine Erik Hanberg Benjamin Hussa Stephen Kirk Sarah Zengo	177 Colleen Allard Kristin Hunter-Thomson † John Putnam Sarah Smith	187 Alice Chiu	
149 Matthew Burke Charlotte Engelman † Jennifer Littlejohn Daniel Pollard † Rachel Wade	158A Mary Frieze † Clarice Holm Antoinette Kelly Alisa Scott †	168 Marjorie Blake Nicole Deming Elizabeth Grubin	178 Anonymous Corinne Beth Zachary Caldwell Meghan Donohue Ashley Ellison Jesse Funk Elizabeth January Stephen Ruane	187D Thomas Gagnon Elizabeth Horn †	
150 Joseph Creney Anne Elefterakis † James Foley Kelly Hike † Timna Onigman Philip Petrone Sarah Webster	158B Steuart Walton	169 Ryan Gordon †	179 Kalmia Buels Jonathan Cedar Emily Hall Bess Koffman	188 Stephen Cuffey James Palardy	
150B Benjamin Carr	159 Jaime Dahlke Mason Angela Damery Robert Hancock Micah McOwen	169B Anonymous †	179C Anita Goldberg Jon Neergaard †		

ANNUAL FUND Alumni Donors

<p>195 continued Clara Hard Travis Hollingsworth Randolph Jones Maureen Lynch Brittain Mason Stephanie Pritchard Adele Roland Hannah Roth Elizabeth Summers</p> <p>196 Nathan Boon Katherine Mueller Eric Shepard Cassandra Skinner</p> <p>197 John Gregory Steven Ibara Wynne Kandur Daniel Kayne Roman Kichorowsky</p> <p>198 Sarah Clement Erik Johanson Min-Yi Jou Elizabeth Reimers Michael Silberman Danielle Tommaso Elizabeth Torgersen</p>	<p>199 Leslie Goemaat Laure Katz</p> <p>200 Elizabeth Davis Sean Kim Kathryn MacDonald</p> <p>200A Alexandra Canepa Simon Schreier</p> <p>201 Margaret Alferman Kate DeBellis Rachel Greenough Mackenzie Haberman Amanda Hall Monica Kerr-Riess Genna Laurino David McGregor Benjamin Millard Stephanie Owens Anna Stevens Thomas Summers Eleanor Tripp</p> <p>202 Matthew Blumenfeld Noah Kaufman Bonnie McGill</p>	<p>203 Max Bronstein Abbey Dubin Daniel Fitzgerald Jessica Friedman Colleen Hanlon-Smith Samuel Lemonick Andrea Murphy Stephanie Thompson Mark Whiting</p> <p>204 Anonymous Jaime Budzynkiewicz Russell Chaput Alexander Dorsk Marshall Frye Eleanor Gordon Andrew Horsburgh Nastasha Horvath Scott MacLellan Ryan Mullins Sarah Pilzer Rachel Reynolds Daniel Stone Jenna Sullivan Seisei Tatebe-Goddu Charles Wisotzky</p> <p>205 Yana Thaker Robert Whitlock</p>	<p>206 Daniel Krofcheck Michael Merkley</p> <p>206B Anna LaVigne</p> <p>207 Chad Bennett Jose Lobon Judith Meer Caitlin Morrison Dana Powell Kathryn Rodgers Christopher Seward Kyle Sherman Pamela Teixeira</p> <p>208 Corissa Currier Christa Daly Rosalinga Fortier Charles Kenyon Ashleigh McCord Adele Paquin Benjamin Yanni-Lazarus</p> <p>209 Maya Choy-Sutton Kimberly Ellenson Scott Loranger Ryan O'Toole</p>	<p>209 continued Amanda Rook Michael Tillotson Mara Vaile Elizabeth van der Mandele</p> <p>210 Katrina Barnes Joshua Bates Heather Kalei Katherine Letourneau Bradley Nicholson Caitlin O'Hern Jacqueline Ratner Adam Scherr</p> <p>211 Gordon Blackwood Robert Brewer Kathryn Hoffman Melissa Kunz Karen Lone Scott McCracken Jessica McNally</p> <p>211E Benjamin Ushkow</p>	<p>212 Lauren Hale Sean O'Brien Craig Smith Henry van Wagenberg</p> <p>213 Daniel Aschaffenburg Marjorie Crowley Kristina Muscalino</p> <p>214 John Armstrong Anna Simeon</p> <p>215 Chelsea Apito Gregory Ardini Sophia Bahlkow Laura Bramley Meredith Briand Derek Castro Megan Cook Alexandra Fioretti Julia Haines</p>
---	---	--	--	--	--

ANNUAL FUND Parent Donors

<p>Anonymous (9) George and Marjorie Abbot Frank and Julie Abegg Leslie Abrons Frank and Cheryl Adrean Terry and Sheila Aiken † Dean and Susan Allen James and Nancy Amberson Peter Appleby and Stephanie Raia Alan and Denise Armstrong Millicent Armstrong Curtis and Eileen Axelsen Francis and Jane Ballard Stanley and Phoebe Balsky Steven Barkan and Barbara Tennent Donald and Elaine Barnes Irving and Janice Barrett Joseph and Louise Bassett Stephen and Gretchen Bates Jorge and Margarita Batista James and Carolyn Baughman John and Carol Beach Robert and Julie Bennett Eric and Penny Bergoch J. Leonard and Dorothy Bicknell † Matthew Bloch and Marilyn Pasierb John and Carol Boehringer Timothy and Gail Borkowski David and Harriet Borton Arthur Bouchard † Gilbert and Eugenia Bovard Keith and Mary Jo Bradley</p>	<p>Anthony and Elizabeth Branca † Robert and Erna Brandon J. Scott and Mayke Briggs Helen Brown Walter and Kiyoko Brown Irving and Mariette Buchman William Buckley John and Marcia Buckman † David and Janet Burke Daniel and Holly Burnes Elizabeth and William Burnham Tony and Nancy Butterworth Gregory and Kristine Caldwell Levin and Eleanor Campbell Charles and Linda Canepa Craig and Ann Carpenter Dennis and Elizabeth Cashman Laurence and Brett Casper Denice Chandler and Catherine Jones † Richard and Susan Chandler † Stephen and Lynda Chandler Robert and Susan Chennell Douglas and Linda Christian Edwin Chua and Lorie Dolce Dexter and June Churchill L. Elliott and Judith Clark † Robert and Martha Cohn Fred and Barbara Colin Kenelm and Marilyn Collins</p>	<p>Judith Cook Christine Corrigan Thomas Cotton and Melinda Howe Charles and Nancy Craig † James and Martha Crowley John and Catherine Damon David Danks Robert and Sally Davis Rodney and Christine Decker Rohit and Katharine Desai † William and Mary Lou DeWitt † Tom and Linda Dieveney John and Anne Dilts Helen and Joseph Dixon Brian and Katherine Donohue John and B. Lee Dorn † Charles and Maryann Dorsey Clover Drinkwater David Drinkwater Irénée and Barbara du Pont John and Merrill Dutton David and Mildred Ebbin Donna Eden † Karrie Ellis Peter and Cynthia Ellis Stephen and Carole Enright David and Laura Ernst Vivian Esswein John and Carolyn Evans</p>	<p>Stephen and Elizabeth Fantone † Stephen and Dagmar Finkle William and Fernanda Firth † Nancy Forrest John and Carla Fox Edward and Karen Fraioli † Matthew and Gretchen Frank Ronald and Kathy Frederickson John and Meryl French † Gregory and Nancy Fritz † Francis Fruehstorfer Eric Frye and Ellie Costa Jane Frye David and Audrey Funk Joseph and Marilyn Galanti William and Louise Gallaway James and Donna Garaventa Thomas Gardiner Frank and Erin Gentile Lawrence and Laura George Peter and Deborah Gibbons-Neff Ann and Lawrence Giddings Nathaniel and Joan Gorton Jeri Gouch Alice Goyert † Joseph and Beverly Gracia Edward Grandin Thomas and Joan Granger † Jonathan and Donna Gray</p>
---	--	---	---

On all pages, **bold** type indicates donors who have contributed for at least 10 consecutive years.

† Indicates donors who have contributed for at least 5 consecutive years.

ANNUAL FUND Parent Donors

Samuel and Margaret Gray

Sandy Green
James and Carol Greenough
Stephen and Sally Gresham
Benjamin Gruberg
David and Joan Grubin †
Margaret Gryska
Thomas and Marcia Gustafson
Harold Hackett
Peter Haddock
Peter and Lindsay Hagen
Charles Hall

Jeannette Hall

George and Polly Hamilton
Bart and Maribeth Hammer
Charles and Robin Hammond
Tom and Stephenne Harding
Robert and Karolyn Harwood

Richard Hawkins and Marian Ferguson

Jamie Haywood
Mark and Anne Heinen

Edward Heiskell

Rodger and Jillian Herrigel
David and Iлона Higgins †
Alice Hildebrand and Allen Myers
Michael and Linda Hoffmann

Kenneth and Willa Hogberg

Gerald and Jane Holtz

Richard Hornby and Tracey Leger-Hornby
Mark and Laurel Houle
Edward and Dorothy Hudson
Stephen and Rosemary Huson
Peter and Linda Hutton †
John and Carole Ide †
Roger Ide and Gail Boettiger
Paul and Marjorie Inderbitzen †
Yvana Iovino

William Irving

Deborah Jackson
Mary Jackson
Edward and Myrna Jenkins
Alexander and Jill Johnson
James and Melinda Johnson †
Robert and Elizabeth Johnson
Mrs. Stephen Johnson
Randolph and Susan Jones

Suzanne Jonsson

Jack and Cynthia Kadzik
Werner and Dorothy Kaese
Edward Kane and Martha Wallace
William and Margaret Kaplan
Isao and Yukiko Kato

Sheldon and Audrey Katz

Patricia Kelly
H. David and Meredith Kenyon
James and Mary Emily Kerney
Frank and Jane Ketcham
Brian and Sally Kirby
Elmer and Marilyn Klumpp
Edward and Amy Knight
Thomas and Susan Knight
Rick Krell †

Kevin Kunz and Kathleen Mishina

John and Kathleen Lanoue

Dorothy Lappin

Susan Laur

Peter and Gertrude LaVigne
Paul and Jane Lawrence

George and Susan Lee

David Lemonick and Mary Tuttle
Richard and Lynda Levengood
Robert and Constance Loarie †
Christopher Lovelock*
Clifford and Randy Low
Ralph and Priscilla Lowell †
Vincent and Crystal Lucchesi †
Michael and Patricia Lucy
Myles and Cornelia Lund †
Lynn MacCuish
John and Susan Mackay
Michael and Sue Macrellis

Edward and Grace Madeira

Hugh and Ruth Mahaffy
Timothy Mahoney and Pamela Donnelly †
Steve and Sarah Malinowski
William and Christina Maloney †
Robert and Susan Mandel †
Richard and Joyce Mann

Hugh and Olive March

Frank and Linda Maresca
Richard and Virginia Marr †
Miles Marshall
Albert and Janice Martin
P. Gail Martin
Thomas Martin
Deacon and Marie-Laure Marvel
Charles and Monika Mason
R. Hardin Matthews and Jane Dougan
Carl and Sharon Matuszek †
Kathleen Maxon

Mr. and Mrs. Oscar Mayer

Mary Anne Mayo and Stephen Nelson
Joe McAlister

E. Dennis and Sandra McCarthy

Peter McChesney
Walter and Carol McClennen †
Steve McCracken and Sue Waggener
Bartlett and Cynthia McGuire
David and Ellen McKinnon

Robert and Patricia McNitt

John and Constance McPheeters
Bruce Meier and Wendy Fearnside
Anne Meigs-Brown
Andrew and Eleanor Merritt
David and Veronica Metzler †
Audrey and William Meyer †
William and Wenda Millard
Donald and Susan Miller
Stephen and Christina Miller †
Gail and Phil Minschwanner

Braxton Mitchell

Thomas and Barbara Mitchell †
Sarah Moore
William and Margaret Moorhouse
Edwin and Linda Morgens †
Robert and Mary-Margaret Morse
Marc and Elizabeth Mueller
William and Marilyn Munger
James and Linda Murphy
George Neiley and Ellen O'Brien
Eric and Margaret Neilsen
David Nelson and Rachel Jewelewicz-Nelson
J. Nicholas and Kathleen Newman
Anne Nichols
David and Susan Nicholson
Kyle and Diane Noble

Christiane Northrup
Mr.* and Mrs. David Nutt
Charles and Eugenia O'Brien
R. Michael and Celine O'Brien
Maksymilian and Grazyna Ostas
Renée Bennett O'Sullivan
Leroy and Winifred Parker †
Rafe and Kate Parker
Diane Patton
Nancy Pendleton
Christopher and Diane Penn
James and Debra Peters
Thomas and Mary Kay Pilat
Robert and Anita Poss
Scott and Joan Possiel
Mark and Diane Pofesky
Ken and Kim Pritchard
William and Diane Pulleyblank
John and Cynthia Putnam †
Donald Quartel and Michela English
Mary Quinn-Devine
Peter and Karen Rabins
Michael and Alicia Rafter
William and Karen Regan
John and Sharyn Reitz

David and Elaine Ressler

Gary and Bernice Reynolds †
Christopher Richardson
David and Sandra Roberts

Andrew and Harriot Rockefeller

George Rockwood

Irving and Beverly Rosenzweig
Randall and Jenifer Rydz
Gary and Elissa-Ann Samberg
Jane Sattler †
Rosalind Schmitt
Robert and Martha Schoenemann
Joshua and Eve Schreier
Peter and Lucy Schumer
Peter and Kathi Sciafani

Donald* and Alma Scully

Edmund and Ellen See
Richard and Gwyn Sewall †
David and Susan Seward
Edward and Joan Shankle
Susan Shanley
John and Helen Sharpe

Christopher and Margaret Sheedy

John and Jean Sheild
Robert and Mara Shlachter
Jack and Patricia Shumate †
William and Mary Lynn Simmons
Chester and Leslie Siuda
Louis and Barbara Sklar
C. Hamilton and Ann Sloan
Roger and Carol Sloboda †
Bernard and Trudy Smith
Bradford and Christine Smith

Kaighn and Ann Smith

Margaret Smith
Stephen Smith and Jeanette Hanlon
Thomas and Barbra Smithgall
Gary and Christine Soares
Robert and Kay Soucy
Helen Spaulding
Robert and Cynthia Spencer
Veronica Sperling †
Patricia Sprague

Paul and Deedee Sprecher
Fred and Kathleen Stadel
Ronald and Carolyn Starr
Bruce and Betsy Stefany †
Daniel Stevens
Edith Stevens
David and Margo Stone
Greg and Joyce Studen
Edwin and Phyllis Stumpf
Paul and Lenore Sundberg
Fred Suppes
James and Aimée Swain
Philip and Joan Swanson
Leopold and Jane Swergold
James and Julie Swol
Michael and Ann Taylor
Walter and Nancy Thompson
Peter and Elizabeth Thomson
Philip and Ellen Tilney
Howard and Judith Tolkan
Thomas and Donna Trainor
Keith and Mary Turner
L. Barry* and Susan Ultan
Thomas and Deanne Urmy
Bruce and Charmaine Ushkow
Gary and Linda Varney
Michael and Dorothy Vicari
James and Virginia Vitarello
John Wade and Yuko Higa †
Mr. and Mrs. Colton Wagner
Stephen and Carol Ann Wagner
Milton and Caroline Walters
Charles and Maria Watson †
Mark and Susan Webster
Patricia Weis-Taylor
Elizabeth Went
Kelly and Dyan Westman
Michael and Catherine Whalen
E. Douglas and Barbara White †
William and Roberta Whiting
David and Gayle Whittingham
Peter Willauer and Carol Nugent
W. Bradford and Ann Willauer
Thomas and Alice Willey
Craig and Nancy Willis
Vincent and Susan Wisniewski
Albert and Barbara Wolcott
Edward and Ann Woll
John and Pauline Woodward
George and Katharine Woodwell
Louis and Pauline Zandoli
Steve Zelenski
James Zethmayr and Mary Gebka
Michael and Carole Ziegler †
William and Elizabeth Zimmermann
David and Susan Zoia
Andrew Zuorski and Linda Hamilton
Stephen and Janet Zwarg †

*Deceased

ANNUAL FUND Friends

Anonymous (6)
 Katrina Abbott and Benjamin Lummis †
Donald and Barbara Abt
Arthur and Renée Allen
 Joel Alvord and Lisa Schmid
William and Elsie Apthor
 John Armstrong
 David Arnold
 Douglas and Kristen Atkins
 Ruth Atkinson †
 David and Nancy Babin
 Arthur and Mary Baker †
 Benjamin and Deborah Baker †
Nicholas Baker
Talbot Baker
Henry and Alice Barkhausen
 Jennifer Barone
 Joseph and Pamela Barry †
Charles and Christina Bascom
 James Beasley and Elizabeth Marshall-Beasley
Roger and Masako Bellinger
 Séan Bercau
 Charles and Janet Bergmann
 Thomas Bethea †
 R. William and Mary Jean Blasdale
W. Jeffrey and Martha Bolster
 A.S. and Peggy Bonner
Francis and Margaret Bowles
 John and Jane Bradley
 Eric Braitmayer
 John and Nancy Braitmayer †
James Breed
Jacob and Barbara Brown
 Thomas Brown
 Wendell and Leslie Brown
 Lawrence and Sally Brownell †
 Lexie Bullard and Kevin Kump †
 Sarah Bullard †
 Andrew and Amy Burnes
Rick and Nonnie Burnes
 Mrs. Carleton Burr †
 Toby and Barbie Burr
 James and Rosamond Butler
Ned and Betsy Cabot
 Edwin and Crystal Campbell †
 John and Roberta Carey
 Ernest and Lynne Chadderton
Morris and Cynthia Cheston
 Frederick Christian
 David and Betsy Clark
James and Ruth Clark
Carol Cleave
Edith Corning
John and Laura Crosby
 Benjamin Cuker and Dawn Gerbing
 Mrs. William Curby and
 Matthew Taylor Curby
Barry Dame
 Nelson and Ruth Darling
 Willis and Nancy Daugherty †
 John and Helen Davies †
 Leverett Davis
 Eric Dawicki
 Michael and Jane Deland †
 Robert Demere
 Edward and Charlene Dennen
Nicholas and Birgitte Dill
 Jeffrey Dorman
 Neal Driscoll and Cheryl Peach
 Patrick and Grace Duarte
 George and Pauline Duclos
 Joseph and Darlene Dupras
 Paul and Rita Dussault
 Timothy Dyer †
 Sylvia Earle

James and Nancy Edwards †
 John and Janice English
 John and Shirley Farrington †
 David and Doris Fausch
 Peter and Alison Fenn
 Judith Fenwick
 Armand Fernandes
 Douglas Fischer and Robert Haines †
Edwin and Angela Fischer
Dielle Fleischmann
 David and Mary Flinn
 Ralph and Erika Forbes †
Robert and Patricia Foulke
 Clayton Fowler
 Stuart Frank and Mary Malloy †
 Robert and Alexena Frazee †
 Mary Freeman
Ruth Fye
 Robert and Susan Gagolian †
 Michael and Mary Garfield
 Seth Gelsthorpe
 Christian Giardina and
 Ingrid Dockersmith †
 Craig and Nancy Gibson †
 Robert and Francesca Giegengack
 Richard and Joy Gilbert
 Terry Glenn
 Jonathan and Dorothy Goldweitz
 Mark Goldweitz
 Guillermo Gonzalez
 John and Marilyn Gould †
 William Grant †
Virginia Gray
 Henry and Nina Griswold
J. Robert and Teresa Gunther
 Kenneth Haines
Julia Hall
Jane Hallowell
Robert Hassey and Susan Bozek
 R. William and Dawn Hazelett
 Elizabeth Heald †
 Jerome and Anne Heller
 Carl Herzog and Laurie Weitzen
 Andrew and Susan Hess
 Robert and Janet Hewes
 Alan Hickey
 Grace Hinkley †
 Franklin and Linda Hobbs
 Edward Holland †
 Timothy Horkings and
 Margaret McGetrick
Paul and Betsey Horovitz
 Charles Hovey
 Lance Howland and Anne Matera
 Michael and Hope Hudner †
Gordon and Elizabeth Hughes
 James Hughes and Bess Dawson †
 Peter and Mary Huidekoper †
 Melville Ireland
 Arne and Gail Isaksen
 Irving and Annette Itzkan
David and Nancy Jackson
 Mary Janney
 Ambrose and Anna Jearld †
George and Margaret Jenkins
 George Johnson †
 Howland and Betsy Jones †
 Royal Joslin
 Robert and Susan Karam †
 Donald and Anne Keel
 Wayne and Barbara Keith †
Morris and Elizabeth Kellogg
Edmund and Mayotta Kendrick
 William and Priscilla Kennedy
 Richard and Reta King

John and Louise Kingsbury
William and Deborah Knowlton
 Gus and Liza Koven †
 Gustav and Stephanie Koven
 Tom and Willa Kuh
 G. Lawrence and Emily Langford
 Robert and Patricia Lawrence †
 Michael Lesser †
 Adolfo and Corinne Leung
 George and Emily Lewis
Barbara Littlefield
 Stanley and Martha Livingston
 Per and Margaret Lofberg
George Lohmann and Susan Humphris
 Ellie Linen Low and David Low
 Philip and M. Susan Lozier †
 Diana Lucas †
Peter and Deborah Luquer
 Cabot and Heidi Lyman
 Jean MacCormack
 Martin and Anne Madden †
John and Linda Maguire
 Bruce Mallory
 Clinton Marshall
Nelson and Grace Marshall
 Joseph and Beth Mattison
 Dorothy McAuliffe †
 John and Elizabeth McBratney
 R. Gordon and Judy McGovern †
 Philip and Kathy McKnight
Don and Barbara McLucas
 Peter and Kathleen McNaul †
 James and Helen McNitt
 Richard McWethy
Robert and Margaret McWethy
 Peter and Jenny Mello
 Richard and Katherine Mellon †
 Lew Meyer
 Edwin and Cassandra Milbury
 Anthony and Jen Miller
James Millinger and Charlotte Hatfield
 Raymond and Jeanne Minchak †
 Rob Moir
 Peter Moore and Alicia Hills-Moore †
 Bruce Morehead and Imelda Mehlert
Steven Morgan
 John and Bridget Morton
 Bernard and Jane Moulton
 D.E. and Marjorie Murray
 Douglas Nemeth †
Paul and Adelaide Nicholson
 David and Elizabeth Noyes †
 Philip and Jeannette Parish
Margaret Parker
 Ruth Parker †
 Herbert Parsons
 Edward and Joan Partridge †
 Robert Patterson and Jane Manipoli
Stuart and Martha Pattison
 Vernon and Dorothy Penner
 John Penney
Paul and Mary Perkins
 William and Migdalia Pinkney
 Laurie Pohl
George and Kathy Putnam
 Thomas Putnam
 Robert and Judith Quinlan †
 E. Leigh and Nancy Quinn †
 Donald and Rohlat Ramsbottom
 Julia Rankin
Abbott and Katharine Reeve
 Howard and Judith Reynolds
 Clare Rhoades †
 Robert and Patricia Ricks †
Peter and Lucy Robbins

Bryan Robertson and Patricia Garrahy-Robertson
Norman Robinson
 Elizabeth Roosevelt
 Edward and Wendy Rose
 Estate of Hilde Rosenthal
Edward and Susie Rowland
 Saul Sacks †
 Carl Safina
 Richard Sailor and Mary Johnston †
H. Alexander Salm
G. West and Victoria Saltonstall
William* and Jane Saltonstall
 Karl Schoettle
Mr. and Mrs. Charles Schutt
Gary and Elisabeth Schwarzman
Robert* and Eugenia Seamans
 Lari Sheehan
Ross and Kathleen Sherbrooke
 Gary and Amy Simon †
 Dean and Marjorie Smeltzer
 Jean Smith †
 Paul and Mary Louise Smith †
 Stanley and Josephine Smith
 Emily Smithgall
Frank and Jessie Snyder
 Jonathan Snyder
 Lionel and Vivian Spiro
 George and Theresa Stanley
Wallace and Pamela Stark
 Charles and Susan Stillman
 Clay and Clara Stites †
 Jacek and Margaret Sulanowski
 Craig Swatland
 John and Susan Taylor
 Stephen and M.E. Taylor †
 Donald and Shirley Ann Thomson †
 Cutler Umbach
 Joan Underwood
 William and Charlotte Underwood
 George and Dagmar Unhoch
 Scott Veirs and Annie Reese
Daniel Walker
Joan Ward
William and Mary Warden
 James and Elizabeth Waring
Deborah Warner
 Joseph Warren
 James Watters and Ashley Tobin
Richard and Anne Webb
 David Wechsler
 Joe and Anne Welch †
Thomas and Katrina Weschler
 Joan Wheeler †
 William and Jean Whelan
 Lawrence and Janie White
 William and Shelly White †
 Elizabeth Whitney
 James Wickersham †
 Susan Williams
Richard Wilson and Lesley Maxwell
 John Winchester †
 Mary Winder
 Elizabeth Winn
 Sears and Carolyn Winslow
 Alastair Wolman †
Eric and Sandra Wolman
 Lucy Wood
 Michelle Wood
 John and Margaret Xifaras
 Matthew Yanagi
 Anthony and Mary Zane †
 Edwin and Caroline Zimmerman †

ANNUAL FUND Faculty and Staff Donors

Jill Arthur †	Sally Hampton †	Mary Malloy †	Anna Stevens, S-201
Scott Branco	Kerry Hannigan †	Elizabeth Maloney, W-162	Stephen Tarrant
John Bullard †	Gary Jaroslow †	Philip Petrone, W-150	Glen Thomas
Dale Dean †	John Jensen	Maryanne Richards	Janet Wagner †
Mary Engels	Paul Joyce †	Erin Roach, C-192	Laurie Weitzen
Jane Frye	Kara Lavender Law †	Philip Sacks	Erik Zettler
Jennifer Haddock, C-109 †	Jeremy Law	Amy Siuda, C-142	

ANNUAL FUND Foundations and Corporations

Alcoa Foundation	GoodSearch	Pfizer, Inc.
The American Foundation Corporation	The Gravina Family Foundation, Inc.	The Procter & Gamble Fund
American International Group, Inc.	The Greater Cincinnati Foundation	Review Foundation
AXA Foundation	Houghton Mifflin Company	SAIC
B & H Ocean Carriers, Ltd.	IBM	SEA New England Regional Alumni Group
Bank of America	Ingersoll-Rand Charitable Foundation	Ann C. & C. Hamilton Sloan Foundation
The Bascom Family Trust	Kent-Lucas Foundation, Inc.	Starbucks
The Belsky-Doyle- Polikoff-Troubh Family Fund	Koven Foundation	Swergold Family Foundation
Boston Financial Data Services, Inc.	Lyman-Morse Boatbuilding Co., Inc.	Tidewater Research Foundation, Inc.
The Boston Foundation	Oscar G. & Elsa S. Mayer Family Foundation	TisBest Philanthropy
The Edmund & Betsy Cabot Charitable Foundation	MHG Foundation	TransUnion
Virginia Wellington Cabot Foundation	Microsoft	UBS
CIGNA	MMC	United States Coast Guard Auxiliary
Simon & Eve Colin Foundation, Inc.	The Monomoy Fund	R. T. Vanderbilt Trust
Colonial Oil Industries, Inc.	The J. P. Morgan Chase Foundation	Verizon Foundation
The Henry L. and Grace Doherty Charitable Foundation, Inc.	Morgan Stanley	The Walton Family Foundation, Inc.
Exxon Education Foundation	National Grid	Westvaco Foundation
Bob Fleigh Foundation, Inc.	Northeast Maritime Institute	Whitehall Foundation, Inc.
GE Foundation	Nutter, McClennen & Fish, LLP	The Wildwood Foundation
Glaxo Welcome, Inc.	The Pegasus Foundation	

ANNUAL FUND Restricted Gifts

Anonymous (6)	Ford and Jean Elsaesser	Timothy Mahoney and Pamela Donnelly
B & H Ocean Carriers, Ltd.	John Gerngross, W-20	Jerrold and Mary Ellen Manock
Bonnell Cove Foundation	Philip J. Hahn Foundation	Philip and Kathy McKnight
The Boston Foundation	Richard Hawkins and Marian Ferguson	James Millinger and Charlotte Hatfield
Rick and Nonnie Burnes	Kathleen Healy and Julian Day	Margaret Parker
Ned and Betsy Cabot	Michael and Hope Hudner	Christopher, W-06, and Diane, W-16, Penn
Virginia Wellington Cabot Foundation	Paul, W-01, and Christine Kaplan	Henry M. Rowan Family Foundation, Inc.
Thomas B. Clark, W-26	Patricia Keoughan, W-53	Carolyn Sheild, W-77
Jamie, W-14, and David Deming	H. F. (Gerry) Lenfest	Manning and Virginia Smith
Peter and Cynthia Ellis	The Lenfest Group	St. Francis Yacht Club Foundation

RESTRICTED GIFTS

ANN BREWER ENDOWED SCHOLARSHIP

Michael and Ann Taylor

CAMPUS IMPROVEMENT FUND

Alexander, W-53, and Janet Politis

ENDOWED SCHOLARSHIP FUND

Margaret Clowes
Grimshaw-Gudewicz Charitable Foundation

GENERAL ENDOWMENT

Ned and Betsy Cabot
Margaret Parker

MELVILLE IRELAND ENDOWED SCHOLARSHIP

The Kate Ireland Foundation

EXY JOHNSON ENDOWED SCHOLARSHIP

Robert and Elizabeth Johnson

NEW HORIZONS CAPITAL CAMPAIGN

J. Scott and Mayke Briggs
William, W-35, and Deborah Duggan
Eric Swergold, C-102, and Dawn Dobras

OCEAN AND CLIMATE ENDOWMENT

The Horner Education Trust
Eric and Sandra Wolman

JOHN C. PARKER ENDOWED SCHOLARSHIP

Margaret Parker
Vision Fund of the Triangle Community Foundation

RAFE AND KATE PARKER ENDOWMENT FUND

Hartford Foundation for Public Giving
Lucy Lommis, W-18, and Thomas Creighton

WALLACE E. TOBIN AWARD

Ashley Tobin and James Watters

On all pages, **bold** type indicates donors who have contributed for at least 10 consecutive years.

† Indicates donors who have contributed for at least 5 consecutive years.

GIFTS IN HONOR (all funds and campaigns)

In honor of Class S-215

John and Bridget Morton

In honor of Claudia Endler and Renwick Oden

Samuel Goldstein and Elizabeth Oakes

In honor of Emily M. Harwood, S-190

Robert and Karolyn Harwood

In honor of Hannah J. Parker, C-106

Mary Jackson

In honor of Rafe and Kate Parker

Hartford Foundation for Public Giving
Lucy Loomis, W-18, and Thomas Creighton
Margaret Parker

In honor of John Peabody, S-177

Edith Edson

In honor of Francisco Segar

Simon & Eve Colin Foundation, Inc.
Fred and Barbara Colin

In honor of Ian T. Smithgall, S-209

Emily Smithgall

In honor of Laura A. Sudarsky, W-35

Dorothy Lappin

GIFTS IN MEMORY (all funds and campaigns)

In memory of Jacob C. Bedard

Peter, W-140A, and Kismet Bertash

In memory of Margaret L. Bradley, C-167

Gina Coggio, C-167

In memory of Ann W. Brewer

John and Jane Bradley
Michael and Ann Taylor

In memory of John J. Dupras

Joseph and Darlene Dupras

In memory of Edward W. Farrell

Barbara Jones

In memory of Mitchell Gibbons-Neff, Jr.

Elizabeth Bergener

In memory of Caroline M. Granger, C-134

Thomas and Joan Granger

In memory of Phillips Hallowell

Jane Hallowell

In memory of John Hazelton

Carole and Bill Kennedy

In memory of Melville H. Ireland

The Kate Ireland Foundation

In memory of Irving M. Johnson

The American Foundation Corporation
Edith Corning

In memory of Jock Kiley

Joan and Edward Partridge
Peter and Lucy Robbins

In memory of Carol L. Klumpp, W-83

Elmer and Marilyn Klumpp

In memory of Charles McClennen

Robert and Karolyn Harwood

In memory of Robert C. Seamans, Jr.

Janet Wagner

In memory of Roderick Stephens, Jr.

Lew Meyer

In memory of Wallace E. Tobin, III

Michael and Ann Taylor
Ashley Tobin and James Watters

GIFTS IN KIND (all funds and campaigns)

Anonymous
B & H Ocean Carriers, Ltd.
Séan Bercaw
Kalmia Buels, S-179
Rick and Nonnie Burnes

Ned and Betsy Cabot
Scott Doney, W-76, and Andrea Gosselin
Erik Gura
Michael and Hope Hudner
Ambrose and Anna Jearld

Grant Macdonald, W-122
Peter and Arlene Mollo
Pie in the Sky
Saltchuk Resources, Inc.

Allan, W-86, and Nancy Salzman
Janet Wagner
Craig Wiegand

SeaPerch Project

The SeaPerch project came full circle when students and teachers from the Taiohae Middle School in Nuku Hiva toured the *Robert C. Seamans* during a Class 216



port stop at the Marquesas (below).

The project began in Woods Hole during the shore component of Class 215 when SEA Semester students (left) voluntarily undertook building two SeaPerches in their spare time. They were

tested in Woods Hole, and then went to sea. A SeaPerch is a hand built ROV (remote operated vehicle), a submarine that is controlled from the surface.

One was donated during Class 215's stop in Nuku Hiva to students from the same school who toured during Class 216. Other SeaPerch ROV's have been similarly built by SEA students and donated to a marine lab in Jamaica, and ECO-Mar, a non-profit that serves fishing villages in Samana Bay, the Dominican Republic.



More Legacy Students

The number of SEA Semester students who are legacies continues to grow. In Class 221, Erin "Ginger" O'Reilly (top, left), daughter of Patrick O'Reilly, W-76 and Sarah Kearsley (top, right), daughter of Richard Kearsley, W-25, were classmates and are shipmates on the *SSV Robert C. Seamans*. Class 222 included student, Ben Sinnett (below), son of Emily Bramhall, W-27.



Annual Fund

SEA's Annual Fund appeal will close on June 30 for the 2008-2009 year. The Annual Fund is the cornerstone of SEA's fundraising and annual giving provides for 15% of the operating budget. Since endowment income is greatly reduced in the current market, and college students are struggling with the cost of education, SEA's need for support is greater than ever. Annual Fund gifts go to scholarship, program enrichment and maintenance of our vessels.

The alumni reunion class with the greatest percentage of participation will win the opportunity to go on an overnight sail on Alumni Reunion weekend.

Please consider making a donation by returning the remittance envelope contained in this mailing. Remember that our Annual Fund year runs from July 1st to June 30th. A gift of any size will be greatly appreciated.

Jan Witting Receives 2008 Elsaesser Fellowship Award

Dr. Jan Witting's project was selected from a pool of strong proposals for the 2008 Armin E. Elsaesser III Fellowship Award. Jan has been a member of SEA's Oceanography Faculty since 2001. He received both his BS and PhD in Marine Biology from Northeastern University.

Jan's project involves the traditional inshore fishery techniques that are rapidly disappearing in the Tuamotu Archipelago in French Polynesia. He is studying the vanishing traditions that present a sustainable model for exploiting local marine resources and are in urgent need of preservation. Traveling to three of the atoll islands, he will document this tradition using video, audio recordings, photographs and written records. These records will then be shared with local community organizations involved in preserving traditional landscape use methods. To follow Jan's progress on this project, go to <http://www.oceanna-tion.blogspot.com/>

SEA Overseer Ben Cuker Wins Award

The first 'Excellence in Education' Award has been presented to Dr. Benjamin Cuker by the American Society of Limnology and Oceanography (ASLO). Since 1988, Dr. Cuker has served on the faculty of the Department of Marine and Environmental Science at Hampton University. Beyond his duties as a professor and researcher, he has devoted much of his career to promoting diversity in the aquatic sciences. In congratulating Ben, SEA's President John Bullard said, "Your commitment, your imagination and your persistence have overcome all the obstacles that efforts to diversify the sciences encounter."

SEA in Antarctica

Three colleagues with SEA connections joined Former Director of Marine Operations, Al Hickey, on an expedition in Antarctica last fall. This photo was taken from the deck of the *Laurence M. Gould* after motoring into Lapyrere Bay to trawl the bottom for Antarctic ice fish. Al writes that it was a gorgeous winter day that finally saw the sunshine in a temperature of -6°C.

*Pictured L-R: Jullie Jackson, W-169, Engineer
Jeremy Lucke, Al Hickey, Lindsey Ekern, S-183*



crossing paths

W-1

WESTWARD

WESTWARD (W-1) Galapagos Islands, February 1972 By Captain Sean S. Bercaw

Note: When I was ten years old I sailed around the world with my family on NATASHA, our 38-foot ketch. In February 1972 during our circumnavigation, we crossed paths with the WESTWARD in James Bay, Galapagos Islands. She was on W-1, her first SEA voyage. The following is an excerpt from my log regarding that event; I've left my original spelling and grammar.

The Westward had come in at 0600. The Westward is a sister ship of the Yankee. She's a Topsail schooner, 100 feet long. Just before we were going to leave a 16 foot whaler came by. A man in it said for us to come over. They use a 9 foot Avon to land. We saw them flip it. So we went over. When we got aboard it was lunch time. The Captain invited us for lunch. We had bread, Potateo salad, and Cold MEATLOAF. Boy, that was good. The boys didn't respect there captain or us. The didn't have shirts on ether (*note: a family rule of ours was to have shirts on at meals*). The Captain is Roger Gray and his wife is Frances Gray. Frances Gray gave us six Whole Canned Chickens. O boy.

The Westward. She had a break in her deck ¾ of the way aft. Nice engine room. Her yard was on deck. 46 feet long. They put it up in James Bay. Almost no doors have handels. They have a key. Lot of doors have keys sitting in them. There's a watertight door with a key hole. The one thing I didn't understand are the watches. There is seven people on a watch. They stand watch day and night, port or sea. They stand four hour watches. In 11 days they saw the Galapagos. The people on watch don't get to sea that port.

Daddy was interested in it because of the (*Brigantine*) Yankee. The builder talked to daddy about certain things. It was the first time daddy had been aboard. After we got back a boat from the Westward came by. We invited them aboard. Jeff Davis and Larry J. Hobbs. Larry was a mate and got paid. Jeff had to pay. Larry has had lots of experiences. His address is Waimanalo, Hawaii. He was neat. That night the Perrine kids and Bercaw kids went to the Westward. We had cold strong Kool-Aid.

The next morning we were going to have pig liver. But when we smelled it, it had already spoiled. The pigs heart still was good. We had pigs heart. It was just like liver except firmer. We had dinner that afternoon; Pork and Sweet & Sour sauce, carrots and rice. Trina, Mommy and me took a hike. We were planning to hike to Buccaner Cove. We got pictures of the Westward and started hiking. We hiked, hiked, and double hiked. Finally we got on the left side of a big hill. Wrong side.

After supper Daddy showed his Yankee lectiour on the Westward. The French, Perrines, Bercaws and Four Winds people. Four Winds is a 60 foot schooner. The people on it are making a movie. Daddy showed it with there (*the WW's*) projector from the capanion way. We had to take all the slides from the cardtriges and put them in order in a big box. He made a very good lecture. He added two pictures of Natasha. Bravo! We had cold Kool-Aid afterwards. ■

Sean Bercaw served as Captain on the SEA faculty from 1994 to 2003. This story is a followup to "Message in a Bottle" (Following SEA, Winter/Spring 2008). During 1972, when sailing around the world with his family, he encountered Westward on its first SEA cruise.

TIME	TEMP	WIND	SEA	REMARKS
2250				
9 FEB				
10 FEB				
0200				
0220				
0300	229	175	175	29.88 calm calm
0315	230	142	175	
0330	231			
0347	234	142	142	
0400	235			
0500	243	142	29.86	calm
0600	249	142	29.80	S.W./2
0610		146	29.93	"
0618	257			"
0640				"
0700				"
0730				"
1445				"

At James Bay, San Salvador Is. (James Is.)

Golden Catch Lot "noted 150 yds. 185°C, 190"

Jay + Hutchison Bercaw Ketch Natasha

San Juan, Delphin Furino "Neue Bercaw"

Strong burst of light 222°C 3 miles

400 weigh to & head for Pinzon Is.

500 course... 1/2 mi. off James

600 Cabo Nepean then south to

800 LOG STREAMED 142°C, FOR PINZON

800 ABEAM OF C. NEPEAN, 1/2 mi OFF

640 SHOWED FOR DAYLIGHT ARRIVAL.

CONSTING PINZON IS.

LOG ABOARD

DRIFTING OFF PINZON IS.

Coasting off Pinzon Is.

Shore party landed on Pinzon Is.

fell while climbing up from landings. Returned

To WESTWARD and seen up by Dr. Brantley

Shore party back on board. Depart

LH

LH

R.G.

R.G.

R.G.

PTK

RCS

B.M.F.

R.G.

RCS

R.G.

R.A.



(Above) A page from Westward's log that notes the visit of the Bercaw family and a photograph of Westward at anchor in James Bay in the Galapagos, taken by Sean's father, Jay Bercaw.

There was a second crossing of paths for W-1 alumna Cheryl McKinley and former SEA Captain Sean Bercaw in August of 2008. During an Alumni and Parent Cruise onboard the SSV *Robert C. Seamans*. Sean and Cheryl realized that their paths had also crossed 36 years earlier during the voyage of SEA's first class on RV *Westward*.

Cheryl was one of the 15 student apprentices setting sail on January 6, 1972 from San Diego on what was described in the June 1972 issue of *SAIL* magazine as "her first of a continuing series of oceanographic expeditions to remote places around the world." The voyage was to take them to the volcanic island Socorro, off the coast of Mexico, on to the Galapagos Islands for an extended stop, through the Panama Canal and on to Puerto Rico.

Cheryl's return visit to the Galapagos Islands in 2007 had led her to reconnect with SEA and then sign up for the S-218D alumni sail. By chance Sean had been recruited by SEA to sail as a Mate on that same trip and ended up on the same watch as Cheryl.

As a boy, Sean had been sailing round the world on his family's ketch, *Natasha*, when *Westward* was sighted at anchor in the Galapagos. Although Sean's father Jay had never seen the boat, he had been consulted on its construction by Drayton Cochran, *Westward's* original owner, and thus recognized it right away. Cheryl remembered the Bercaw family's visit to the vessel, especially the slide show of the 5th voyage of the Brigantine *Yankee* that was viewed on deck by the apprentices. Jay had been Mate on both the 5th and 6th world voyages on the *Yankee*.

Asked about comparisons in what she experienced on the *Seamans* versus her W-1 trip, Cheryl responds that the pace is very familiar; watch standing, camaraderie and teamwork are also similar. The grace and elegance of the ship was the same. "There seems to be a bit greater emphasis on science today as compared to more seamanship in 1972," she said. The same 1972 *SAIL* magazine article though, describes W-1 off watch activity as "lectures on a broad spectrum of subjects including ocean currents, water systems, sea water physics and chemistry, bottom topography, plankton life, cetacean physiology and behavior, marine ecological systems, navigation, meteorology and sailing theory." ■

WHOI/SEA joint coring expedition to Society Islands, French Polynesia

By Jan Witting, PhD, Chief Scientist onboard the *Robert C. Seamans*, WHOI@SEA

January 2009

Do increasing global temperatures have an effect on the intensity and frequency of extreme weather events? For coastal communities, the relationship between global warming and cyclone activity is particularly interesting for reasons that are altogether obvious. This is the question that recently brought WHOI scientist Dr. Jeff Donnelly to the Society Islands, French Polynesia on board the SSV *Robert C. Seamans*. The mission of the ten-day research cruise was to map and sample the soft sediment deposits of the lagoon environments of Tahaa, Bora Bora and Huahine.

These sediments potentially preserve a detailed weather record all through to the end of the last ice age some 10,000 years ago. The sediment is an aggregation of weathering products running down from the volcanic peaks of the islands, and calcium carbonate produced by invertebrates and algae on the surrounding coral reefs.

WHOI science party on board the Robert C. Seamans (l-r). Grad. Student Phil Lane, Drs. Jonathan Woodruff, Andrew Ashton, Jeff Donnelly, Andrea Hawkes and grad student Michael Toomey.



The basic idea behind this research effort is that large storm events will generate sediment and debris that is discernibly different from the usual gradual accumulation. On the reef side, the large seas break large corals off the reef and roll them around. The resulting mixture of coral sand and shell fragments is then washed over the reef and deposited in the lagoon. On the land side the large rainfall accelerates erosion and moves larger particles down the steep inclines and swollen rivers. After the storm is over, the usual gradual sedimentation process proceeds and eventually buries the evidence of the storm. Repeat this process for thousands of years, and you potentially have a very nice record of major storms locked in the lagoon sediments.

Dr. Donnelly and his science party of six boarded the ship in Papeete on the 10th of January. The cruise had been in the planning for about a year, and much of the research gear had been loaded on the ship in San Diego before the two fall sea semesters. After departing Papeete in the afternoon of January 10, we traveled some 115 nautical miles to the twin islands of Raiatea and Tahaa where we spent the next five days. A routine for the work quickly established itself, with the mornings and early afternoons filled with acoustic CHIRP sonar surveys of the lagoon sediments, followed in the afternoon by a few core samples of selected locations.

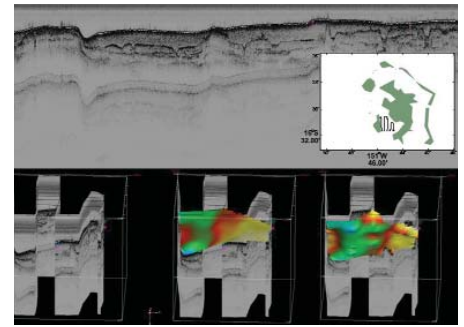
The full results of the research will trickle in once Dr. Donnelly's group has had a chance to analyze the cores back at WHOI, but the early indicators are very promising. Dr. John Woodruff from UMass Amherst created 3-D maps of the coring locations from the detailed CHIRP data produced as *Seamans* was "mowing the lawn" in a crisscross pattern around the core sites. These maps show multiple layers deep beneath the present day seafloor, and with the help of one 4m long core sample Dr. Andrea Hawkes (a Post-Doc from WHOI) was able to determine that one of the most prominent layers was the exposed ground during the last ice age. Above this layer, a quick look at some of the cores showed evidence of shallower layers of coarser sediments that seem indicative of storm events. So both the acoustic data and the core samples have been very promising.

Our next target was Bora Bora, and after two busy days there we traveled to Maroe Bay in Huahine, where we have just spent a productive day conducting another acoustic survey and collecting core samples. Tomorrow we'll head back for Tahiti after trying to collect a final 5.5m long core using an extended tube welded together today. From Papeete some of the cores will be shipped directly to WHOI, others will detour with the *Seamans* to Hawaii and will reach the lab later in the spring.

At WHOI in Dr. Donnelly's lab, a host of detailed lab analyses will examine aspects of the elemental composition of the cores millimeter by millimeter, helping to identify certain events in time that have left an identifiable marker in the sediment record. Isotopes from the atmospheric nuclear testing, for example, can be used to date layers from the 1950's. Other methods will include carbon dating, grain size analysis and pollen and foraminiferan microfossil analysis. From all this Dr. Donnelly hopes to reconstruct a detailed, dated record of cyclone strikes in these islands for the past 4,000 or so years. Given that the Pacific cyclone frequency is closely tied to El Niño, this research may provide new information of El Niño occurrence as well. One of the graduate students on board, Michael Toomey (alumnus of SEA WHOI/MIT 2008 program) will use the collected data for much of his PhD thesis work in the coming years.

So it has been a very successful research cruise. With no students, the life led on board took an a little different working rhythm for us. For the deck crew led by Capt. Phil Sacks, the acoustic surveys meant busy days of precise piloting in the very close quarters between the reefs and the islands while stopping for coring presented plenty of exercise in anchoring. As for the science crew, we were very busy helping to develop deployment methods for the vibrocorer from the *Seamans*, something new to us and the boat. Running the ship's gear during deployments was our routine, while after the first couple of days introduction to our CHIRP system the WHOI crew was able to take over the daily lab operations for the acoustic surveys.

Overall, it was a very positive collaboration. Summarizing it like this of course misses much of the experience, the sights we were treated to by the various islands, the balmy weather, the meals.... Personally one of the most rewarding parts of this cruise has been the working community on board. We had one lab and six deck volunteers whose help was instrumental and who, with the WHOI science party and regular crew made this a successful, fun cruise. Don't be surprised to read more about similar work in the future! ■

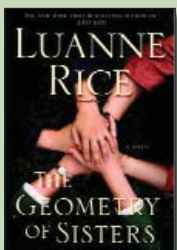


Some results from a CHIRP survey of Bora Bora. The small map on top right shows the island and the route of the ship, while the gray trace on top shows in a linear form the bottom and sub-bottom profile for the whole ship track. The three images on the bottom show the bottom trace convolved to the shape of the ship track (left), the interpolated bottom contour of the lagoon bottom today (center), and the lagoon bottom as it appeared some 10,000 years ago. You can see the outline of this ancient seafloor as the first dark line below the surface of the bottom sediments, which appear as the darkest band in the CHIRP trace. Note also that you can see multiple more outlines deeper down in the sediment, evidence that with long enough core it would be possible to sample much older sediments reflecting deposition that occurred tens of thousands of years ago.

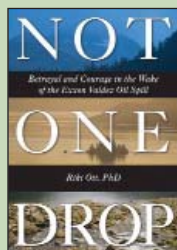


Vibrocorer recovery with the 3.5 m core barrel. Drs. Jonathan Woodruff, Andrew Ashton, Jeff Donnelly, and Andrea Hawkes (l-r) are preparing to detach the core tube from the vibrocorer head and bring it onboard. You can see how deep the core penetrated from the line of sediment on the outside of the steel core.

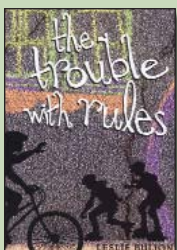
OUR FAVORITE **TITLES** published by SEA Authors



The Geometry of Sisters
Luanne Rice
W-25



Not One Drop
Riki Ott, PhD
W-19



The Trouble With Rules
Leslie Bulion
W-35



The Wandering Heart
Mary Malloy, PhD
Maritime Studies Faculty

We welcome any information on books published by SEA authors.

Alumni Reunion 2009

June 19-20, 2009

Members of Classes 13-18, 44-49, 74-79, 104-109, 131-136, 161-166, 191-196 and all young alumni (197 through the current class), are invited back to campus in Woods Hole for the 2009 SEA Alumni Reunion. Others who will be in the area are also invited to join fellow alumni, faculty, staff and crew in Woods Hole for Alumni Reunion.

A Reunion Committee has been formed to help plan the reunion and work with us to assure that the event is expense neutral for SEA this year. Please contact Laurie Weitzen at lweitzen@sea.edu if you would like to help or need further information. An Evite invitation will go out in April, and the SEA website will have the most current information.

In Their Own Words

SEA had a tremendous influence on me, including my choice to work with entrepreneurial teams to change the world. To this day, I think about shipboard life as one of the best models of how people accomplish great things in small teams. SEA Semester is the most extraordinary educational experience imaginable, and I look forward to the day when my children are in college and can experience it for themselves. —**Steven K. Gold, M.D., W-88**



Following **SEA**

Winter/Spring 2009

Sea Education Association, Inc.
P.O. Box 6
Woods Hole, Massachusetts 02543
Celebrating over 1,000,000 miles sailed

Non-Profit Org.
U.S. Postage
PAID
Sea Education
Association